

# Rittal – The System.

Faster – better – everywhere.



## SK 3240.800 Blue e+ filter fan

State: 2026.6.13 (Source: rittal.com/lt-en)

ENCLOSURES

POWER DISTRIBUTION

CLIMATE CONTROL

IT INFRASTRUCTURE

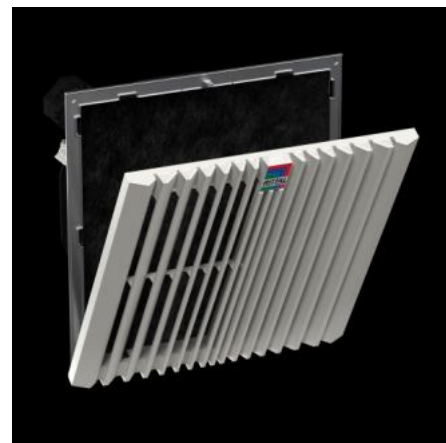
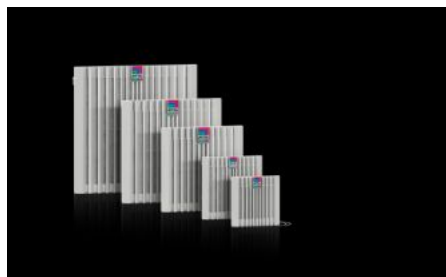
SOFTWARE & SERVICES

FRIEDHELM LOH GROUP



# SK 3240.800 - Blue e+ filter fan EMC

Complete fan unit with EMC shielding for tool-free mounting on surfaces. Air throughput from 20 – 900 m<sup>3</sup>/h



## Features

Model No.	SK 3240.800
Design	wall-mounted EMC
Product description	EMC fan-and-filter units offer a high shielding/attenuation effect and meet requirement category 2 to EN 61587-3.
Benefits	Easy filter changes, thanks to a new opening mechanism on the louvred grille Faster installation on the enclosure with optimised detent hooks Diagonal fan technology achieves more even and constant ventilation of the enclosure, thanks to improved pressure stability Tool-free assembly
Material	Plastic
Colour	RAL 7035
Supply includes	Complete unit ready to install, including EMC filter mat
Fan	Diagonal, shaded pole motor
Air throughput, unimpeded airflow (with chopped-fibre filter)	At 50 Hz: 175 m <sup>3</sup> /h At 60 Hz: 157 m <sup>3</sup> /h

# Features

Air throughput with matching outlet filter including chopped-fibre filter	At 50 Hz: 130 m <sup>3</sup> /h At 60 Hz: 112 m <sup>3</sup> /h
Rated operating voltage	230 V, 1~, 50 Hz/60 Hz
Power consumption Pel	At 50 Hz: 33.1 W At 60 Hz: 37.3 W
Rated current max.	At 50 Hz: 0.2 A At 60 Hz: 0.21 A
Dimensions	Width: 255 mm Height: 255 mm Depth: 129 mm
Installation depth	108 mm
Mounting cut-out	Cut-out width: 224 mm Cut-out height: 224 mm
IP protection category to IEC 60529	IP 54 with chopped-fibre filter IP 56 with chopped-fibre filter and hose-proof hood
Protection category NEMA	Type 12 with chopped-fibre filter Type 3, 3R, 4, 4X with chopped-fibre filter and hose-proof hood
Pre-fuse	Miniature circuit-breaker/fuse: 2 A
Note	To improve energy efficiency and extend the service life of the devices, we recommend the use of thermostats or temperature displays
Operating temperature range	-30 °C...55 °C
Storage temperature range	-30 °C...70 °C
Noise level	At 50 Hz: 48 dB(A) At 60 Hz: 45 dB(A)
Packs of	1 pc(s).
Net weight	2.16 kg
Gross weight	2.362 kg
Customs tariff number	84145915
ETIM 9	EC000320

# Features

---

ETIM 8	EC000320
ECLASS 8.0	27180716
Product description	SK Blue e+ fan-and-filter unit, EMC, 175/157 m <sup>3</sup> /h, 230 V, 1~, 50 Hz/60 Hz, WxHxD 255 x 255 x 129 mm, RAL 7035

---

# Approvals

---

Approvals	CSA 30 - KC Korea UL + C-UL - FTTA UR + C-UR (recognized)
Explanations	Declaration of conformity

---