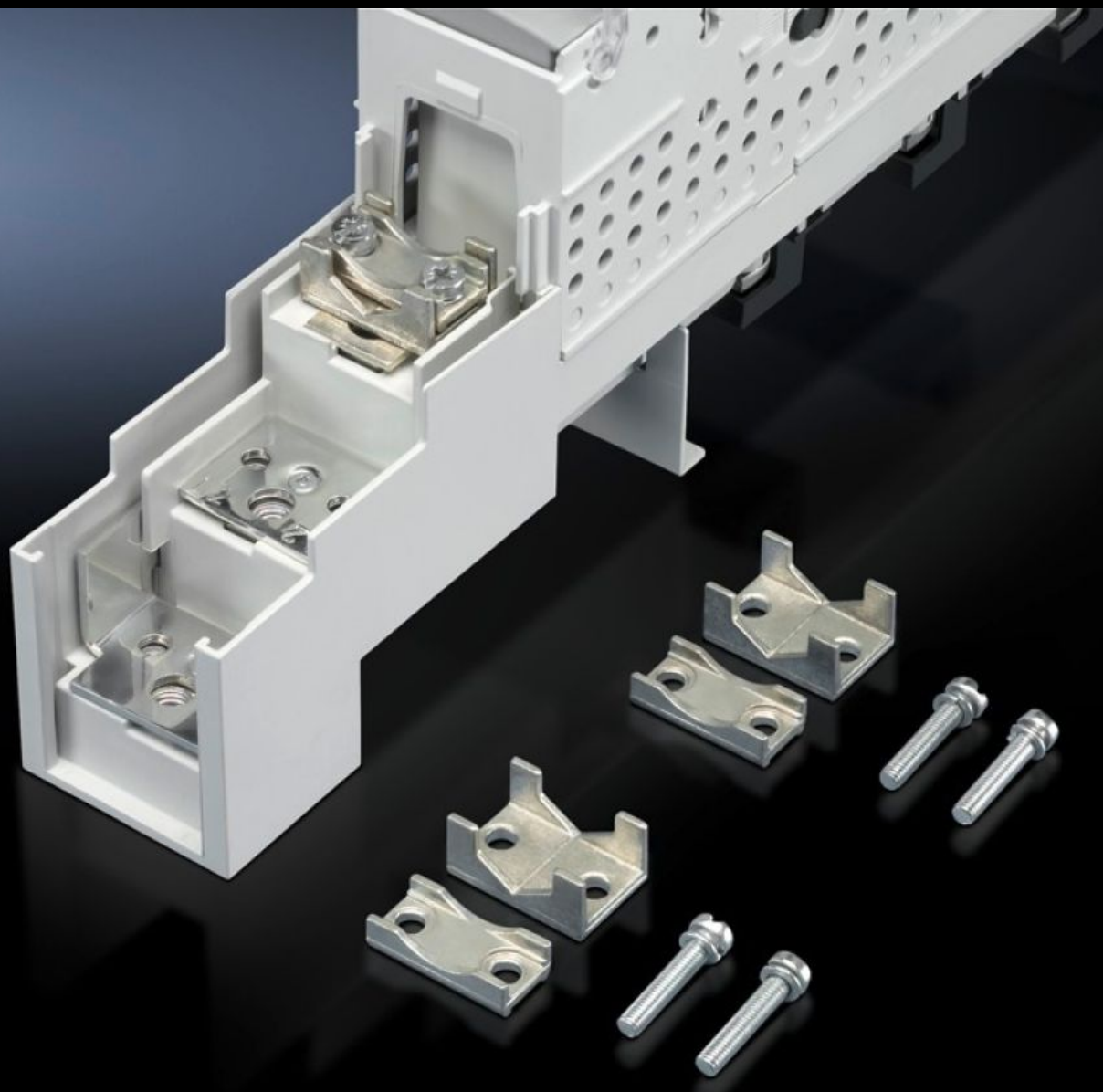


# Rittal – The System.

Faster – better – everywhere.



## SV 3592.010

## Clamp-type terminal connection

State: 2026.1.2 (Source: [rittal.com/lt-en](http://rittal.com/lt-en))

ENCLOSURES

POWER DISTRIBUTION

CLIMATE CONTROL

IT INFRASTRUCTURE

SOFTWARE & SERVICES

FRIEDHELM LOH GROUP



# SV 3592.010 - Clamp-type terminal connection for NH slimline fuse-switch disconnectors

For NH slimline fuse-switch disconnectors size 00. For connecting round conductors.



## Features

Model No.	SV 3592.010
Product description	For the connection of round conductors. Suitable for NH slimline fuse-switch disconnectors with screw terminal.
Material	Cast brass
Surface finish	Nickel-plated
Connection of round conductors	1.5 - 95 mm <sup>2</sup>
Round conductor cross-section	1.5 - 95 mm <sup>2</sup>
Packs of	3 pc(s).
Net weight	0.12
Gross weight	0.151
Customs tariff number	85444290
EAN	4028177307261
ETIM 9	EC000001
ETIM 8	EC000001
ECLASS 8.0	27141146

# Tender text

Clamp-type terminal connection

For NH slimline fuse-switch-disconnectors 00.

For the connection of round conductors 1.5 to 95 mm<sup>2</sup>.

Tightening torque:

Terminal screw 4 Nm.