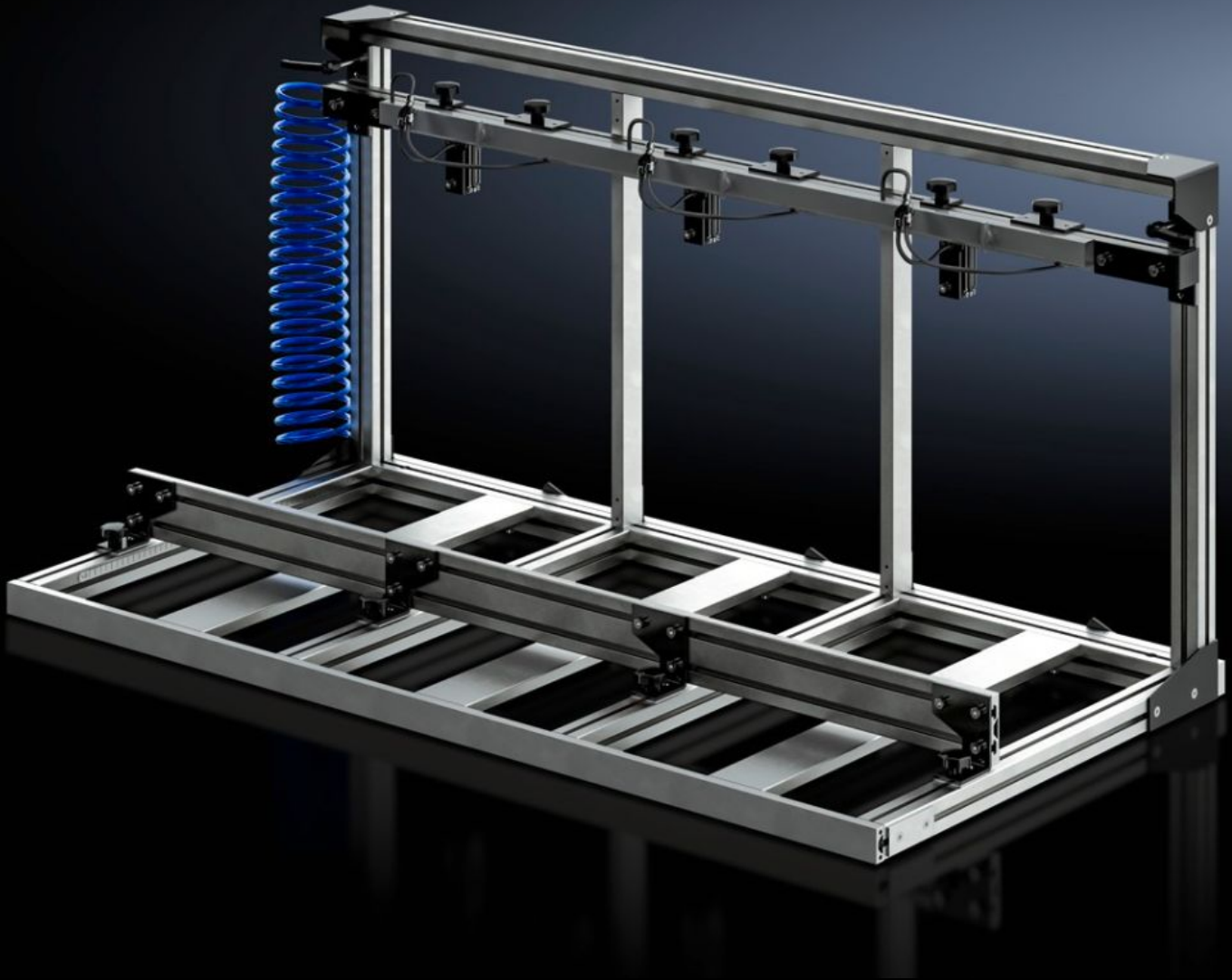


# Rittal – The System.

Faster – better – everywhere.



## AS 4050.060 Clamping frame

State: 2026.6.25 (Source: [rittal.com/lt-en](http://rittal.com/lt-en))

ENCLOSURES

POWER DISTRIBUTION

CLIMATE CONTROL

IT INFRASTRUCTURE

SOFTWARE & SERVICES

FRIEDHELM LOH GROUP



# AS 4050.060 - Clamping frame

Parallel machining of enclosures in the cube machining zone of Perforex machining centres BC and Perforex milling terminals MT for shorter setup times and enhanced productivity.

## Features

|   |  |
|---|--|
| Model No.   | AS 4050.060  |
| Design  | Pneumatic clamping device  |
| Product description                                       | Enables parallel cube machining of enclosures on Perforex machining centres BC and Perforex milling terminals MT.                          |
| Possible number of terminal Boxes for parallel processing | 3  |
| Note  | Use of the clamping frame (Model No. 4050.080) in the machining centre BC (Model No. 4050.230) is only possible with the two-door variant. |
| To fit Model No.  | 4050.101<br>4055.910<br>4055.911   |
| Suitable for  | Perforex BC 1001 HS<br>Perforex MT 1101<br>Perforex MT 1101 S  |
| Dimensions of clampable enclosures max.                   | Width: 200 mm<br>Height: 300 mm<br>Depth: 300 mm   |
| Dimensions of clampable enclosures min.                   | Width: 85 mm<br>Height: 70 mm<br>Depth: 70 mm  |
| Packs of  | 1 pc(s).   |
| Net weight  | 25 kg  |
| Gross weight  | 25 kg  |
| Customs tariff number                                     | 84669360   |
| ETIM 9  | EC003010   |

# Features

---

|                     |   |
|---------------------|---|
| ETIM 8              | EC003010  |
| ECLASS 8.0          | 36609190  |
| Product description | AS Multiple fastening, BC 1001, Clamping frame for several small enclosures, - 3 clamping positions in the frame, - Pneumatic clamping device, - Min. enclosure dimensions (W x H x D): 85 x 70 x 70 mm |

---