

Rittal – The System.

Faster – better – everywhere.



AS 4051.210

Wire Terminal WT C10 fully automated wire processing machine

State: 2025.7.27 (Source: rittal.com/lt-en)

ENCLOSURES

POWER DISTRIBUTION

CLIMATE CONTROL

IT INFRASTRUCTURE

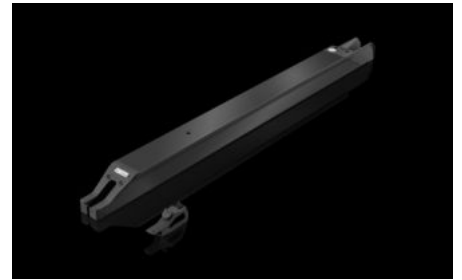
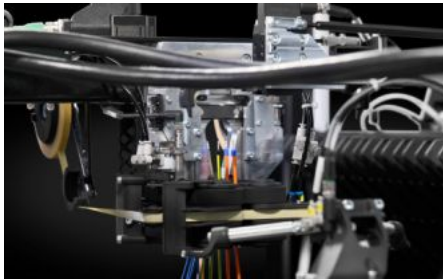
SOFTWARE & SERVICES

FRIEDHELM LOH GROUP



AS 4051.210 - Wire Terminal WT C10 fully automated wire processing machine

The Wire Terminal WT C10 fully automated wire processing machine produces up to 36 different wires fully automatically, with zero manual intervention. Wire ends with cross-sections ranging from 0.5 mm² to 6 mm² may be processed fully automatically without retooling. This includes length-cutting, insulation-stripping, crimping and project-specific labelling of the wires.



Features

Model No.	AS 4051.210
Design	For fully automatic processing of wire lists for wire assembly Suitable wire stores are selected depending on the number of wires

Features

Benefits

Fully interlinked, from the E-CAD tool through to the production processes

Continuous top quality

Investment amortisation period of 2.5 years from a minimum of 300 enclosures per annum

Machined wires from the ordering system or the chain bundle can be processed in the subsequent enclosure wiring process stage with the "Smart Wiring" tool from Eplan

Comprehensive process optimisation

Efficient job management via the RiPanel Processing Center is supported

Simple, fast changeover of consumable materials

Automatic labelling of the wires in black, white or light blue

Uses a new-technology crimper for various wire end ferrule lengths from 8-18 mm, including infinitely variable partial and full stripping.

Secure wire infeed via a new type of wire routing system including quick-lock mechanism

Wire output optionally as delivery, optional rail system or optional chain bundle

Make your wire assembly production process 10 times faster

Fully automated production of wire lists with cross-sections ranging from 0.5 mm²- 6.0 mm² without retooling

Simple operation with large 24" touch display

Allows you to respond quickly and flexibly to project changes

Error minimisation even in downstream processes

Features

Technical specifications	<p>Wire stripping range: Partial stripping 6 - 20 mm (0.24 - 0.79 in.), infinitely variable and full stripping 2 - 20 mm (0.8 - 0.79 inc.), infinitely variable</p> <p>Crimping range 0.5 mm²: Crimping length 8 mm (0.31 in.) and 10 mm (0.39 in.)</p> <p>Crimping range 0.75 mm²: Crimping length 8 mm (0.31 in.), 10 mm (0.39 in.) and 12 mm (0.47 in.)</p> <p>Crimping range 1 mm²: Crimping length 8 mm (0.31 in.), 10 mm (0.39 in.) and 12 mm (0.47 in.)</p> <p>Crimping range 1.5 mm²: Crimping length 8 mm (0.31 in.), 10 mm (0.39 in.), 12 mm (0.47 in.) und 18 mm (0.71 in.)</p> <p>Crimping range 2.5 mm²: Crimping length 8 mm (0.31 in.), 12 mm (0.47 in.) and 18 mm (0.71 in.)</p> <p>Crimping range 4 mm²: Crimping length 10 mm (0.39 in.), 12 mm (0.47 in.) and 18 mm (0.71 in.)</p> <p>Crimping range 6 mm²: Crimping length 12 mm (0.47 in.) and 18 mm (0.71 in.)</p> <p>Wires are fed in via separate wire infeed magazines</p> <p>Covering 12 wire types per block</p> <p>The Wire Terminal can accommodate a total of three wire infeed blocks for max. 36 wires</p> <p>10 wire end ferrule infeeds via feeder bowls</p> <p>The Wire Terminal WT C can process wire lengths from 150 mm to 10 m</p>
Supply includes	<p>Machine frame and encapsulation</p> <p>Operating unit</p> <p>Locator for wire labelling unit</p> <p>Label printer for wire rail magazine identification</p> <p>1 x WT 16 vibratory bowl feeder for 0.5 mm²</p> <p>3 x WT 20 vibratory bowl feeders for 0.75/1.0 mm²</p> <p>3 x WT 29 vibratory bowl feeders for 1.5/2.5 mm²</p> <p>3 x WT 43 vibratory bowl feeders for 4.0/6.0 mm²</p>
Machinable material	<p>Fine-wire copper cables to DIN VDE 0295 Category 5</p> <p>Wire end ferrules with plastic collar</p>

Features

Note	<p>Please talk to your Rittal sales consultant about a bespoke machine configuration.</p> <p>German and English are included as standard with the Wire Terminal</p> <p>The vibratory bowl feeders and the separation of single wire end ferrules are designed for the dimensional tolerances of Rittal wire end ferrules to DIN 46228-4:2019-02. If the wire end ferrules used exceed the defined dimension tolerances, it may be necessary to design/test a new bowl feeder and to adapt the wire end ferrule separation.</p> <p>We reserve the right to make technical modifications</p>
Machine options	<p>Printer option, light blue 4051.013</p> <p>Printer option, black 4051.029</p> <p>Printer option, white 4051.030</p> <p>Wire store WT Tube 12 (4051.218)</p> <p>WT wire store XL, central unit, 4051.037</p> <p>WT wire store XL, additional module, 4051.038</p> <p>Wire rail system WT 15 (4051.214)</p> <p>Wire feed block WT 12 (4051.213)</p> <p>Chain bundle module WT (4051.215)</p>
Interfaces	<p>EPLAN Pro Panel</p> <p>EPLAN Smart Wiring</p>
Safety	<p>The machine interior is fully encapsulated. The machine zone allows access from 4 sides, monitored via contactless safety limit switches on the bifold doors.</p>
Dimensions	<p>Width: 1,960 mm</p> <p>Height: 2,255 mm</p> <p>Depth: 2,255 mm</p>
Compressed air supply min.	5 bar
Compressed air supply max.	7 bar
Rated operating voltage	230 V, 1~, 50 Hz/60 Hz
Control voltage (DC)	24 V
Power consumption (approx.)	1 kW
Wires per hour approx.	260

Features

Support area including 3 wire magazine	Width: 3,660 mm Height: 2,250 mm Depth: 5,159 mm
Packs of	1 pc(s).
Net weight	1390
Gross weight	1740
Customs tariff number	84571090
EAN	4028177981218
ETIM 8	EC000000
ECLASS 8.0	18129090