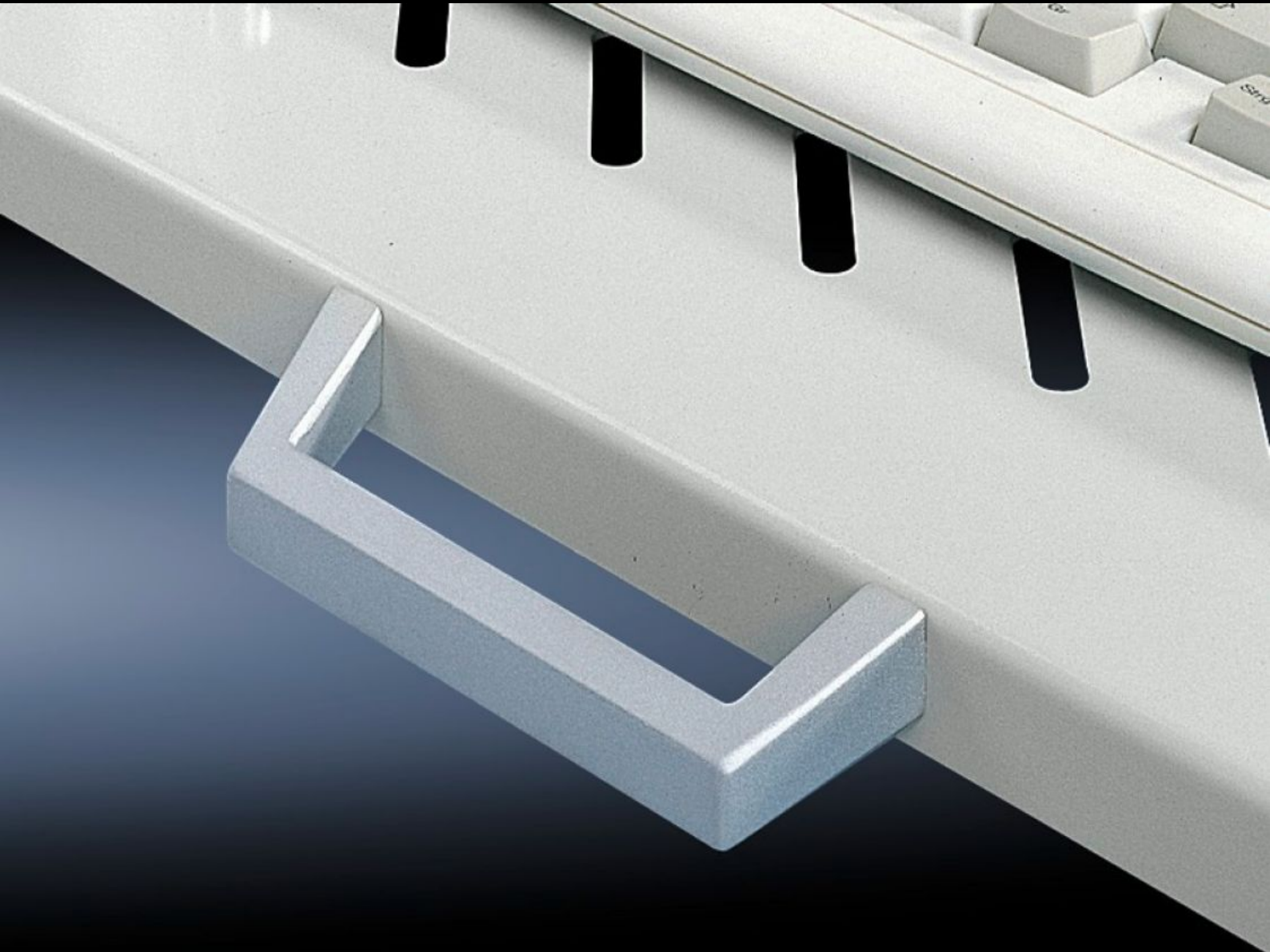


Rittal – The System.

Faster – better – everywhere.



DK 5501.730 Handles

State: 2025.5.20 (Source: rittal.com/lt-en)

ENCLOSURES

POWER DISTRIBUTION

CLIMATE CONTROL

IT INFRASTRUCTURE

SOFTWARE & SERVICES

FRIEDHELM LOH GROUP



DK 5501.730 - Handles for pull-out component shelves

Handles for ease of use with component shelves.

Features

| | |
|-----------------------|---|
| Model No. | DK 5501.730 |
| Product description | The component shelves are prepared for the attachment of handles. |
| Material | Die-cast zinc |
| Surface finish | Spray-finished, silver-grey |
| Supply includes | Assembly parts |
| Packs of | 2 pc(s). |
| Net weight | 0.176 |
| Gross weight | 0.197 |
| Customs tariff number | 83024110 |
| EAN | 4028177693814 |
| E-Number Sweden | E7282549 |
| ETIM 9 | EC002626 |
| ECLASS 8.0 | 27189266 |