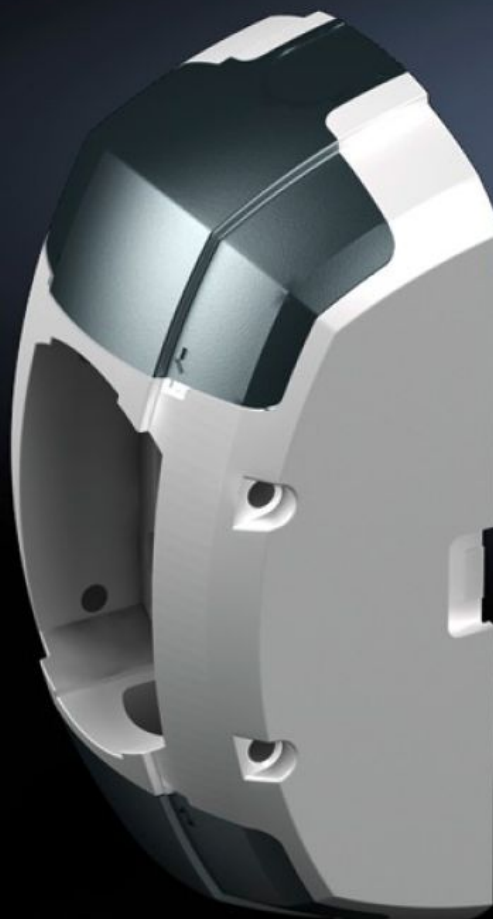
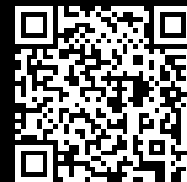


# Rittal – The System.

Faster – better – everywhere.



## CP 6212.800

## Wall/base mounting bracket CP 120, large

State: 2025.8.22 (Source: [rittal.com/lt-en](https://www.rittal.com/lt-en))

ENCLOSURES

POWER DISTRIBUTION

CLIMATE CONTROL

IT INFRASTRUCTURE

SOFTWARE & SERVICES

FRIEDHELM LOH GROUP



# CP 6212.800 - Wall/base mounting bracket CP 120, large

For stable attachment of the support arm system to vertical or horizontal surfaces.

## Features

|                       |   |
|-----------------------|---|
| Model No.             | CP 6212.800   |
| Product description   | For stable attachment of the support arm system to vertical or horizontal surfaces.   |
| Benefits              | Prepared for flexible cable entry and routing from all sides<br>Integral one-man assembly via machined keyhole<br>Optional anti-twist attachment on the mounting surface by pinning<br>Integral adjustment facility |
| Material              | Wall/base mounting bracket: Cast aluminium<br>Cover: Plastic  |
| Colour                | Wall/base mounting bracket, RAL 7035<br>Cover: RAL 7024   |
| Supply includes       | Seals<br>Grub screws<br>Adjusting screws<br>Self-tapping screws for support section attachment  |
| Rifid y/n             | Yes   |
| Packs of              | 1 pc(s).  |
| Net weight            | 2.652   |
| Gross weight          | 2.852   |
| Customs tariff number | 83024900  |
| EAN                   | 4028177684140   |
| ETIM 9                | EC000882  |
| ECLASS 8.0            | 27400556  |

# Approvals

---

Explanations

Manufacturer's declaration