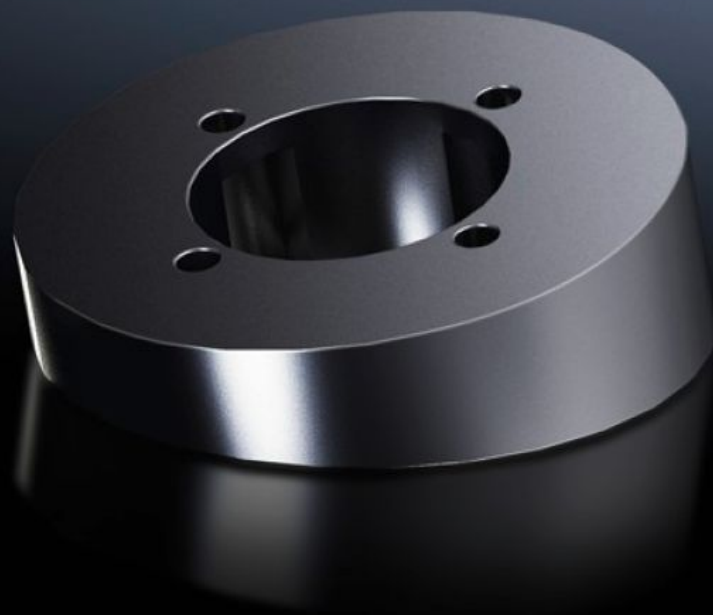


Rittal – The System.

Faster – better – everywhere.



CP 6664.100

Tilting adapter 10° CP 40, stainless steel

State: 2026.5.23 (Source: rittal.com/lt-en)

ENCLOSURES

POWER DISTRIBUTION

CLIMATE CONTROL

IT INFRASTRUCTURE

SOFTWARE & SERVICES

FRIEDHELM LOH GROUP



CP 6664.100 - Tilting adapter 10° CP 40, stainless steel

For mounting between coupling system 40 or attachment system 40 and the command panel.

Features

| | |
|--------------------------------------|--|
| Model No. | CP 6664.100 |
| Design | Tilting adaptor 10° |
| Material | Stainless steel 1.4305 (AISI 303) |
| IP protection category to IEC 60 529 | IP 66 to IEC 60 529, 2014-09 IP X9 to IEC 60 529, 2014-09 |
| Rifid y/n | Yes |
| Packs of | 1 pc(s). |
| Net weight | 0.62 kg |
| Gross weight | 0.721 kg |
| Customs tariff number | 73269098 |
| ETIM 9 | EC000882 |
| ECLASS 8.0 | 27400556 |
| Product description | CP Tilting adaptor 10°, CP 40, stainless steel, 1.4305 |

Approvals

Explanations

Manufacturer's declaration