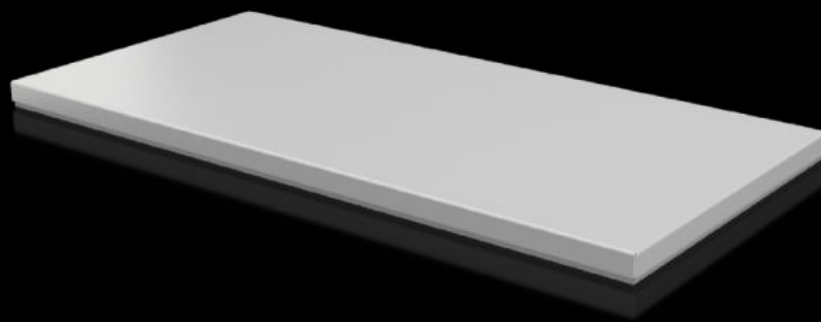


# Rittal – The System.

Faster – better – everywhere.



## CX 6730.910 Cover plate

State: 2026.5.22 (Source: [rittal.com/lt-en](http://rittal.com/lt-en))

ENCLOSURES

POWER DISTRIBUTION

CLIMATE CONTROL

IT INFRASTRUCTURE

SOFTWARE & SERVICES

FRIEDHELM LOH GROUP



# CX 6730.910 - Cover plate For CX console system

To seal the roof opening of CX pedestals and desk units.

## Features

Model No.	CX 6730.910
Material	Sheet steel
Surface finish	Textured paint
Colour	RAL 7035
Supply includes	Assembly parts
To fit	Enclosure type: CX pedestal Width: = 800 mm Depth: = 400 mm
Protection category NEMA	NEMA 1 NEMA 12
IP protection category to IEC 60529	IP 55
Packs of	1 pc(s).
Net weight	5.4 kg
Gross weight	5.53 kg
Customs tariff number	94039910
ETIM 9	EC000784
ETIM 8	EC000784
ECLASS 8.0	27180504
Product description	CX cover plate, for CX pedestal, for WxD: 800x400 mm, sheet steel

## Approvals

# Approvals

---

Approvals	UL + C-UL (listed)
Explanations	Declaration of conformity

---