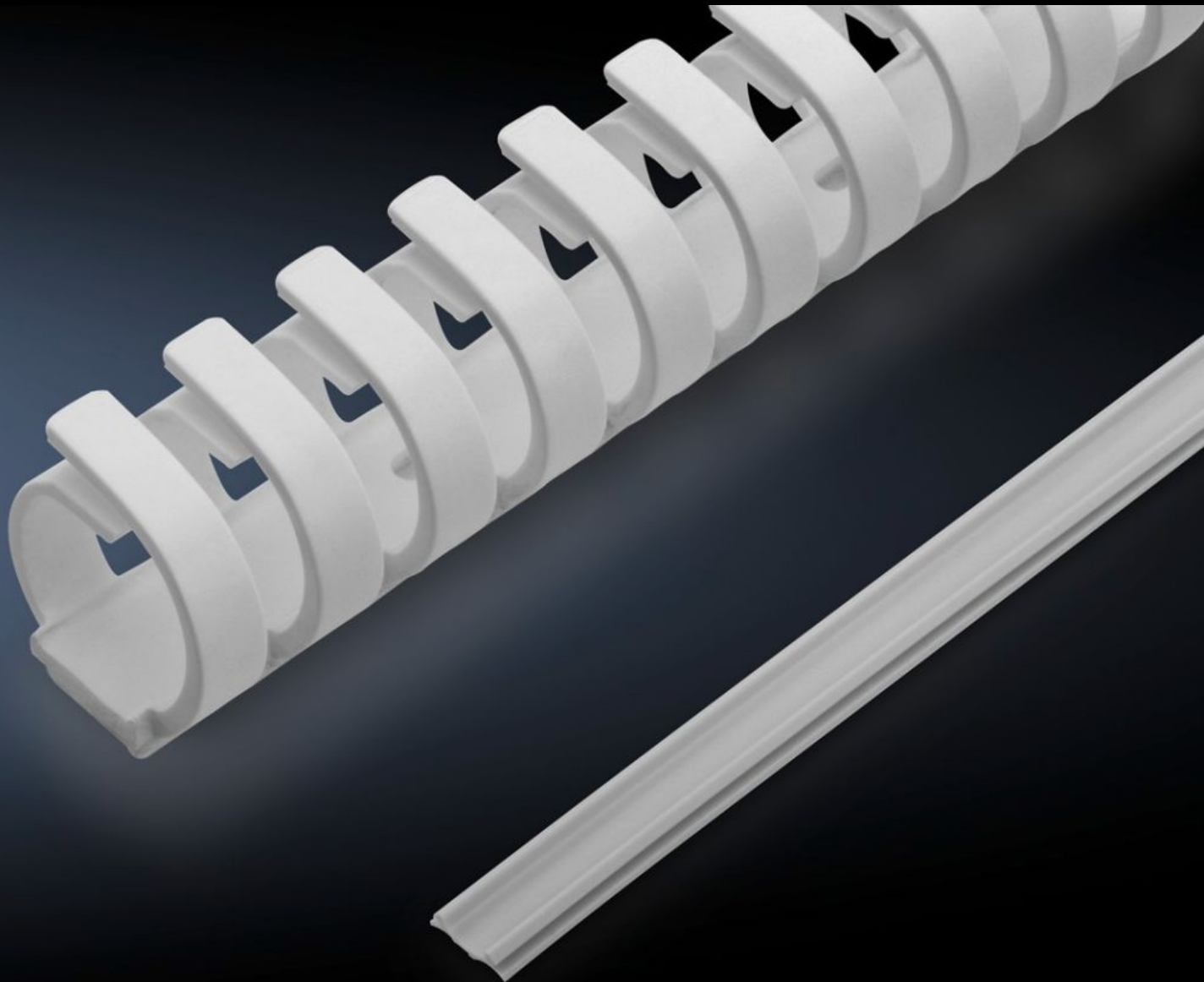


**Rittal – The System.**

Faster – better – everywhere.



# IT 7030.695

## Cable routing set, doors

State: 2026.5.15 (Source: [rittal.com/lt-en](http://rittal.com/lt-en))

ENCLOSURES

POWER DISTRIBUTION

CLIMATE CONTROL

IT INFRASTRUCTURE

SOFTWARE & SERVICES

FRIEDHELM LOH GROUP



# IT 7030.695 - Cable routing set, doors for VX, VX IT

For optimised cable routing on the inside of the VX enclosure system doors when using a CMC III handle.

## Features

Model No.	IT 7030.695
Product description	For optimised cable routing on the inside of the doors of the VX enclosure system when a CMC III handle is used.
Benefits	Shorten the duct cover and the ring cable holder to any desired length
Function principle	When installing handles or reader units with cables, these will need to be laid close to the inside of the door. The cables are routed in the aluminium extrusion of the doors. To close the duct, the duct cover simply snaps onto the profile For cable routing with ventilated or sheet steel doors, the ring cable holder is glued to the inside of the door
Material	Plastic
Colour	Pale grey
Supply includes	Cable routing set, doors Duct cover, 2 m 4 ring cable holders, 0.5 m Assembly parts
Packs of	1 pc(s).
Net weight	0.202 kg
Gross weight	0.222 kg
Customs tariff number	83024200
ETIM 9	EC000261
ECLASS 8.0	27180101
Product description	VX IT Cable routing set doors VX IT / VX IE, 2m