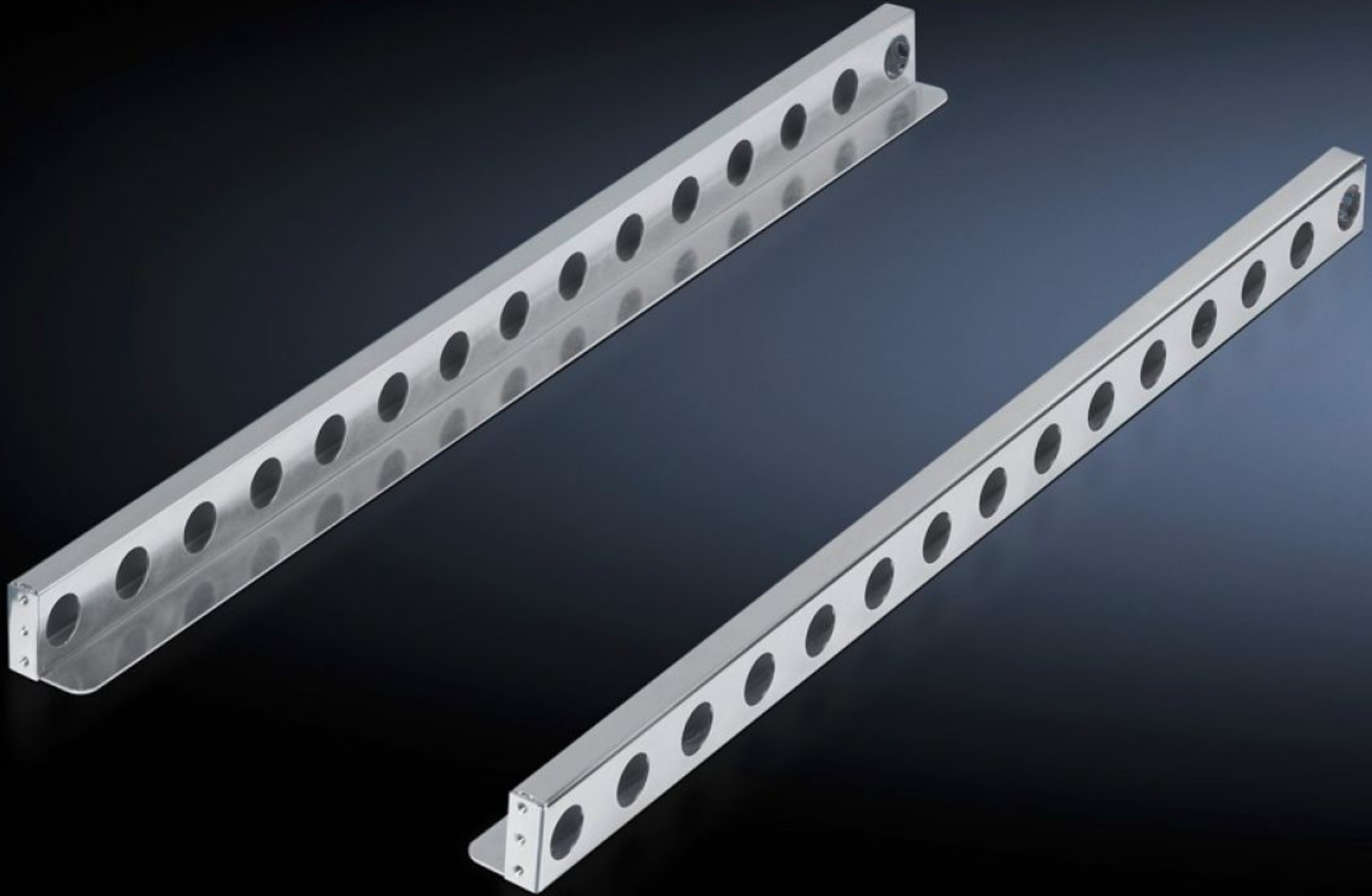


# Rittal – The System.

Faster – better – everywhere.



## DK 7063.740 Slide rail, heavy-duty

State: 2026.4.5 (Source: [rittal.com/lt-en](http://rittal.com/lt-en))

ENCLOSURES

POWER DISTRIBUTION

CLIMATE CONTROL

IT INFRASTRUCTURE

SOFTWARE & SERVICES

FRIEDHELM LOH GROUP



# DK 7063.740 - Slide rail, heavy-duty for TE

With L-shaped mounting angles or 482.6 mm (19") mounting frame and a clearance between levels of 745 mm, easily and quickly installed thanks to locating brackets for the rear level.



## Features

|                                  |   |
|----------------------------------|---|
| Model No.                        | DK 7063.740   |
| Product description              | For L-shaped mounting angles with a preconfigured clearance between levels of 740 mm. Easily and quickly installed due to locating brackets for the rear level. |
| Material                         | Sheet steel   |
| Surface finish                   | Zinc-plated   |
| Supply includes                  | Assembly parts  |
| Distance between mounting levels | 745 mm  |
| Load capacity static             | 1,000 N   |
| Contact surface                  | Width: 50 mm<br>Depth: 734 mm   |
| Packs of                         | 2 pc(s).  |
| Net weight                       | 2.71 kg   |
| Gross weight                     | 2.909 kg  |

# Features

---

|                       |   |
|-----------------------|---|
| Customs tariff number | 73269098  |
| ETIM 9                | EC002620  |
| ECLASS 8.0            | 27189261  |
| Product description   | DK slide rail, heavy-duty, 1000 N static, for L-shaped mounting angles or 482.6 mm (19") mounting frames and a clearance of 745 mm between levels |