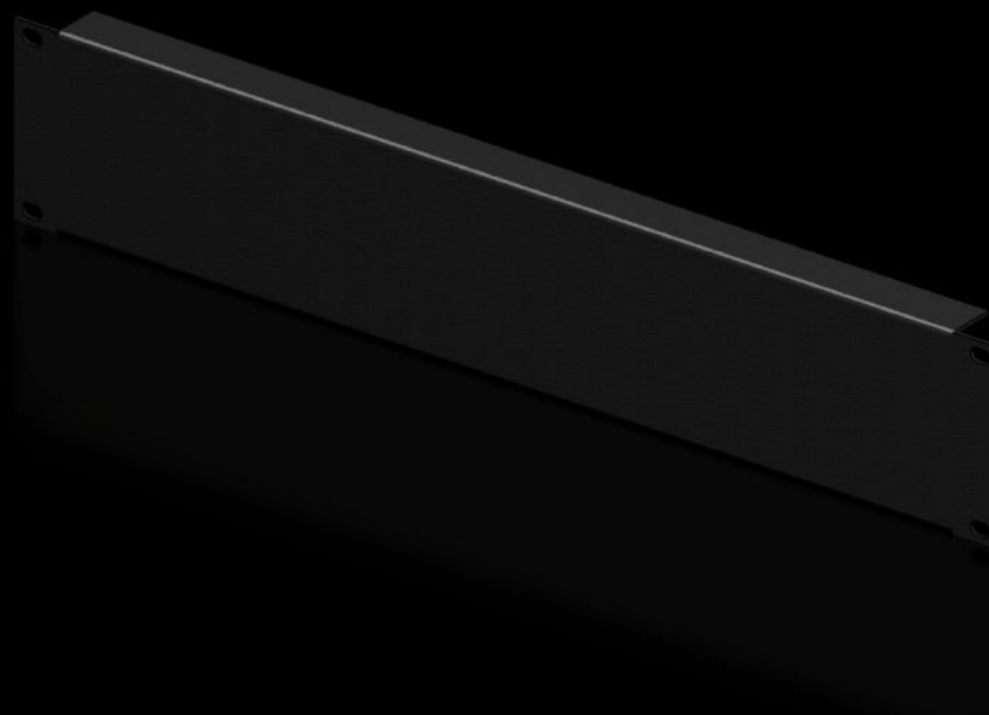


# Rittal – The System.

Faster – better – everywhere.



## DK 7152.005

## Blanking panel, 482.6 mm (19")

State: 2025.6.27 (Source: [rittal.com/lt-en](https://rittal.com/lt-en))

ENCLOSURES

POWER DISTRIBUTION

CLIMATE CONTROL

IT INFRASTRUCTURE

SOFTWARE & SERVICES

FRIEDHELM LOH GROUP



# DK 7152.005 - Blanking panel, 482.6 mm (19")

As an extension cover or for population as required.



## Features

Model No.	DK 7152.005
Product description	As an extension cover or for population as required.
Material	Sheet steel
Colour	RAL 9005
Build-up height	88 mm
Dimensions	Width: 482.6 mm
Units	2 U
Packs of	2 pc(s).
Net weight	1.092
Gross weight	1.292
PCF per pack (cradle-to-gate)	4.9 kg CO2 eq (Cat B)
Note on PCF category	Category B: PCF value (cradle-to-gate) based on the product weight, approximately calculated and self-declared
Customs tariff number	73269098
EAN	4028177492110
ETIM 9	EC000456
ECLASS 8.0	27189217

# Tender text

482.6 mm (19") blanking panel, 2 U

Used as an extension cover or for fitting separately.

Installation height: 88.2 mm, 2 U

Version: Steel sheet

Spray-finish: RAL 9005

Dimensions (W x H x D): 483 mm x 88.2 mm x 23 mm