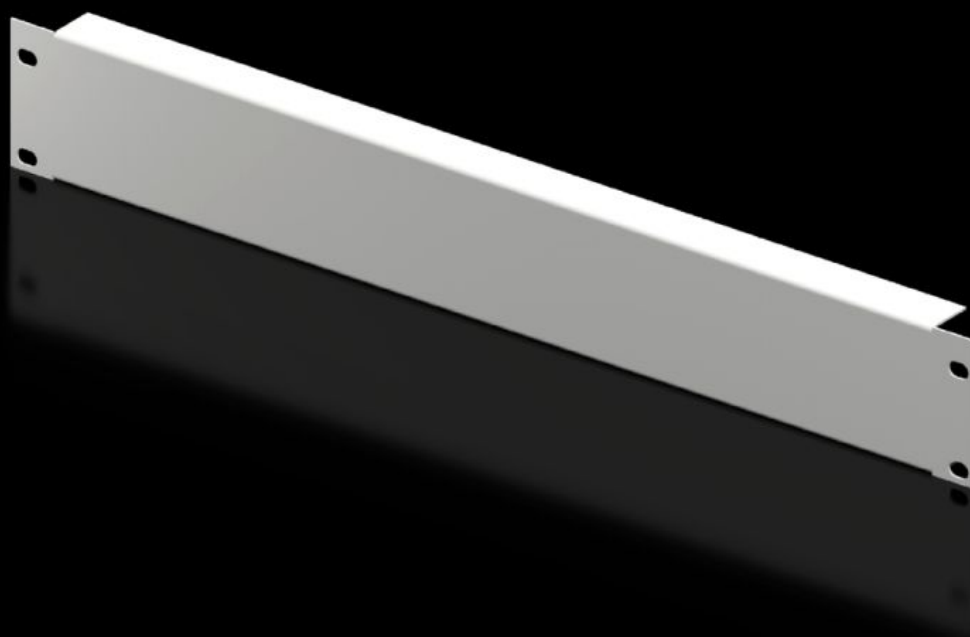
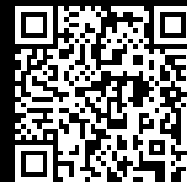


# Rittal – The System.

Faster – better – everywhere.



## DK 7157.035

## Blanking panel, 482.6 mm (19")

State: 2026.1.12 (Source: [rittal.com/lt-en](https://www.rittal.com/lt-en))

ENCLOSURES

POWER DISTRIBUTION

CLIMATE CONTROL

IT INFRASTRUCTURE

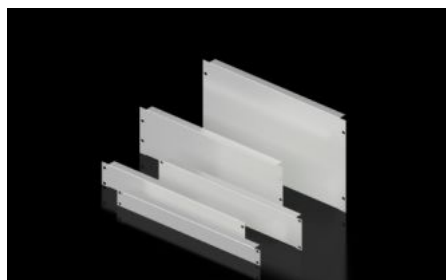
SOFTWARE & SERVICES

FRIEDHELM LOH GROUP



# DK 7157.035 - Blanking panel, 482.6 mm (19")

As an extension cover or for population as required.



## Features

Model No.	DK 7157.035
Product description	As an extension cover or for population as required.
Material	Sheet steel
Colour	RAL 7035
Build-up height	66 mm
Dimensions	Width: 482.6 mm
Units	1.5 U
Packs of	2 pc(s).
Net weight	1
Gross weight	1.022
PCF per pack (cradle-to-gate)	3.9 kg CO2 eq (Cat B)
Note on PCF category	Category B: PCF value (cradle-to-gate) based on the product weight, approximately calculated and self-declared
Customs tariff number	94039910
EAN	4028177165786
ETIM 9	EC000456
ECLASS 8.0	27189217

# Tender text

482.6 mm (19") blanking panel, 1.5 U

Used as an extension cover or for individual population.

Installation height: 66 mm, 1.5 U

Version: Sheet steel

Paint finish: RAL 7035