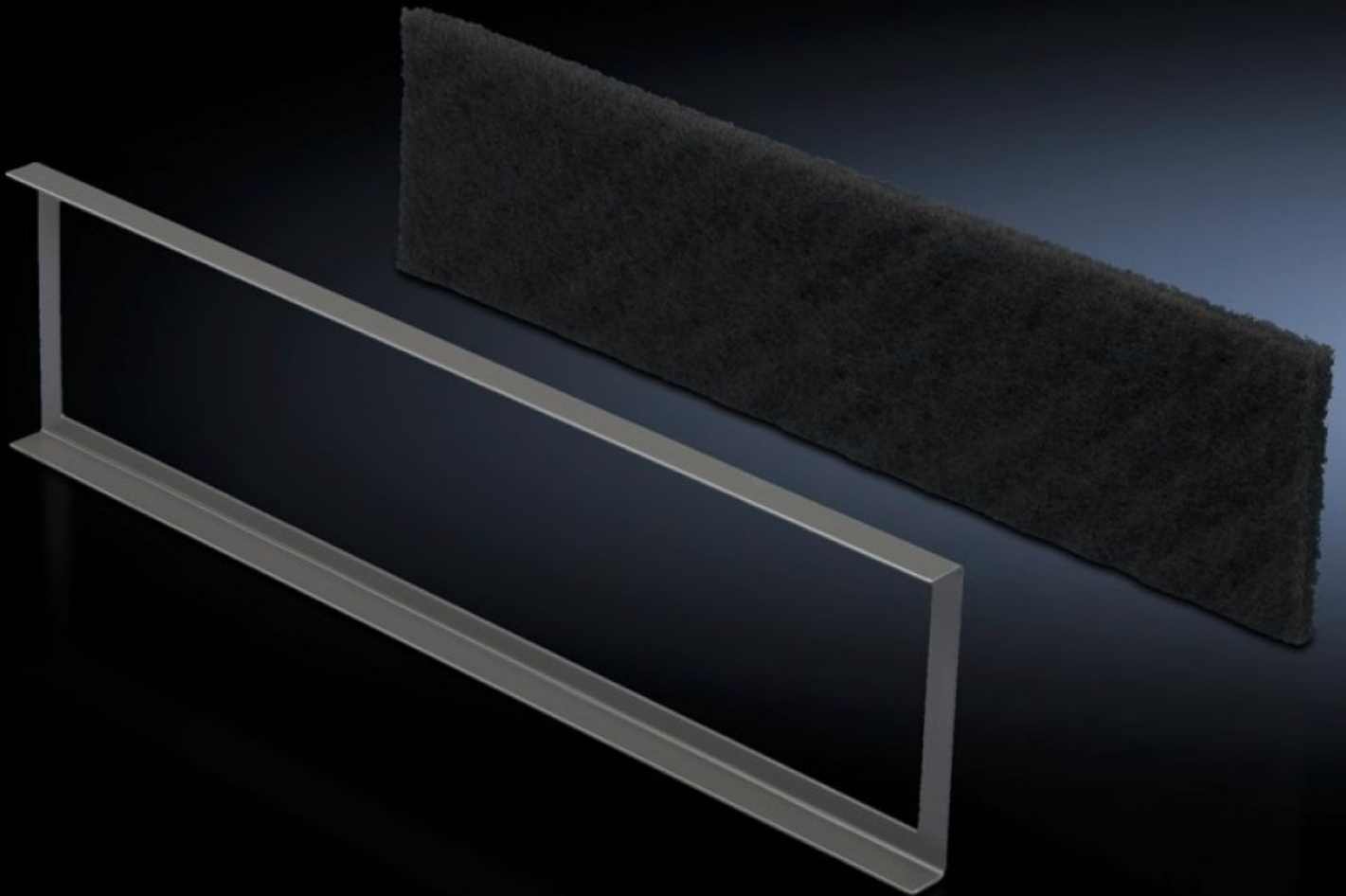


# Rittal – The System.

Faster – better – everywhere.



## DK 7561.500 Filter mat

State: 2026.6.21 (Source: [rittal.com/lt-en](http://rittal.com/lt-en))

ENCLOSURES

POWER DISTRIBUTION

CLIMATE CONTROL

IT INFRASTRUCTURE

SOFTWARE & SERVICES

FRIEDHELM LOH GROUP



# DK 7561.500 - Filter mat for base/plinth component, vented and base/plinth component, vented, with designer trim panel

Mounting frame including filter mat for the base/plinth trim.

## Features

Model No.	DK 7561.500
Product description	To cover the trim panel in the base/plinth component. The mounting frame slides into position behind the filter mat in the base/plinth trim panel. Filter class G3 to DIN EN 779.
Supply includes	Mounting frame
To fit	Width: 600 mm
Packs of	1 pc(s).
Net weight	0.23 kg
Gross weight	0.3 kg
Customs tariff number	56039390
ECLASS 8.0	27189272
Product description	DK Filter mat, for base/plinth component, vented, for base/plinth component, vented with designer cover, To cover the trim panel in the base/plinth component, for width: 600 mm