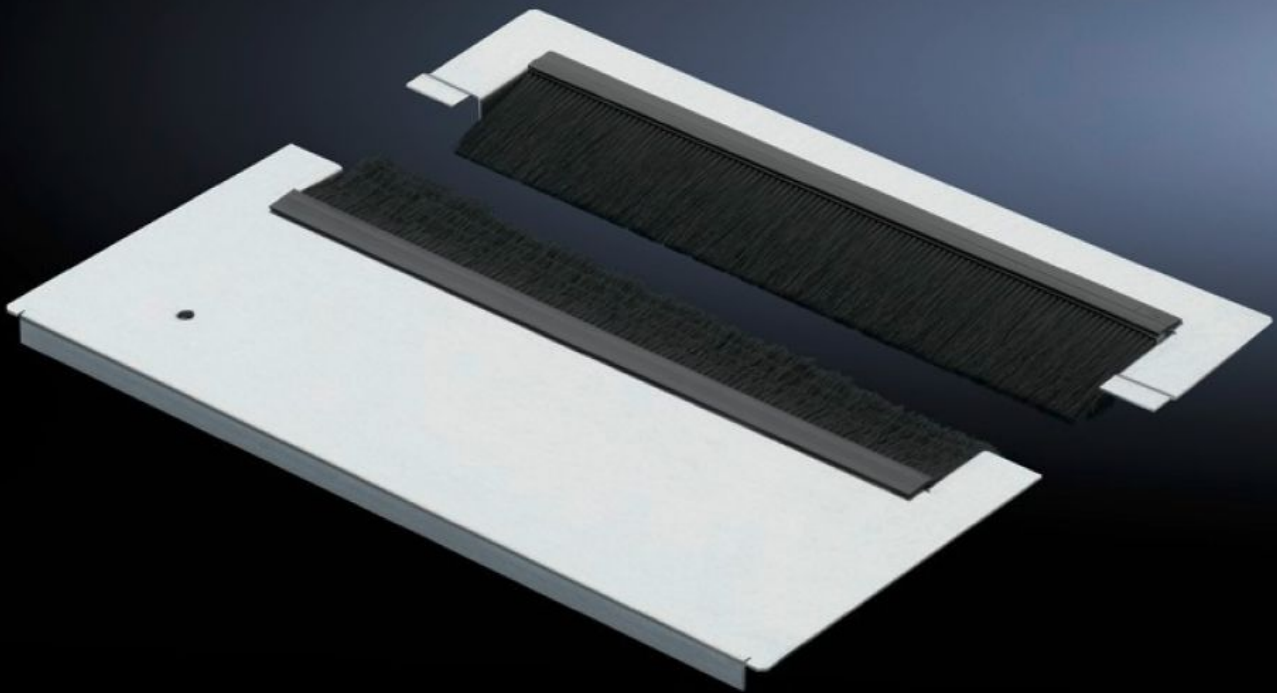


Rittal – The System.

Faster – better – everywhere.



TS 7825.387

Gland plate modules for cable entry

State: 2026.3.16 (Source: rittal.com/lt-en)

ENCLOSURES

POWER DISTRIBUTION

CLIMATE CONTROL

IT INFRASTRUCTURE

SOFTWARE & SERVICES

FRIEDHELM LOH GROUP



TS 7825.387 - Gland plate modules for cable entry for TS, TS IT, VX SE

The two-part base module has a special cable entry with alternate offset brush strips which guarantee an excellent seal even with large cable quantities.



Features

| | |
|---------------------|--|
| Model No. | TS 7825.387 |
| Design | Cable entry with brush strip, super-airtight |
| Product description | Special brush strips with brush strips offset on alternate sides offer maximum possible protection with professional cable entry. The two-piece design even allows retrospective fitting of the base module with the cables already installed. |
| Material | Module plate: Sheet steel Brush strip: Plastic, UL 94 HB, halogen-free |
| Surface finish | Module plate: Zinc-plated |
| Supply includes | Assembly parts Including clips |
| Note | Several gland module plates need to be combined to close off the base completely in the TS-IT |
| Dimensions | Depth: 237.5 mm |
| To fit | Enclosure type: TS TS IT SE Width: 800 mm |
| Packs of | 1 pc(s). |

Features

| | |
|-----------------------|--|
| Net weight | 1.811 kg |
| Gross weight | 1.9 kg |
| Customs tariff number | 73269098 |
| ETIM 9 | EC002620 |
| ECLASS 8.0 | 27189261 |
| Product description | DK Gland plate module, For W: 800 mm, For cable entry with brush, super-airtight |

Tender text

TS 8 / FR(i) base module

For use in the base frame of the enclosure frame.

Module depth 238 mm, can be exchanged for base module of the same dimensions

Base module can be used in enclosures of depth 600, 800, 900, 1,000 and 1,200 mm.

The base module has a large opening for cable entry into the enclosure. The base plate is divided in two and can thus be taken out at any time for more straightforward assembly during installation work, even for already existing pre-installation. The entry opening has special brush strips on both sides which are mutually offset and thus make efficient sealing off of the inner area from the surrounding area possible even for larger amounts of cables.

Material: Sheet steel

For enclosure width: 800 mm