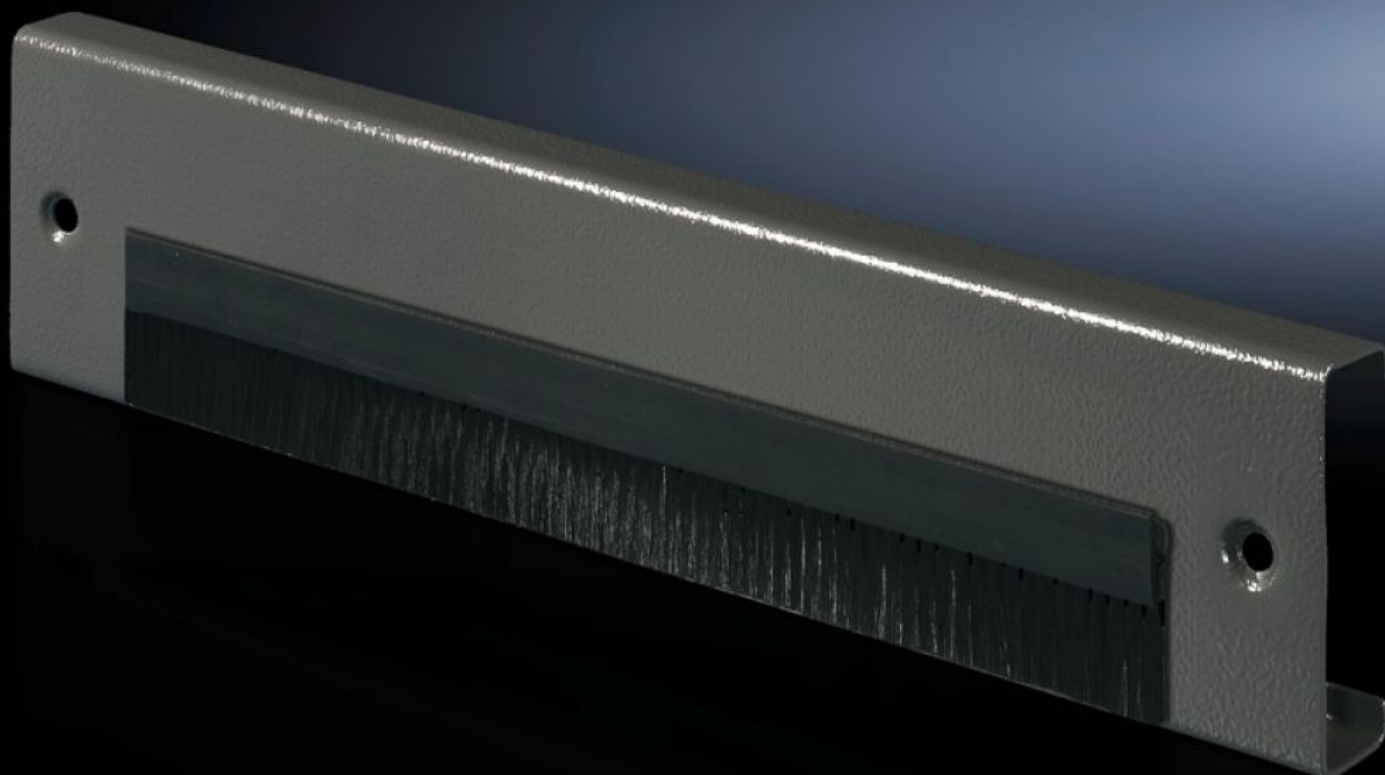
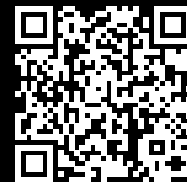


Rittal – The System.

Faster – better – everywhere.



TS 7825.807 Base/plinth trim

State: 2025.8.29 (Source: [rittal.com/lt-en](https://www.rittal.com/lt-en))

ENCLOSURES

POWER DISTRIBUTION

CLIMATE CONTROL

IT INFRASTRUCTURE

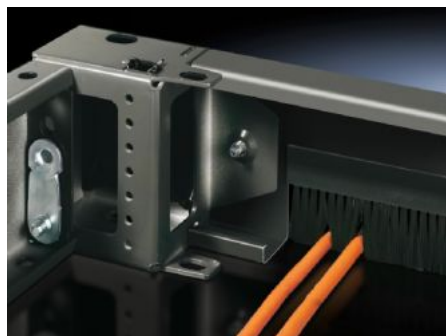
SOFTWARE & SERVICES

FRIEDHELM LOH GROUP



TS 7825.807 - Base/plinth trim with brush strip for base/plinth TS

Base/plinth trim panels with brush strip.



Features

Model No.	TS 7825.807
Product description	To supplement the modular base/plinth concept. May also be exchanged retrospectively for the front or rear trim panel of base/plinth components 100 or 200 mm high. Open on one side for retrospective mounting if cables have already been inserted.
Material	Sheet steel
Surface finish	Spray-finished
Colour	RAL 7035
Dimensions	Height: 100 mm
Suitable for plinth width	800 mm
Packs of	1 pc(s).
Net weight	1
Gross weight	1.2
EAN	4028177520561
ECLASS 8.0	27189260