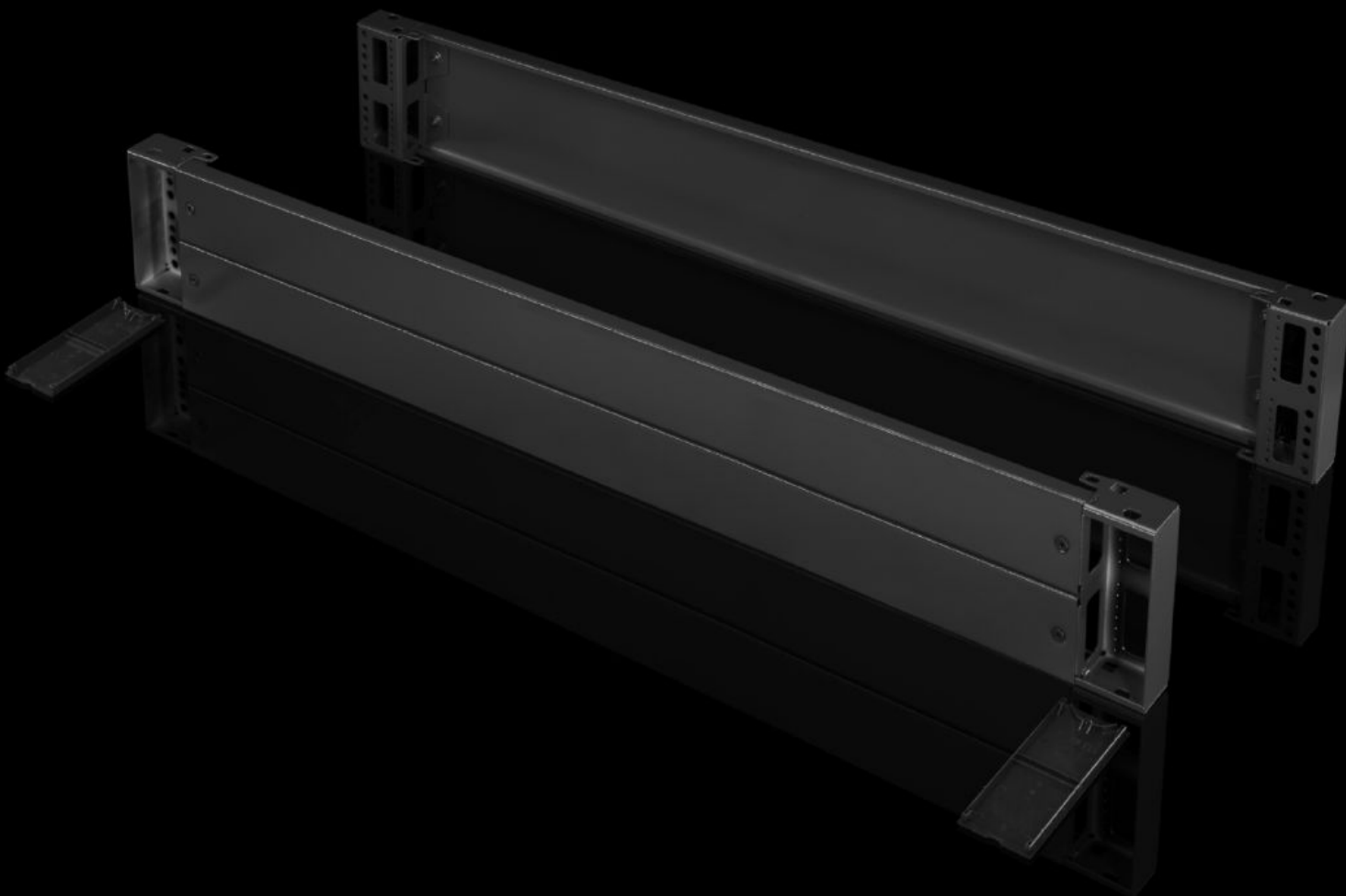


Rittal – The System.

Faster – better – everywhere.



TS 8602.200

Base/plinth components, front and rear, 200 mm

State: 2024.5.23 (Source: [rittal.com/lt-en](https://www.rittal.com/lt-en))

ENCLOSURES

POWER DISTRIBUTION

CLIMATE CONTROL

IT INFRASTRUCTURE

SOFTWARE & SERVICES

FRIEDHELM LOH GROUP



TS 8602.200 - Base/plinth components, front and rear, 200 mm Sheet steel, for TS, TS IT, SE, CM, TP, PC, IW, TE

Base/plinth component consisting of one trim panel and two pre-configured corner pieces. In 200 mm high base/plinth components, one trim panel is divided into two for cable entry.

Features

Model No.	TS 8602.200
Design	Solid
Product description	Base/plinth component consisting of one trim panel and two pre-configured corner pieces. In 200 mm high base/plinth components, one trim panel is divided into two for cable entry.
Material	Base/plinth components: Sheet steel Cover caps: Plastic
Surface finish	Spray-finished
Colour	RAL 7022 Cover caps: RAL 9005
Supply includes	2 base/plinth components 4 cover caps Assembly parts
Dimensions	Height: 200 mm
To fit	Enclosure type: TS: = 1,200 mm Enclosure type: SE Enclosure type: CM Enclosure type: TP Enclosure type: PC Enclosure type: IW Enclosure type: TS IT
Packs of	2 pc(s).
Weight/pack	11.358 kg
Customs tariff number	94039910
EAN	4028177208599

Features

ETIM 7.0	EC000721
ECLASS 8.0	27182003