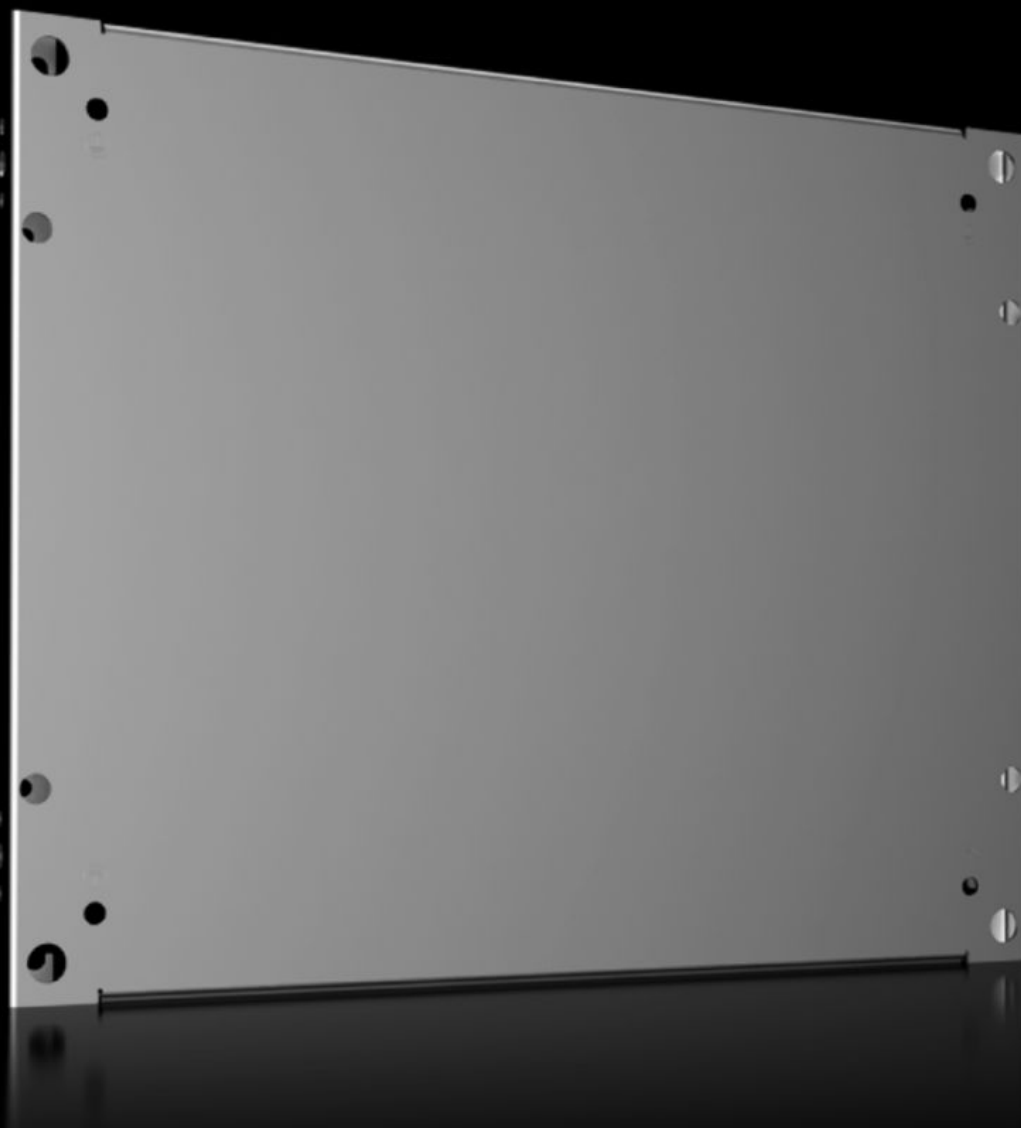


Rittal – The System.

Faster – better – everywhere.



VX 8617.520

Partial mounting plates

State: 2025.9.11 (Source: rittal.com/lt-en)

ENCLOSURES

POWER DISTRIBUTION

CLIMATE CONTROL

IT INFRASTRUCTURE

SOFTWARE & SERVICES

FRIEDHELM LOH GROUP



VX 8617.520 - Partial mounting plates for VX, VX SE, PC, IW

To accommodate additional components inside the enclosure. Partial mounting plates can be used extremely flexibly, providing a platform for a diverse range of applications.

Features

| | |
|----------------------|--|
| Model No. | VX 8617.520 |
| Product description | To accommodate additional components inside the enclosure. Partial mounting plates can be used extremely flexibly, providing a platform for a diverse range of applications. |
| Material | Sheet steel, 2.5 mm |
| Surface finish | Zinc-plated |
| Supply includes | Assembly parts |
| To fit door width | 600 mm |
| Installation options | <p>For optional installation either upright as a vertical mounting surface, or flat as a horizontal base.</p> <p>Attach directly onto the enclosure section</p> <p>With a set forward configuration, attachment is via punched sections with mounting flanges at any mounting level in the enclosure</p> <p>For multi-level installation one behind the other, partial mounting plates may be vertically hinged, via hinge attachment, to allow rapid access to the levels behind.</p> |
| Note | Adaptor rail VX is required for installing in VX SE, PC, IW |
| Dimensions | Width: 500 mm Depth: 400 mm |
| To fit | Enclosure type: VX VX SE PC Width: = 600 mm Depth: = 500 mm = 600 mm |

Features

| | |
|-------------------------------|--|
| Packs of | 1 pc(s). |
| Net weight | 4.95 |
| Gross weight | 5.66 |
| PCF per pack (cradle-to-gate) | 21.6 kg CO2 eq (Cat B) |
| Note on PCF category | Category B: PCF value (cradle-to-gate) based on the product weight, approximately calculated and self-declared |
| Customs tariff number | 94039910 |
| EAN | 4028177919372 |
| ETIM 9 | EC000213 |
| ECLASS 8.0 | 27409216 |