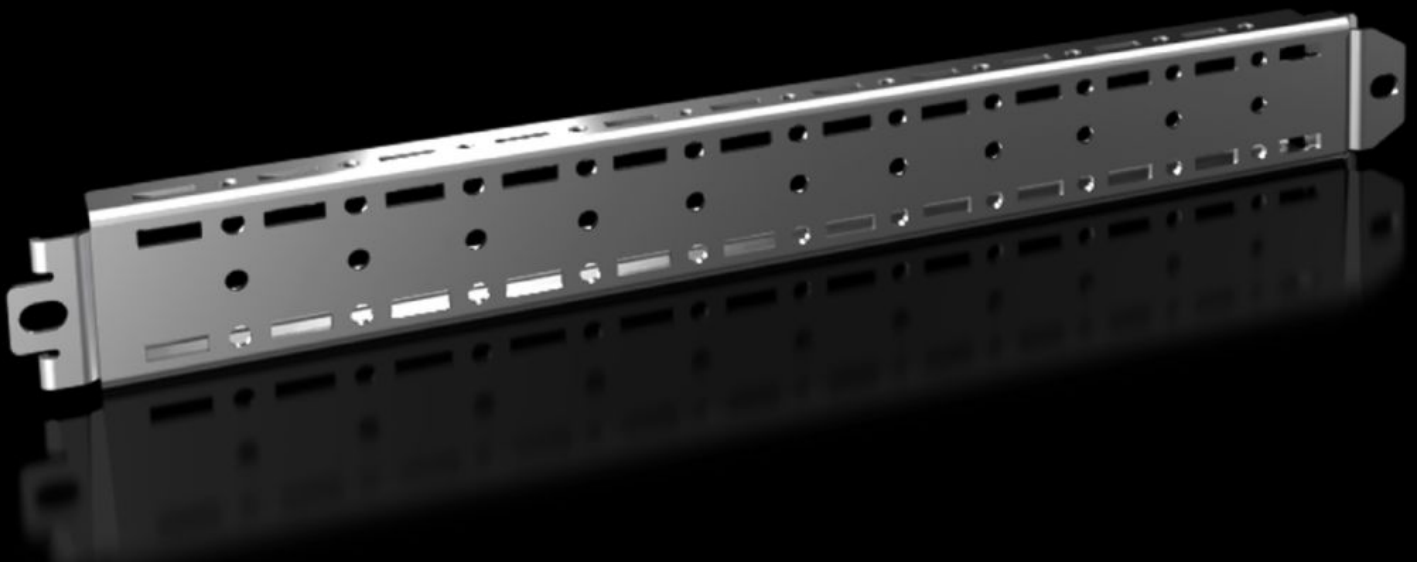


Rittal – The System.

Faster – better – everywhere.



VX 8617.700

Punched rail 18 x 39 mm

State: 2026.7.8 (Source: rittal.com/lt-en)

ENCLOSURES

POWER DISTRIBUTION

CLIMATE CONTROL

IT INFRASTRUCTURE

SOFTWARE & SERVICES

FRIEDHELM LOH GROUP



VX 8617.700 - Punched rail 18 x 39 mm for VX, VX SE

For variable, individual interior installation of the enclosure frame on the inner mounting level.

Features

Model No.	VX 8617.700
Product description	For variable, individual interior installation of the enclosure frame on the inner mounting level.
Benefits	May also be used in conjunction with other punched sections Prepared at the rear to accommodate cable ties for optimum cable routing inside the enclosure Simply insert into the system punchings, even with the mounting panel in its rearmost position
Material	Sheet steel
Surface finish	Zinc-plated
Supply includes	Assembly parts
Installation options	In VX on the inner mounting level, on the VX enclosure section In VX SE, on the enclosure section in conjunction with VX adaptor rail
Note	In enclosures with a mounting plate, 2 punched rails are already included with the supply.
To fit	Enclosure type: VX VX SE Width/depth: 400 mm
Packs of	4 pc(s).
Net weight	1.428 kg
Gross weight	1.524 kg
PCF per pack (cradle-to-gate)	6.08
Customs tariff number	73269098
ETIM 9	EC002620
ECLASS 8.0	27189234

Features

Product description

VX Punched rail 18 x 38 mm, for W/D: 400 mm

Approvals

Explanations

PCF-declaration