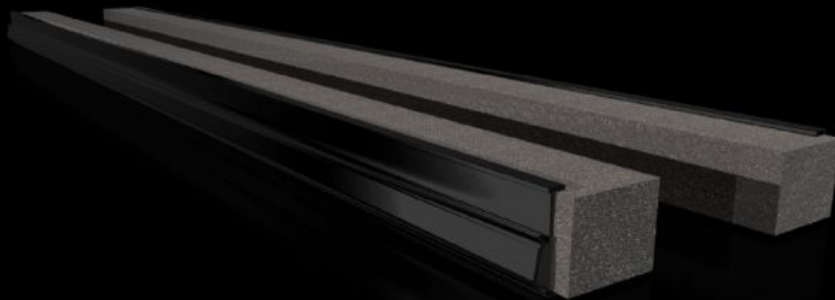


# Rittal – The System.

Faster – better – everywhere.



## VX 8618.800

## Section for cable entry, centre

State: 2026.4.7 (Source: [rittal.com/lt-en](http://rittal.com/lt-en))

ENCLOSURES

POWER DISTRIBUTION

CLIMATE CONTROL

IT INFRASTRUCTURE

SOFTWARE & SERVICES

FRIEDHELM LOH GROUP



# VX 8618.800 - Section for cable entry, centre

The section is fitted directly onto the gland plates. In this way, when installing the mounting plate in the forward mounting position, the cables may be routed directly onto a cable clamp rail without large bending radii. In conjunction with the cable clamp rail, this enables optimum adjustment between the cable entry and mounting plate.

## Features

|                       |  |
|-----------------------|--|
| Model No.             | VX 8618.800  |
| Benefits              | Simple assembly<br>Full-surface support<br>High level of sealing of cables inserted into the enclosure   |
| Applications          | For top-mounting on gland plates.  |
| Material              | Hard PVC<br>Flame-resistant, self-extinguishing<br>Temperature resistant to +60 °C<br>Seal: PU foam<br>Cross-section: 30 x 25 mm   |
| Supply includes       | Plug-in sections, incl. foam rubber clamp strip  |
| Note                  | You will need two pieces per cable entry point.<br>From an enclosure width of 1000 mm, the base assembly is divided into two sections in the width. Two cable entry points (left/right) may be used. |
| To fit                | Enclosure type: VX: = 600 mm<br>Enclosure type: VX SE<br>Enclosure type: CX pedestal<br>Enclosure type: CX one-piece console   |
| Packs of              | 2 pc(s).   |
| Net weight            | 0.16 kg  |
| Gross weight          | 0.167 kg   |
| Customs tariff number | 39269097   |
| ETIM 9                | EC000211   |

# Features

---

ECLASS 8.0

27142421

---

Product description

VX Section for cable entry, centre, for W: 600 mm