

# Rittal – The System.

Faster – better – everywhere.



## VX 8619.801

### Cable entry plates

State: 2026.2.20 (Source: [rittal.com/lt-en](https://www.rittal.com/lt-en))

ENCLOSURES

POWER DISTRIBUTION

CLIMATE CONTROL

IT INFRASTRUCTURE

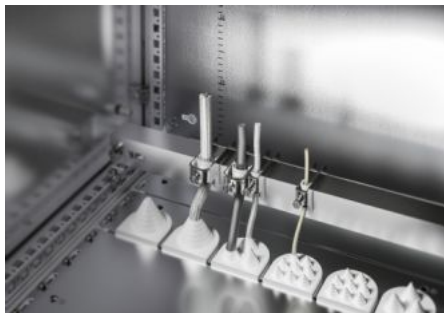
SOFTWARE & SERVICES

FRIEDHELM LOH GROUP



# VX 8619.801 - Cable entry plates for VX

For cable entry grommets and connector grommets, may be exchanged for segments of the divided gland plates supplied as standard.



## Features

Model No.	VX 8619.801
Product description	For cable entry grommets and connector grommets, may be exchanged for segments of the divided gland plates supplied as standard.
Material	Sheet steel
Surface finish	Zinc-plated
Supply includes	Assembly parts
Number of cut-outs	8
To fit	Enclosure type: VX: = 800 mm Enclosure type: VX SE
IP protection category to IEC 60 529	IP 55 in conjunction with cable entry grommets or connector grommets
Packs of	2 pc(s).
Net weight	1.348 kg
Gross weight	1.5 kg
Customs tariff number	73269098
ETIM 9	EC002620
ECLASS 8.0	27189261

# Features

---

Product description	VX Cable entry plate, for W: 800 mm
---------------------	-------------------------------------