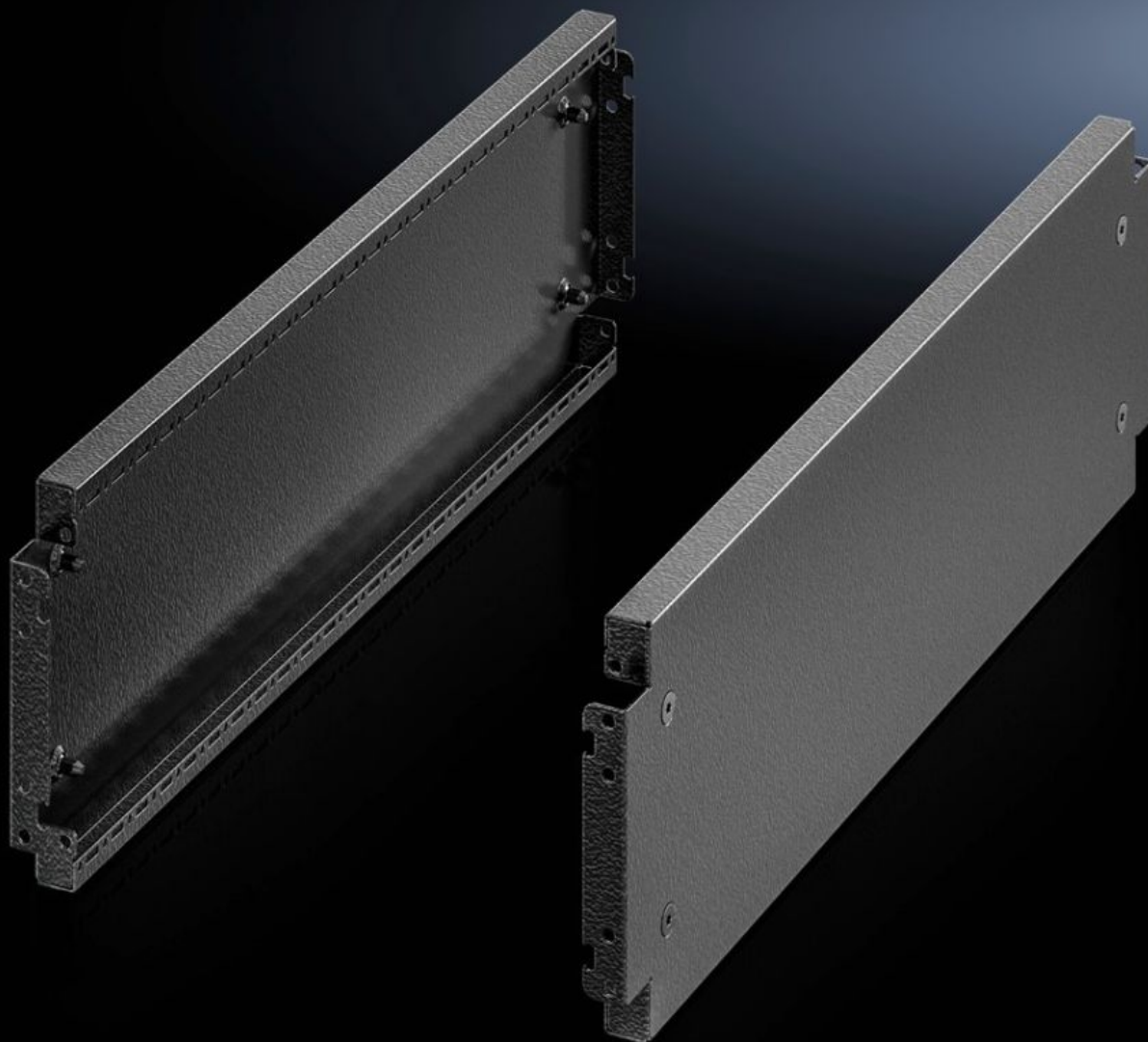
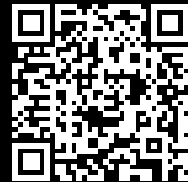


**Rittal – The System.**

Faster – better – everywhere.



**VX 8640.043**

**Base/plinth trim panels, side, 200 mm**

State: 2025.8.18 (Source: [rittal.com/lt-en](https://www.rittal.com/lt-en))

ENCLOSURES

POWER DISTRIBUTION

CLIMATE CONTROL

IT INFRASTRUCTURE

SOFTWARE & SERVICES

FRIEDHELM LOH GROUP



# VX 8640.043 - Base/plinth trim panels, side, 200 mm for base/plinth system VX, sheet steel

To finish off a base/plinth unit at the sides and for additional stability or interior configuration of bayed base/plinths. One 200 mm high or two 100 mm high trim panels may optionally be fitted on 200 mm high base/plinths.

## Features

Model No.	VX 8640.043
Product description	To finish off a base/plinth unit at the sides and for additional stabilisation or for the interior configuration of bayed base/plinths. One 200 mm high or two 100 mm high trim panels may optionally be fitted on 200 mm high base/plinths.
Material	Sheet steel
Colour	RAL 9005
Supply includes	Assembly parts
Dimensions	Height: 200 mm
To fit	Depth: = 600 mm
Type rating to UL 50E	Type 1 Type 12
Weight/pack	3 kg
Packs of	2 pc(s).
Net weight	2.8
Gross weight	2.98
Customs tariff number	94039910
EAN	4028177959040
E-Number Sweden	E3465386
ETIM 9	EC000721
ECLASS 8.0	27182003

# Approvals

---

Approvals

UL + C-UL - FTTA