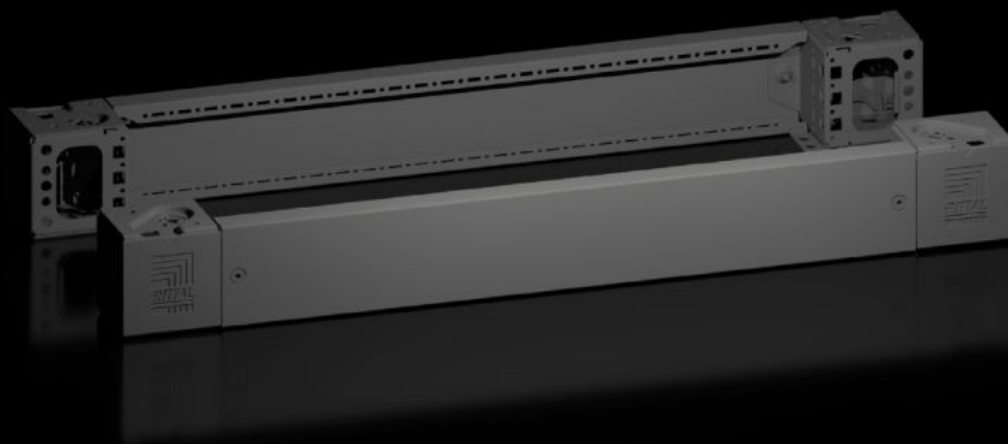


Rittal – The System.

Faster – better – everywhere.



VX 8660.004

Base/plinth corner pieces with base/plinth trim panels, front and rear

State: 2025.6.19 (Source: rittal.com/lt-en)

ENCLOSURES

POWER DISTRIBUTION

CLIMATE CONTROL

IT INFRASTRUCTURE

SOFTWARE & SERVICES

FRIEDHELM LOH GROUP



VX 8660.004 - Base/plinth corner pieces with base/plinth trim panels, front and rear for base/plinth system VX, sheet steel

Base/plinth corner pieces with trim panels for flexible cable entry.



Features

| | |
|-----------------|---|
| Model No. | VX 8660.004 |
| Benefits | Reliable – Excellent stability of the base/plinth Flexible – Countless interior installation options with VX accessories Simple – Flush termination between the baying points |
| Material | Base/plinth corner piece: Sheet steel Base/plinth trim panel front/rear: Sheet steel Corner and baying cover: Plastic |
| Colour | RAL 9005 |
| Supply includes | 4 corner covers Assembly parts 4 base/plinth corner pieces, 100 mm high 2 base/plinth trim panels, front/rear, 100 mm high |
| Note | Side base/plinth trim panels finish off a base/plinth unit or provide additional stabilisation between base/plinths or enable interior configuration of the base/plinth |
| Dimensions | Height: 100 mm |

Features

| | |
|-------------------------------|--|
| To fit | Enclosure type: VX VX IT VX SE TX CableNet TS TS IT TP PC IW CX Width: = 850 mm |
| Type rating to UL 50E | Type 1 Type 12 |
| Weight/pack | 5.55 kg |
| Packs of | 2 pc(s). |
| Net weight | 5.36 |
| Gross weight | 5.551 |
| PCF per pack (cradle-to-gate) | 21.1 kg CO2 eq (Cat B) |
| Note on PCF category | Category B: PCF value (cradle-to-gate) based on the product weight, approximately calculated and self-declared |
| Customs tariff number | 94039910 |
| EAN | 4028177978065 |
| ETIM 9 | EC000721 |
| ETIM 8 | EC000721 |
| ECLASS 8.0 | 27182003 |

Approvals

| | |
|-----------|------------------|
| Approvals | UL + C-UL - FTTA |
|-----------|------------------|