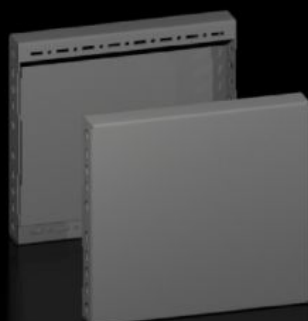


# Rittal – The System.

Faster – better – everywhere.



## VX 8660.041

## Base/plinth trim panels, side

State: 2026.5.31 (Source: [rittal.com/lt-en](http://rittal.com/lt-en))

ENCLOSURES

POWER DISTRIBUTION

CLIMATE CONTROL

IT INFRASTRUCTURE

SOFTWARE & SERVICES

FRIEDHELM LOH GROUP



# VX 8660.041 - Base/plinth trim panels, side for base/plinth system VX, sheet steel

To finish off a base/plinth unit at the sides and for additional stability or interior configuration of bayed base/plinths. One 200 mm high or two 100 mm high trim panels may optionally be fitted on 200 mm high base/plinths.



## Features

Model No.	VX 8660.041
Design	Solid
Material	Sheet steel
Colour	RAL 9005
Supply includes	Assembly parts
Dimensions	Height: 200 mm
To fit	Enclosure type: VX VX IT VX SE TX CableNet TS TS IT TP PC IW CX Depth: = 400 mm

# Features

---

Type rating to UL 50E	Type 1 Type 12
Weight/pack	1.89 kg
Packs of	2 pc(s).
To fit	for base/plinth system VX, sheet steel
Net weight	1.7 kg
Gross weight	1.887 kg
PCF per pack (cradle-to-gate)	8.73 kg CO2 eq (Cat B)
Note on PCF category	Category B: PCF value (cradle-to-gate) based on the product weight, approximately calculated and self-declared
Customs tariff number	94039910
ETIM 9	EC000721
ETIM 8	EC000721
ECLASS 8.0	27182003
Product description	VX base/plinth trim panel, side, H: 200 mm, for D: 400 mm, sheet steel

# Approvals

---

Explanations	PCF-declaration
--------------	-----------------