

**Rittal – The System.**

Faster – better – everywhere.



**VX 8660.071**

**Base/plinth trim panels, sides, for  
VX base/plinth system, stainless  
steel**

State: 2026.5.23 (Source: [rittal.com/lt-en](http://rittal.com/lt-en))

ENCLOSURES

POWER DISTRIBUTION

CLIMATE CONTROL

IT INFRASTRUCTURE

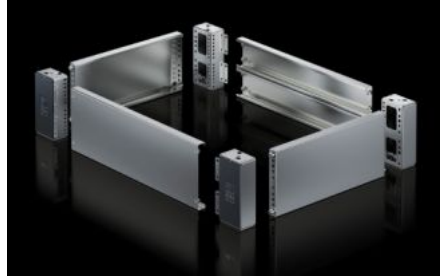
SOFTWARE & SERVICES

FRIEDHELM LOH GROUP



# VX 8660.071 - Base/plinth trim panels, sides, for VX base/plinth system, stainless steel New version

Stainless steel base/plinth trim panels are used in the depth to finish off a base/plinth unit at the sides.



## Features

|                       |   |
|-----------------------|---|
| Model No.             | VX 8660.071   |
| Material              | Stainless steel 1.4301 (AISI 304)   |
| Surface finish        | Brushed, grain 400  |
| Supply includes       | Assembly parts  |
| Note                  | Components from the 1st generation base/plinth system cannot be combined with components from the 2nd generation base/plinth system |
| Dimensions            | Height: 100 mm  |
| To fit                | Enclosure type: VX<br>VX SE<br>TS<br>PC<br>Depth: = 500 mm  |
| Type rating to UL 50E | Type 1<br>Type 3R<br>Type 4<br>Type 4X<br>Type 12   |
| Packs of              | 2 pc(s).  |
| Net weight            | 1.6 kg  |

# Features

---

|                       |   |
|-----------------------|---|
| Gross weight          | 1.722 kg  |
| Customs tariff number | 94039910  |
| ETIM 9                | EC000721  |
| ETIM 8                | EC000721  |
| ECLASS 8.0            | 27182003  |
| Product description   | VX base/plinth trim panel, sides, H: 100 mm, for D: 500 mm, stainless steel, 1.4301 |

# Approvals

---

|           |                  |
|-----------|------------------|
| Approvals | UL + C-UL - FTTA |
|-----------|------------------|