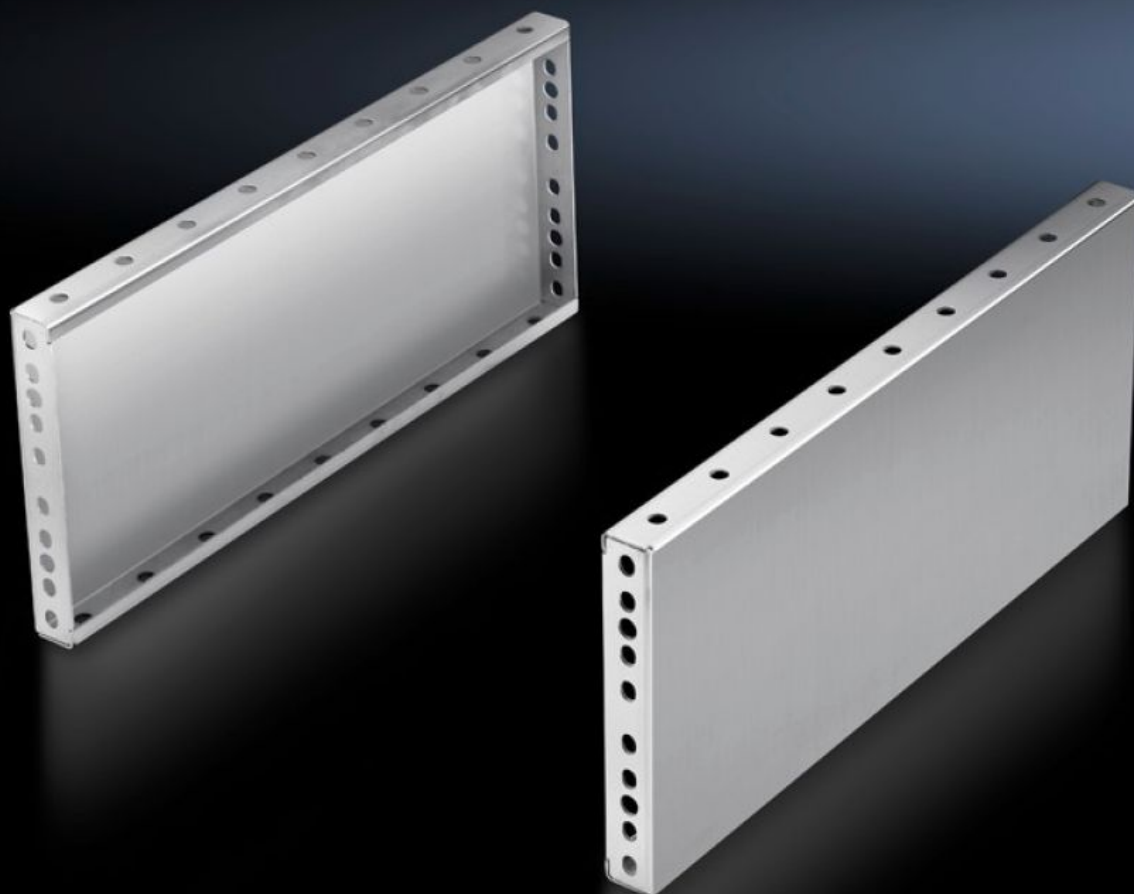


# Rittal – The System.

Faster – better – everywhere.



## TS 8702.050

## Base/plinth trim panels, side, 200 mm

State: 2025.7.14 (Source: [rittal.com/lt-en](https://www.rittal.com/lt-en))

ENCLOSURES

POWER DISTRIBUTION

CLIMATE CONTROL

IT INFRASTRUCTURE

SOFTWARE & SERVICES

FRIEDHELM LOH GROUP



# TS 8702.050 - Base/plinth trim panels, side, 200 mm

## Stainless steel for base/plinth components front and rear

For mounting between the base/plinth components. At 200 mm height, two 100 mm base/plinth trims may be used.

### Features

Model No.	TS 8702.050
Product description	For mounting between the base/plinth components. At 200 mm height, two 100 mm base/plinth trims may be used.
Material	Stainless steel 1.4301 (AISI 304)
Surface finish	Brushed, grain 400
Supply includes	2 base/plinth trim panels Assembly parts
Assembly instruction	Base/plinth trim panels, side, 100 mm, may be installed rotated through 90° to stabilise bayed base/plinth components. The base/plinth baying bracket is required for this purpose
Dimensions	Height: 200 mm
To fit	Enclosure type: TS: = 500 mm
Packs of	2 pc(s).
Net weight	3.38
Gross weight	3.56
Customs tariff number	94039910
EAN	4028177300002
ETIM 9	EC000721
ECLASS 8.0	27182003