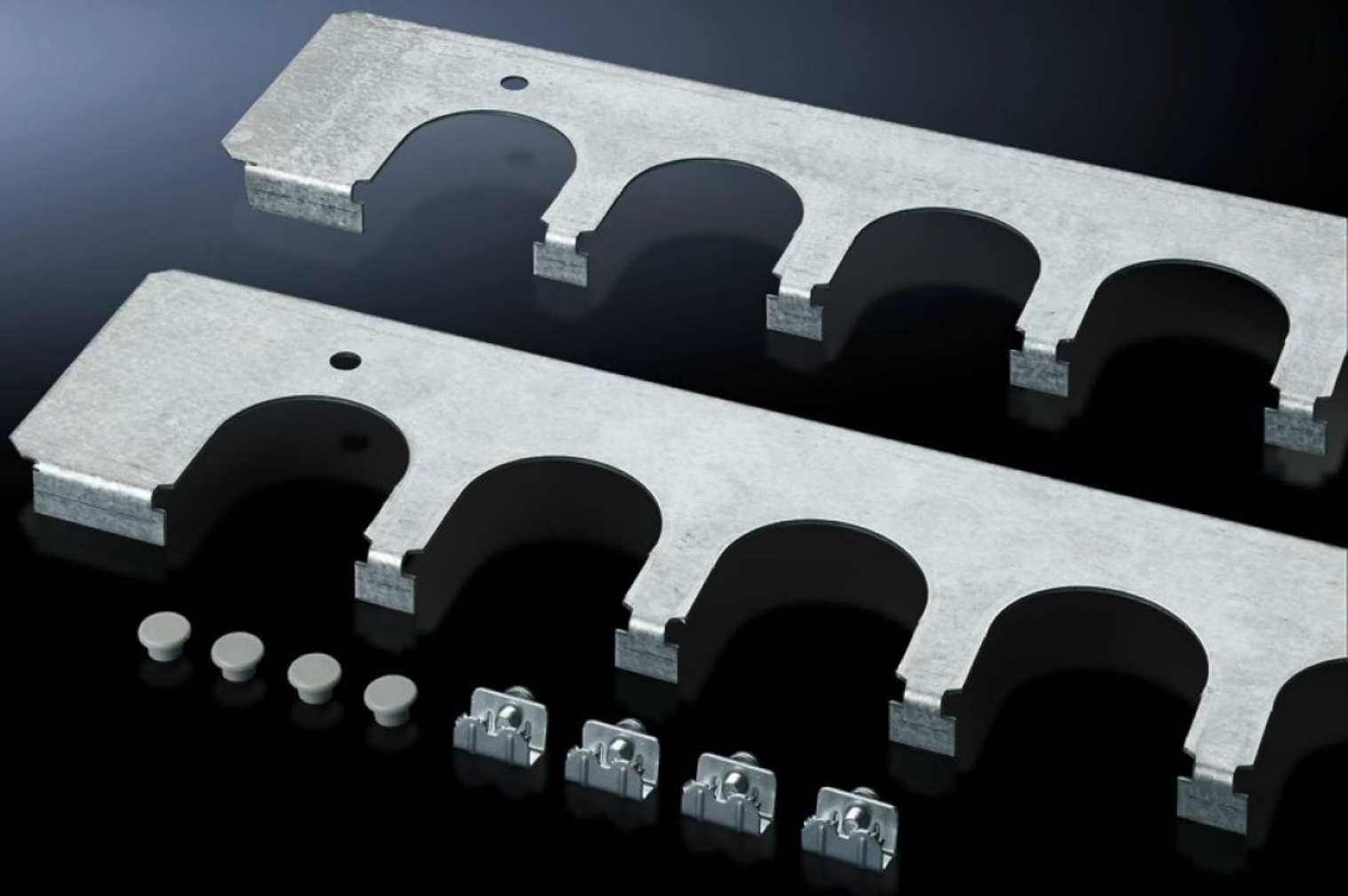


# Rittal – The System.

Faster – better – everywhere.



## SZ 8800.100 Cable entry plates

State: 2025.8.15 (Source: [rittal.com/lt-en](https://www.rittal.com/lt-en))

ENCLOSURES

POWER DISTRIBUTION

CLIMATE CONTROL

IT INFRASTRUCTURE

SOFTWARE & SERVICES

FRIEDHELM LOH GROUP



# SZ 8800.100 - Cable entry plates for installation in TS, SE and PC enclosures

Secure cable routing in conjunction with cable entry grommets, connector grommets. Fitted instead of standard gland plates.

## Features

|                       |  |
|-----------------------|--|
| Model No.             | SZ 8800.100  |
| Product description   | Secure cable routing in conjunction with cable entry grommets, connector grommets. Fitted instead of standard gland plates.  |
| Benefits              | Particularly well-suited to cables with different cross-sections<br>Thanks to the enclosure symmetry, where dimensions permit, cable entry plates may also be inserted in the enclosure depth, right and left, analogous to the gland plates |
| Material              | Sheet steel  |
| Surface finish        | Zinc-plated  |
| Supply includes       | Assembly parts   |
| Number of cut-outs    | 4  |
| To fit                | Enclosure type: TS: = 1,000 mm<br>Enclosure type: SE   |
| Packs of              | 4 pc(s).   |
| Net weight            | 1.708  |
| Gross weight          | 1.907  |
| Customs tariff number | 73269098   |
| EAN                   | 4028177212480  |
| ETIM 9                | EC002620   |
| ECLASS 8.0            | 27189261   |