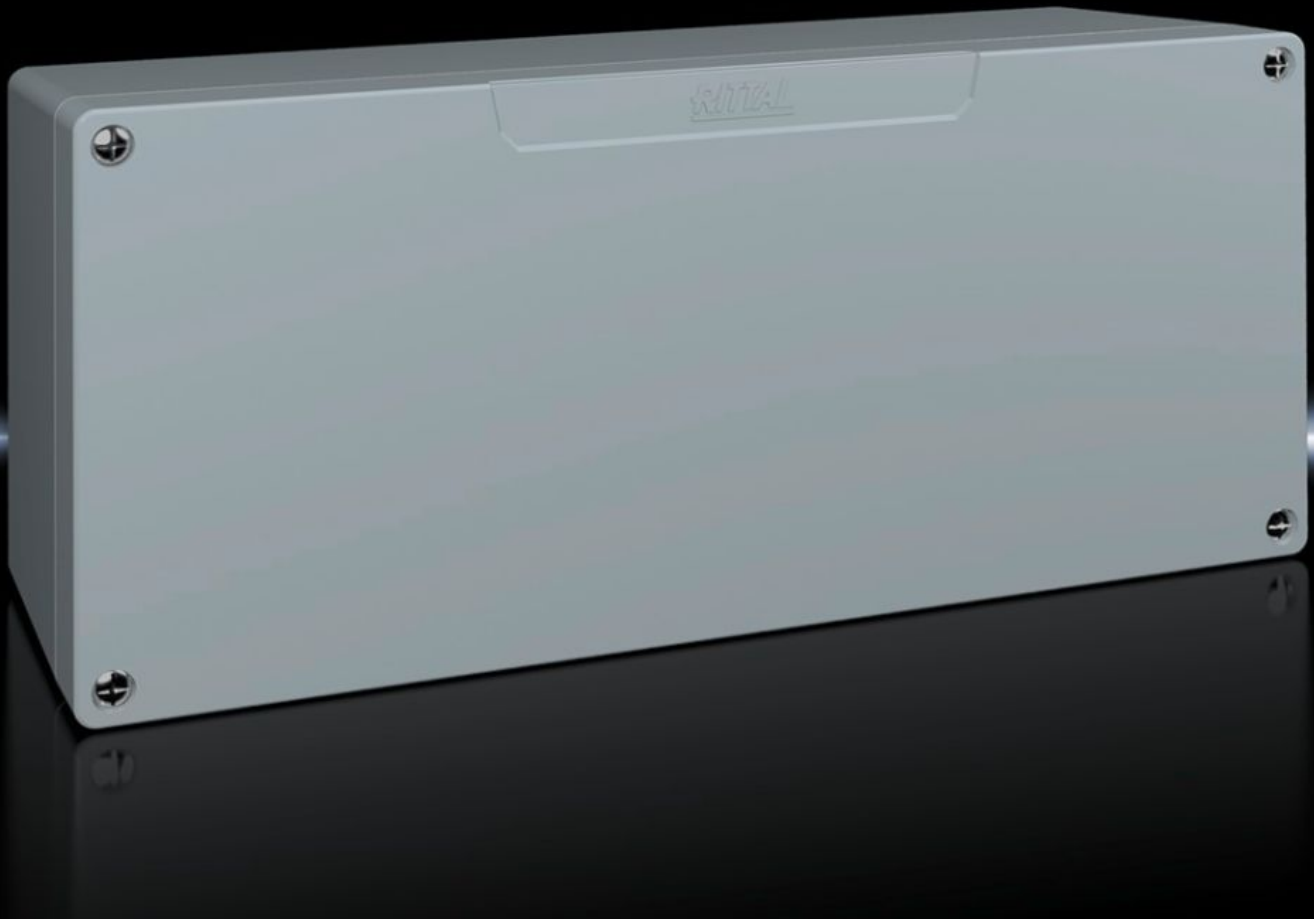


Rittal – The System.

Faster – better – everywhere.



GA 9114.210

Cast aluminium enclosures GA

State: 2025.6.4 (Source: rittal.com/lt-en)

ENCLOSURES

POWER DISTRIBUTION

CLIMATE CONTROL

IT INFRASTRUCTURE

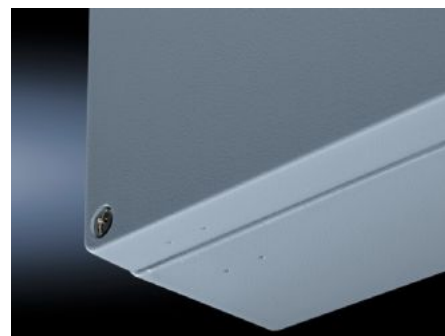
SOFTWARE & SERVICES

FRIEDHELM LOH GROUP



GA 9114.210 - Cast aluminium enclosures GA

Spray-finished cast aluminium enclosure. Protection category IP 66.



Features

| | |
|-----------------------------------|---|
| Model No. | GA 9114.210 |
| Material | Enclosure: Cast aluminium Cover: Cast aluminium, all-round CR cellular rubber cord seal |
| Surface finish | Textured paint |
| Colour | RAL 7001 |
| Supply includes | Enclosure with cover Cover screws, captive Screws for attaching support rails Screw for connection of the PE conductor |
| Protection category NEMA | NEMA 4 |
| Protection category to IEC 60 529 | IP 66 |
| IK Code | IK08 |
| Dimensions | Width: 360 mm Height: 160 mm Depth: 93 mm |
| Basic material | Cast aluminium |
| Packs of | 1 pc(s). |
| Net weight | 3.04 |

Features

| | |
|-----------------------|---------------|
| Gross weight | 3.14 |
| Customs tariff number | 84879090 |
| EAN | 4028177145450 |
| ETIM 9 | EC000261 |
| ECLASS 8.0 | 27180101 |

Approvals

| | |
|--------------|---|
| Explanations | Declaration of conformity Declaration of conformity UK |
|--------------|---|