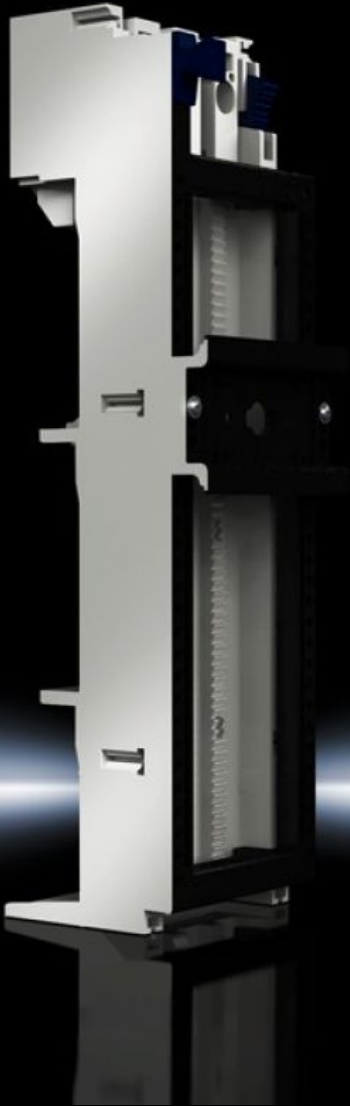


# Rittal – The System.

Faster – better – everywhere.



## SV 9340.660 OM adaptors

State: 2026.6.7 (Source: [rittal.com/lt-en](http://rittal.com/lt-en))

ENCLOSURES

POWER DISTRIBUTION

CLIMATE CONTROL

IT INFRASTRUCTURE

SOFTWARE & SERVICES

FRIEDHELM LOH GROUP



# SV 9340.660 - OM adaptors with spring terminals



## Features

|   |  |
|---|--|
| Model No.                                     | SV 9340.660  |
| Design  | with spring terminals                                  |
| Material                                      | Polyamide<br>Fire protection corresponding to UL 94-V0 |
| Colour  | Chassis: RAL 7035                                      |
| Rated current max.                            | 32 A   |
| Rated operating voltage                       | 690 V, 3~  |
| For bar systems with centre-to-centre spacing | 60 mm  |
| Support rail type                             | Support frame, 1 x TS 55D                              |
| Number of poles                               | 3-pole   |
| Dimensions                                    | Width: 55 mm<br>Height: 208 mm                         |
| Connection of round conductors                | 1.5 - 6 mm <sup>2</sup>                                |
| Support rails Qty/height                      | 1 / 10 mm  |
| To fit busbars                                | Height: 5, 10 mm                                       |
| Support frame (W x H)                         | 55 mm x 170 mm   |
| Packs of                                      | 1 pc(s).   |
| Net weight                                    | 0.29 kg  |

# Features

---

|                              |  |
|------------------------------|--|
| Gross weight                 | 0.315 kg   |
| Copper weight (kg per piece) | 0.027  |
| Customs tariff number        | 85369095   |
| ETIM 9                       | EC001531   |
| ECLASS 8.0                   | 27370304   |
| Product description          | SV OM adaptor, 32 A, 690 V, 3-pole, tension spring clamp 1,5-6 mm <sup>2</sup> , WH: 55x208 mm, support frame, support rail TS 45D |

# Approvals

---

|              |   |
|--------------|---|
| Approvals    | ABS<br>DNV<br>Lloyds Register                             |
| Explanations | Declaration of conformity<br>Declaration of conformity UK |

# Tender text

OM adaptor 32 A  
OM adaptor 32 A with tension spring clamp, 3-pole,  
for busbar thickness 5/10 mm and PLS 800/1600  
Technical specifications  
Construction width: 55 mm  
Length: 208 mm  
Support frame: 55 x 170 mm  
Support frame support: -  
PinBlock: -  
Connector outlet: -  
Support rail: 1  
System:  
Rittal RiLine60