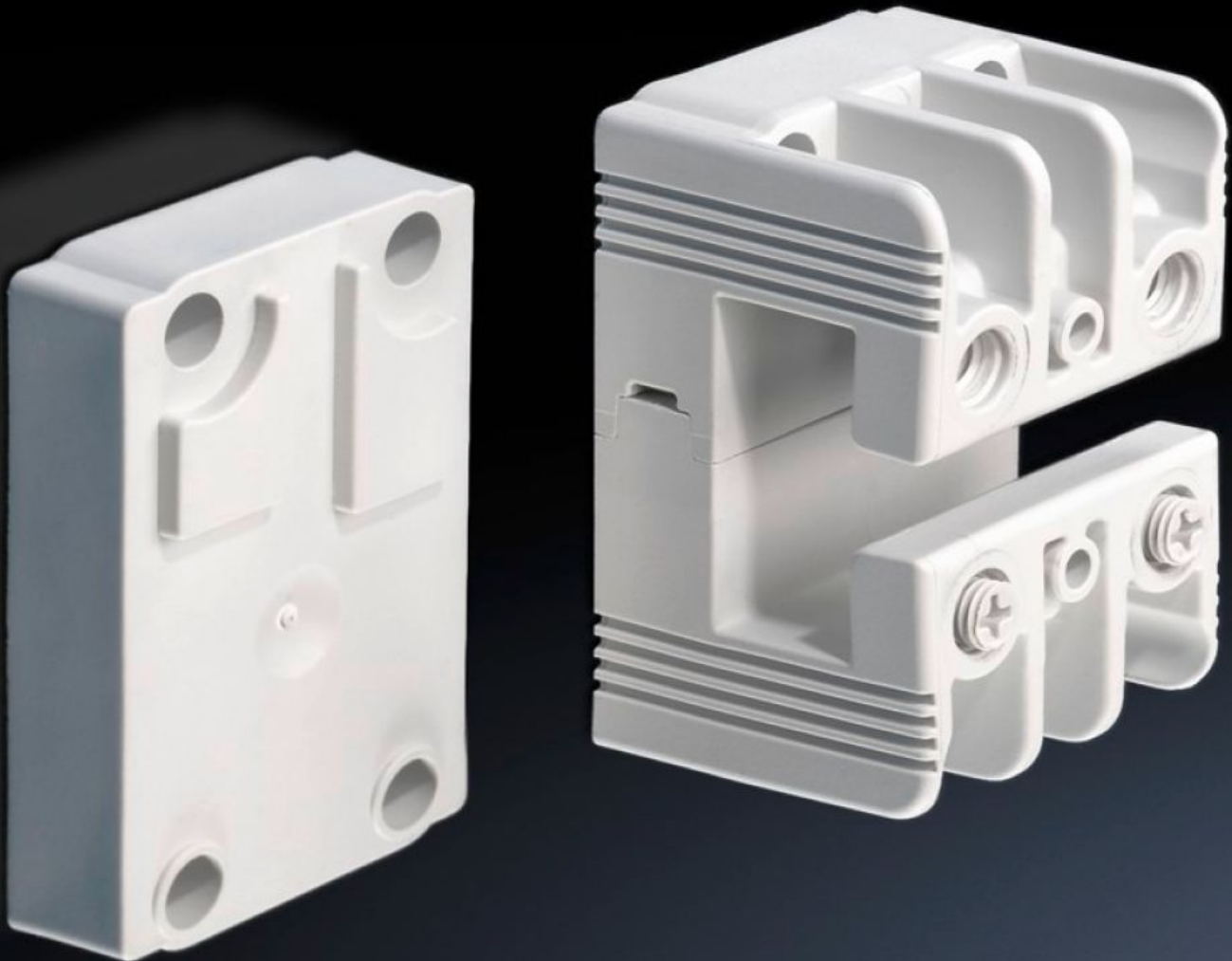


Rittal – The System.

Faster – better – everywhere.



SV 9342.030 Busbar support

State: 2026.4.8 (Source: rittal.com/lt-en)

ENCLOSURES

POWER DISTRIBUTION

CLIMATE CONTROL

IT INFRASTRUCTURE

SOFTWARE & SERVICES

FRIEDHELM LOH GROUP



SV 9342.030 - Busbar support 1-pole



Features

Model No.	SV 9342.030
Material	Polyamide Fire protection corresponding to UL 94-V0
Colour	RAL 7035
Supply includes	Including raised section for stepped configuration of the PLS busbars
To fit busbars	PLS 1600
Number of poles	Single-pole
Note	Multi-pole systems with 60 mm bar centre distance may be configured by buying the busbar supports Support suitable for AC and DC applications.
Rated operating voltage	1000 V AC 1500 V DC
PEN/N/PE support	Yes
Packs of	4 pc(s).
Net weight	0.28 kg
Gross weight	0.306 kg
Customs tariff number	85469010
ETIM 9	EC001166
ECLASS 8.0	27400607

Features

Product description	SV Busbar support, PLS 1600, 1-pole
---------------------	-------------------------------------

Approvals

Approvals	ABS Lloyds Register of Shipping UL + C-UL (listed)
-----------	--

Explanations	Declaration of conformity
--------------	---------------------------

Tender text

PLS 1600 busbar support 1-pole
PLS 1600 busbar support with fastening attachment,
1-pole
Technical specifications
Bar centre distance: 60 mm
E-Cu busbar :PLS 1600
Construction width: 40 mm
Length: 60 mm
Tightening torque
Assembly screw: 3 - 5 Nm
Lid attachment: 0.7 Nm
System
Rittal RiLine60