

Rittal – The System.

Faster – better – everywhere.



RX 9365.725

RiLineX support rail for component adaptor

State: 2026.5.25 (Source: rittal.com/lt-en)

ENCLOSURES

POWER DISTRIBUTION

CLIMATE CONTROL

IT INFRASTRUCTURE

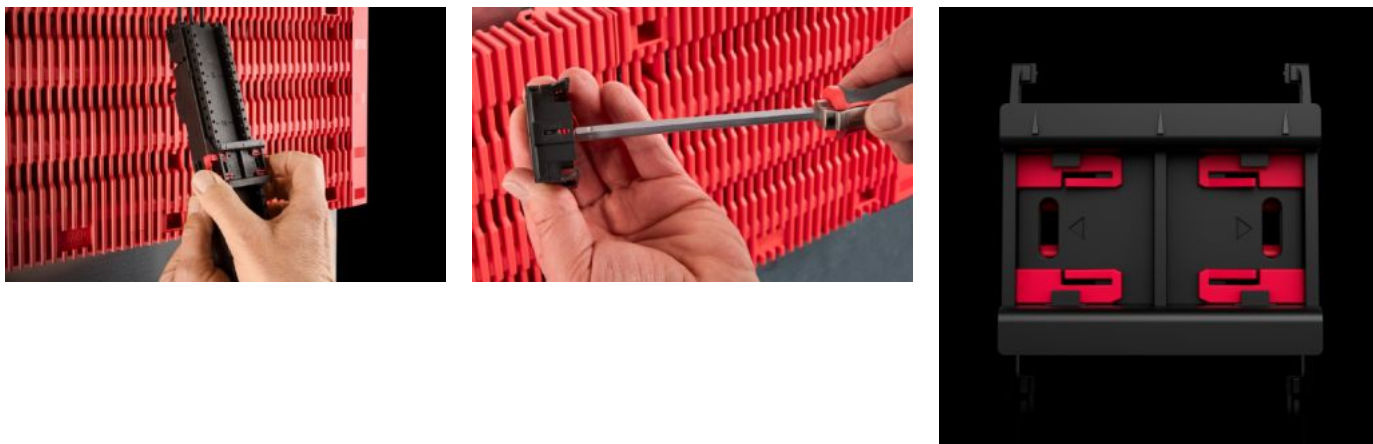
SOFTWARE & SERVICES

FRIEDHELM LOH GROUP



RX 9365.725 - RiLineX support rail for component adaptor

RiLineX support rails for component adaptors in width 54 mm for 60 mm busbar systems. For mounting top-mounted equipment with snap fastening on component adaptors and component supports.



Features

Model No.	RX 9365.725
Design	with locking clip
Material	Polyamide (PA 6) Fire protection corresponding to UL 94
Colour	RAL 9005 RAL 35745
To fit Model No.	9360740 9360760 9360780
Dimensions	Width: 54 mm Height: 10 mm
Packs of	8 pc(s).
Net weight	0.08 kg
Gross weight	0.107 kg
PCF per pack (cradle-to-gate)	0.53
Customs tariff number	39269097

Features

ETIM 9

EC001285

Product description

RiLineX support rails for component adaptors in width 54 mm for 60 mm busbar systems. For mounting top-mounted equipment with snap fastening on component adaptors and component supports.

Approvals

Explanations

Declaration of conformity
PCF-declaration