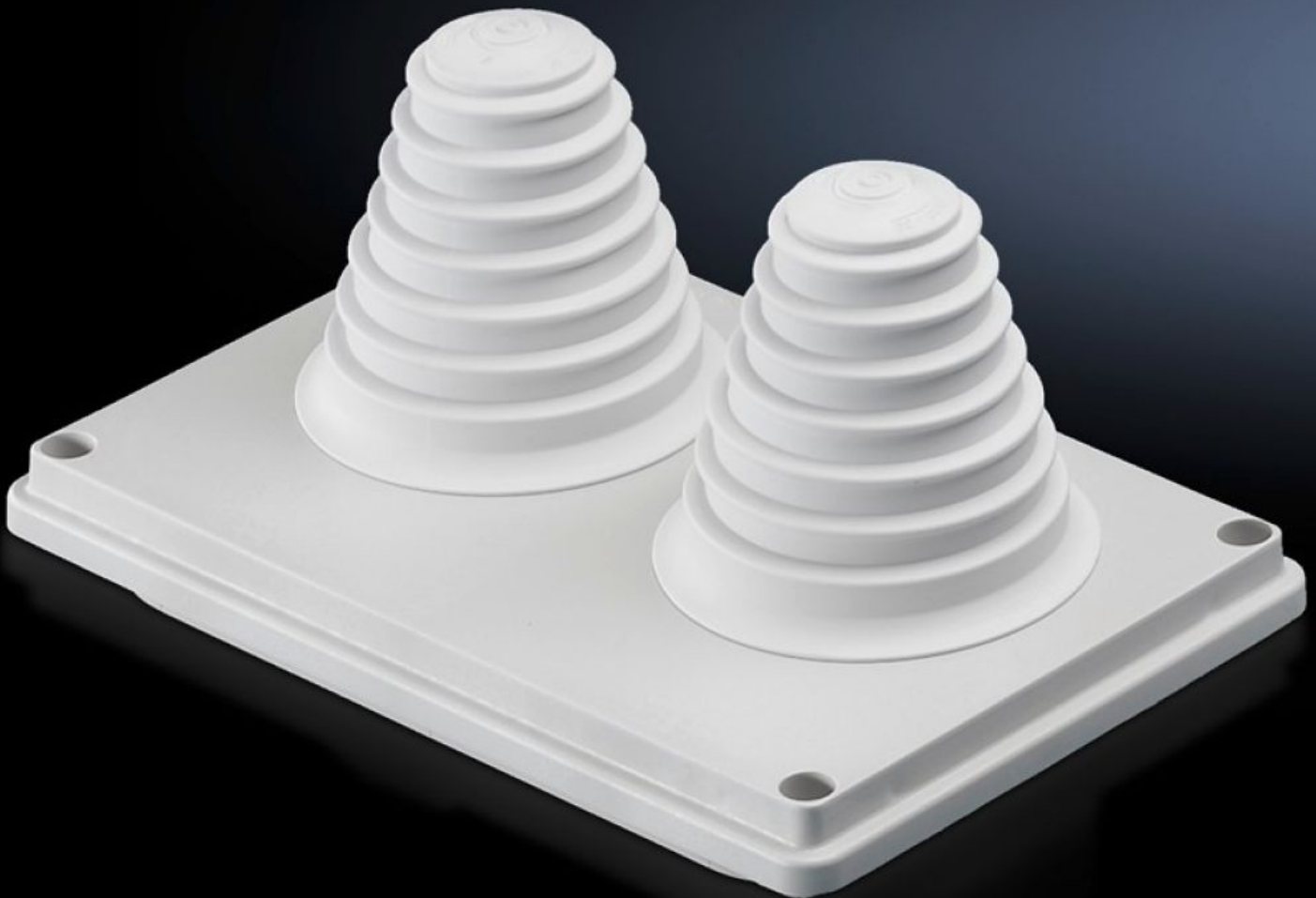


Rittal – The System.

Faster – better – everywhere.



SV 9665.780

Cable entry gland

State: 2026.7.10 (Source: rittal.com/lt-en)

ENCLOSURES

POWER DISTRIBUTION

CLIMATE CONTROL

IT INFRASTRUCTURE

SOFTWARE & SERVICES

FRIEDHELM LOH GROUP



SV 9665.780 - Cable entry gland for roof plate

Cable entry glands for roof plates, with metric knockouts, sealing membranes, entry glands, or sealed.



Features

Model No.	SV 9665.780
Design	with entry fittings up to Ø 66 mm
Product description	For simple, secure cable entry in the roof zone.
Material	Insulating material
Colour	RAL 7035
Supply includes	Seal included
Dimensions	Width: 250 mm Depth: 160 mm
IP protection category to IEC 60529	IP 55
Packs of	1 pc(s).
Net weight	0.38 kg
Gross weight	0.39 kg
Customs tariff number	39269097
ETIM 9	EC000211
ECLASS 8.0	27142421
Product description	SV Cable entry gland, with entry glands up to Ø 66 mm, insulating material