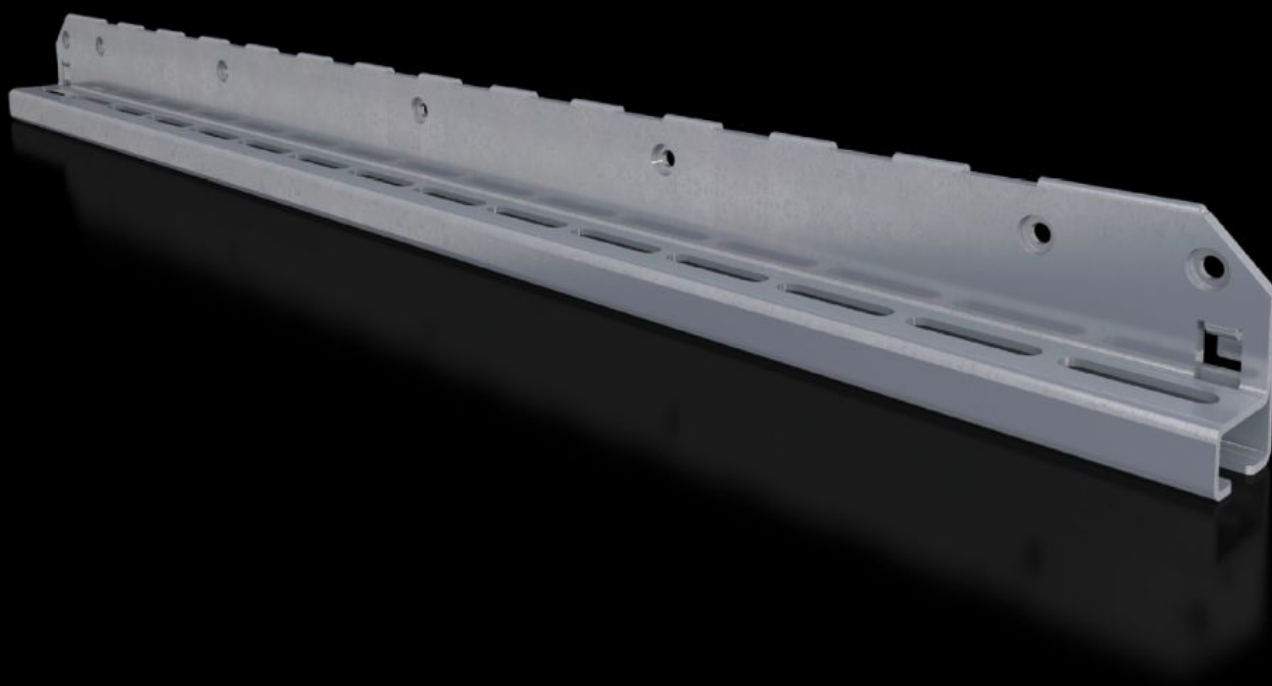


# Rittal – The System.

Faster – better – everywhere.



## SV 9683.328

### Mounting bracket

State: 2025.8.19 (Source: [rittal.com/lt-en](https://www.rittal.com/lt-en))

ENCLOSURES

POWER DISTRIBUTION

CLIMATE CONTROL

IT INFRASTRUCTURE

SOFTWARE & SERVICES

FRIEDHELM LOH GROUP



# SV 9683.328 - Mounting bracket for air circuit-breaker support rail

For attaching the air circuit-breaker support rail.

## Features

Model No.	SV 9683.328
Product description	For attaching the air circuit-breaker support rail to the enclosure section or compartment side panel.
Material	Sheet steel, 2.5 mm
Surface finish	Zinc-plated
Supply includes	Assembly parts
To fit	Depth: = 800 mm
Packs of	2 pc(s).
Net weight	4.7
Gross weight	4.98
PCF per pack (cradle-to-gate)	19 kg CO2 eq (Cat B)
Note on PCF category	Category B: PCF value (cradle-to-gate) based on the product weight, approximately calculated and self-declared
Customs tariff number	73182900
EAN	4028177937505
ETIM 9	EC002270
ECLASS 8.0	27400613

## Approvals

Explanations	Declaration of conformity UK
--------------	------------------------------