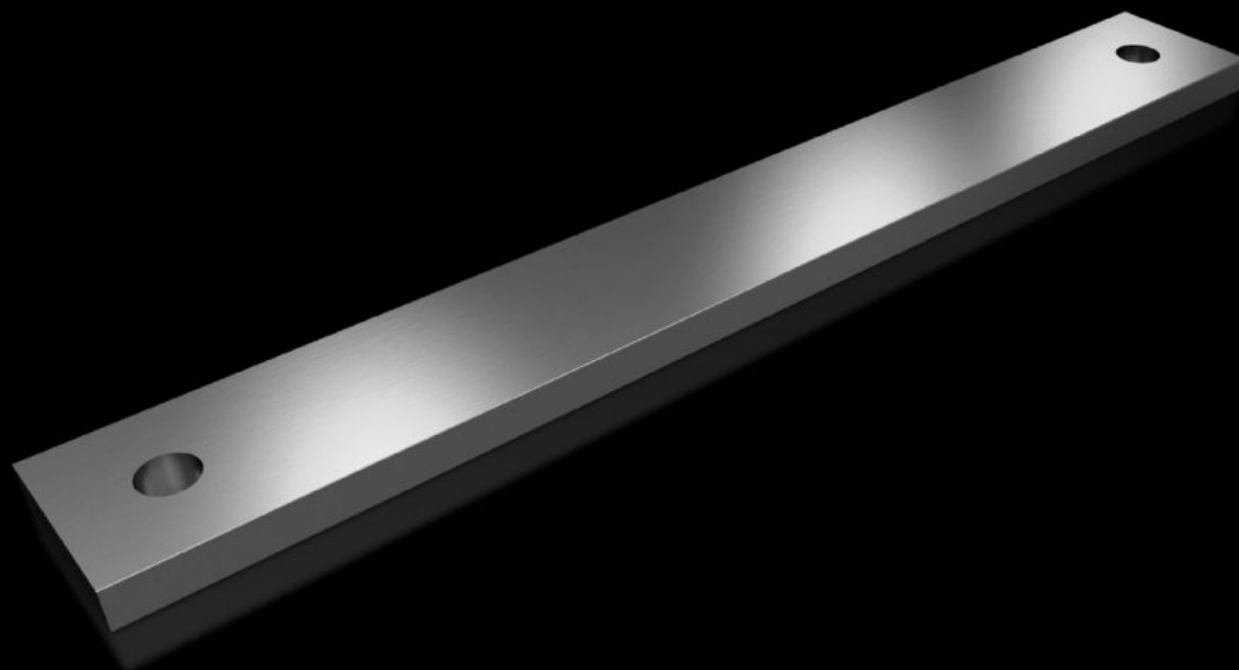


# Rittal – The System.

Faster – better – everywhere.



## SV 9685.544

## PE/PEN-railkoper E-Cu, vertind

Staat: 13-5-2026 (Bron: [rittal.com/nl-nl](http://rittal.com/nl-nl))

ENCLOSURES

POWER DISTRIBUTION

CLIMATE CONTROL

IT INFRASTRUCTURE

SOFTWARE & SERVICES

FRIEDHELM LOH GROUP



# SV 9685.544 - PE/PEN-railkoper E-Cu, vertind

Met geïntegreerde boringen.

## Funcities

Bestelnr.	SV 9685.544
Materiaal	E-Cu, vertind
Afmetingen	Lengte: 300 mm
Doorsnede	40 mm x 10 mm
Leveringseenheid	2 st.
Nettogewicht	2,1 kg
Brutogewicht	2,12 kg
Koperaandeel (kg / stuk)	1,07
Douanetariefnummer	74071000
Product omschrijving	SV PE/PEN-railkoper E-Cu vertind, BH: 40x10 mm, L: 300 mm