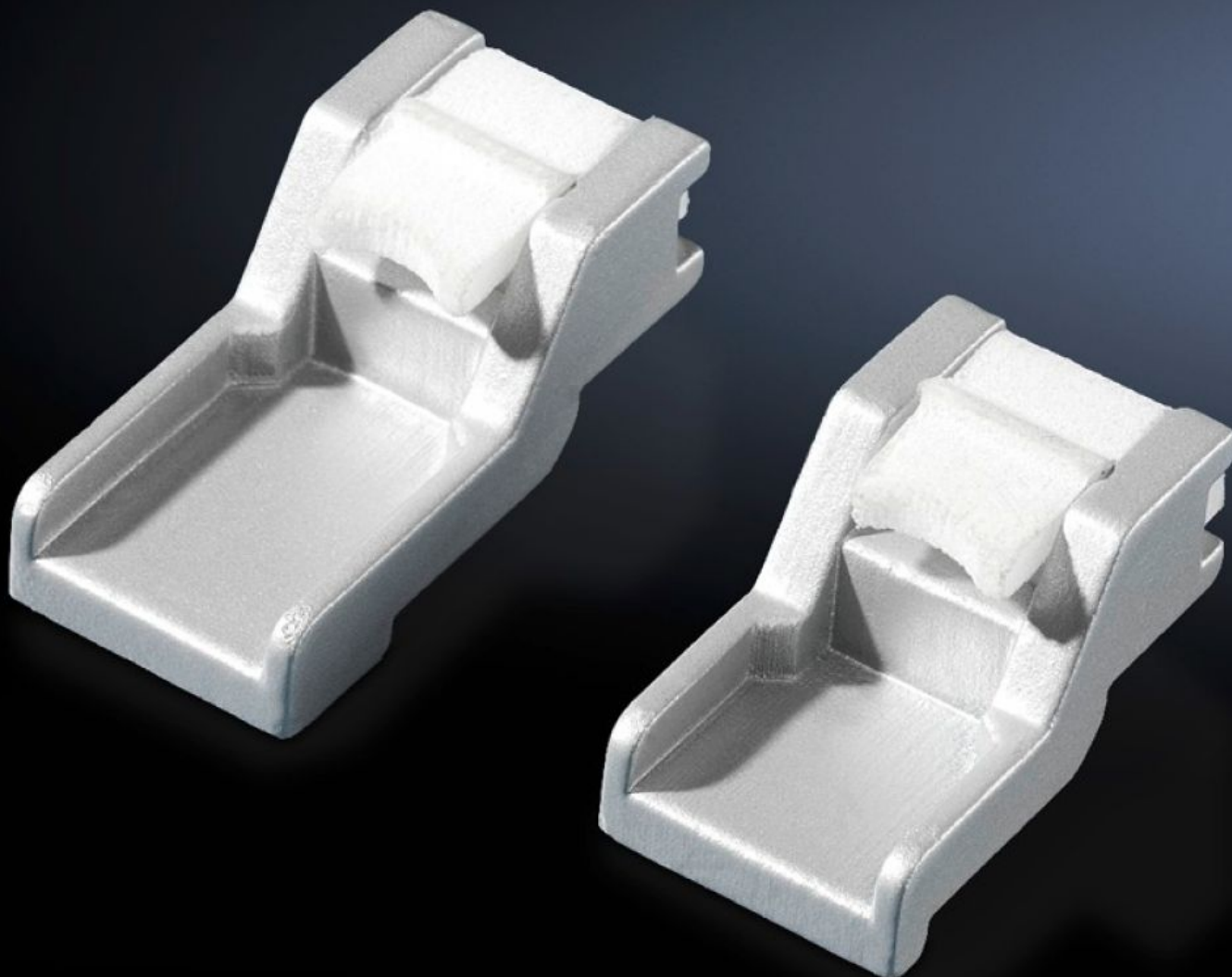


Rittal – The System.

Faster – better – everywhere.



CP 6053.300 Monteringssett

Stat: 11.07.2026 (Kilde: rittal.com/no-no)

ENCLOSURES

POWER DISTRIBUTION

CLIMATE CONTROL

IT INFRASTRUCTURE

SOFTWARE & SERVICES

FRIEDHELM LOH GROUP



CP 6053.300 - Monteringssett for komfortpanel

For montering av alu-frontplater, betjeningspaneler og tastaturer.

Funksjoner

Art.nr	CP 6053.300
Utførelse	For skruetvinge
Produktbeskrivelse	For montering av alu-frontplater, betjeningspaneler og tastaturer.
Leveringsomfang	8 middels lange holdeklør, 8 korte holdeklør, 4 lange holdeklør.
Direct Integration	Siemens Sinumerik: OP 010, OP 010 C, OP 012, TP 012, OP 015, OP 015 A, MCP 483 C, MCP 483, PP 012, PP 012 utvidelse, MCP, KB 483 C, Querty 19" Siemens Simatic: TP 900 Comfort, KP 900 Comfort, TP 1200 Comfort, KTP 1000 Basic, KTP 1500 Basic Panel PC 477C, 577C, 677C: 12,1"-Key, 12,1"-Touch, 15,1"-Key, 15,1"-Touch, 19"-Touch , 22"-Touch (Det trengs 2 VE-er) MP 377 12" Touch, MP 377 15" Touch, MP 377 19" Touch Industrial Flat Panel: IFP 1200 Touch, IFP 1500 Touch, IFP 1200 Key, IFP 1500 Key, IFP 1900 Touch, IFP 2200 Touch Industrial Thin Client: ITC 1200, ITC 1500, ITC 1900, ITC 2200 B & R: Automation Panel, Panel PC
Pakkeenhet	1 stk.
Nettovekt	0,28 kg
Bruttovekt	0,285 kg
Tolltariffnummer	79070000
ETIM 9	EC002625
ECLASS 8.0	27189234
Produktbeskrivelse	CP Montasjesett, for komfortpanel, for skruetvinge