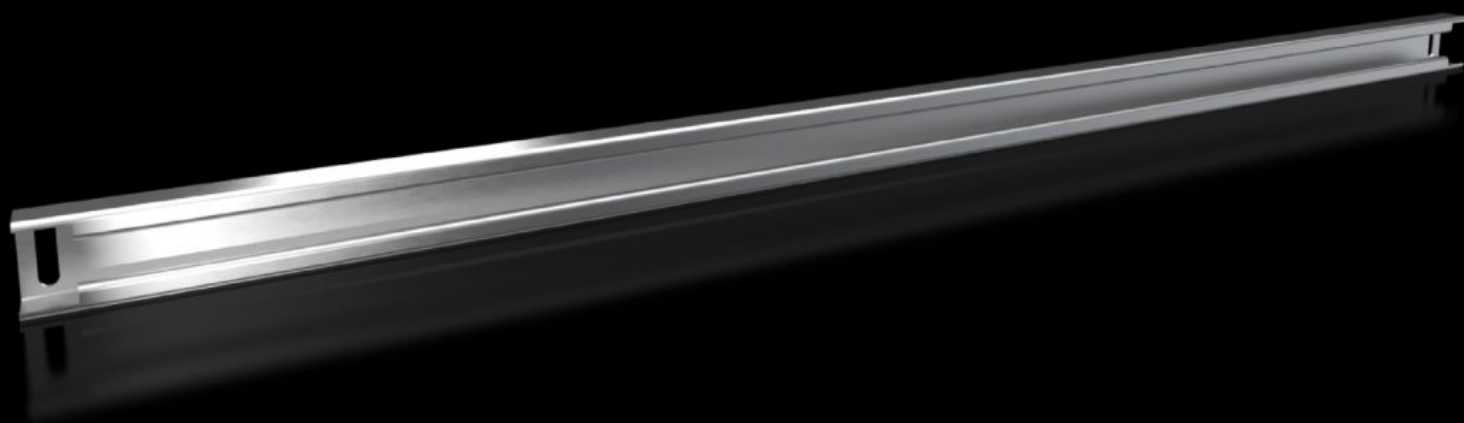
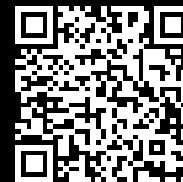


Rittal – The System.

Faster – better – everywhere.



VX 8617.830

DIN-skinne 48 x 26 mm

Stat: 07.07.2026 (Kilde: rittal.com/no-no)

ENCLOSURES

POWER DISTRIBUTION

CLIMATE CONTROL

IT INFRASTRUCTURE

SOFTWARE & SERVICES

FRIEDHELM LOH GROUP



VX 8617.830 - DIN-skinne 48 x 26 mm for VX, VX SE, PC, IW, AX

For tunge komponenter som f.eks. transformatorer. T-hodeskrue og avlange hull i bæreskinnen gir mulighet for alle typer montering.



Funksjoner

Art.nr	VX 8617.830
Produktbeskrivelse	
Materiale	Stålplate
Overflate	Forsinket
Leveringsomfang	Inkl. festemateriell
Monteringsmuligheter VX	In enclosure width 1200 mm, on the inner mounting level and in the base
Montasjemuligheter VX SE	In enclosure width 1200 mm, on the inner mounting level, in conjunction with adaptor rail for VX compatibility and in the base
Monteringsmuligheter AX	I skapbredde 1200 mm, i forbindelse med skinne for innvendig utbygging av AX og bunnutbyggingsskinne for AX
Monteringsmuligheter PC	In enclosure width 1200 mm, on the inner mounting level, in conjunction with adaptor rail for VX compatibility and in the base
Monteringsmuligheter IW	In enclosure width 1200 mm, on the inner mounting level, in conjunction with adaptor rail for VX compatibility and in the base

Funksjoner

Passer for	Kapslingstype: VX VX SE PC IW AX Styrepult CX CX pultunderdel Bredde: = 1.200 mm
Pakkeenhet	2 stk.
Nettovekt	5,6 kg
Bruttovekt	5,95 kg
PCF/VE (Cradle-to-Gate)	25,12
Tolltariffnummer	73269098
ETIM 9	EC001285
ECLASS 8.0	27189261
Produktbeskrivelse	VX bæreskinne 48 x 26 mm, for B: 1200 mm

Godkjenninger

Forklaringer	PCF-declaration
--------------	-----------------