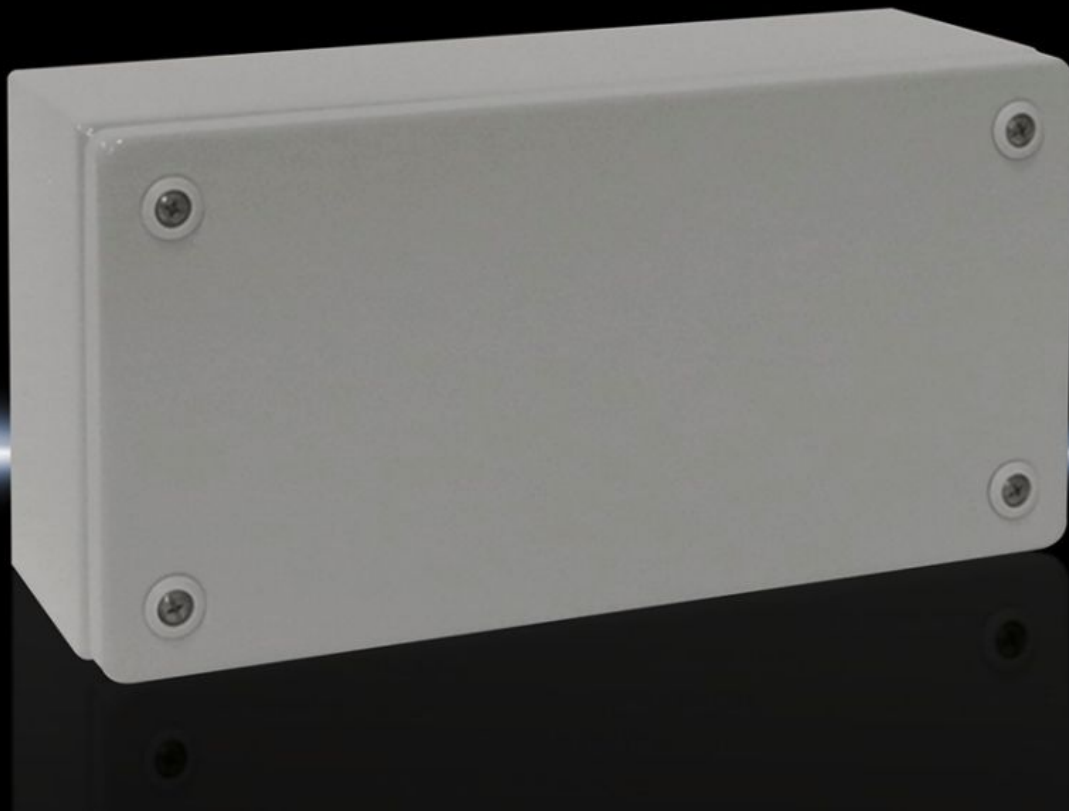


Rittal – The System.

Faster – better – everywhere.



KL 1501.510 Terminal boxes KL

State: 13/05/2026 (Source: rittal.com/nz-en)

ENCLOSURES

POWER DISTRIBUTION

CLIMATE CONTROL

IT INFRASTRUCTURE

SOFTWARE & SERVICES

FRIEDHELM LOH GROUP



KL 1501.510 - Terminal boxes KL without gland plate

Spray-finished enclosure with sheet steel cover, without gland plate Protection category IP 66.

Features

Model No.	KL 1501.510
Material	Enclosure: Sheet steel Cover: Sheet steel, all-round foamed-in PU seal
Surface finish	Enclosure and cover: Dipcoat primed, powder-coated on the outside, textured paint
Colour	RAL 7035
Supply includes	Enclosure with cover Quick-release fastener including plastic bushes
Protection category NEMA	NEMA 4
Protection category to IEC 60 529	IP 66
IK Code	IK08
Dimensions	Width: 300 mm Height: 150 mm Depth: 120 mm
Material thickness - cover	1.25 mm
Material thickness - enclosure	1.25 mm
Basic material	Sheet steel
Packs of	1 pc(s).
Net weight	2.23 kg
Gross weight	2.38 kg
Customs tariff number	73269098
ETIM 9	EC000261
ETIM 8	EC000261
ECLASS 8.0	27180101

Features

Product description	KL Terminal box, WHD: 300x150x120 mm, Sheet steel, without mounting plate, with cover, without gland plate
---------------------	------------------------------------------------------------------------------------------------------------

Approvals

Approvals	Bureau Veritas DNV Lloyds Register UL + C-UL (listed)
-----------	----------------------------------------------------------------

Explanations	Manufacturer's declaration Declaration of conformity UK
--------------	------------------------------------------------------------

Tender text

Terminal box without gland plate (120 mm deep),
protection category IP 66

Enclosure:

Robust steel sheet construction, body made from a single folded and welded piece with protection channel around the cover opening; rear panel with counter-sunk holes for wall mounting brackets; steel sheet cover, flush-mounted with highly elastic, foamed-in special seal, with PE conductor connections in the cover and enclosure; with transverse strips fitted on both sides, mounting holes, special plastic bushes for captive cover screws and also used as screwdriver guides.

Accessories:

Enclosure quick-release fastener, cover retainer,
plastic cable gland plate, cover hinges, mounting plate

Surface finish:

Panels cleaned, degreased, phosphated, electrophoretic dipcoat primed and powder-coated with polyester powder in textured RAL 7035.

Dimensions (W x H x D): 300 x 150 x 120 mm