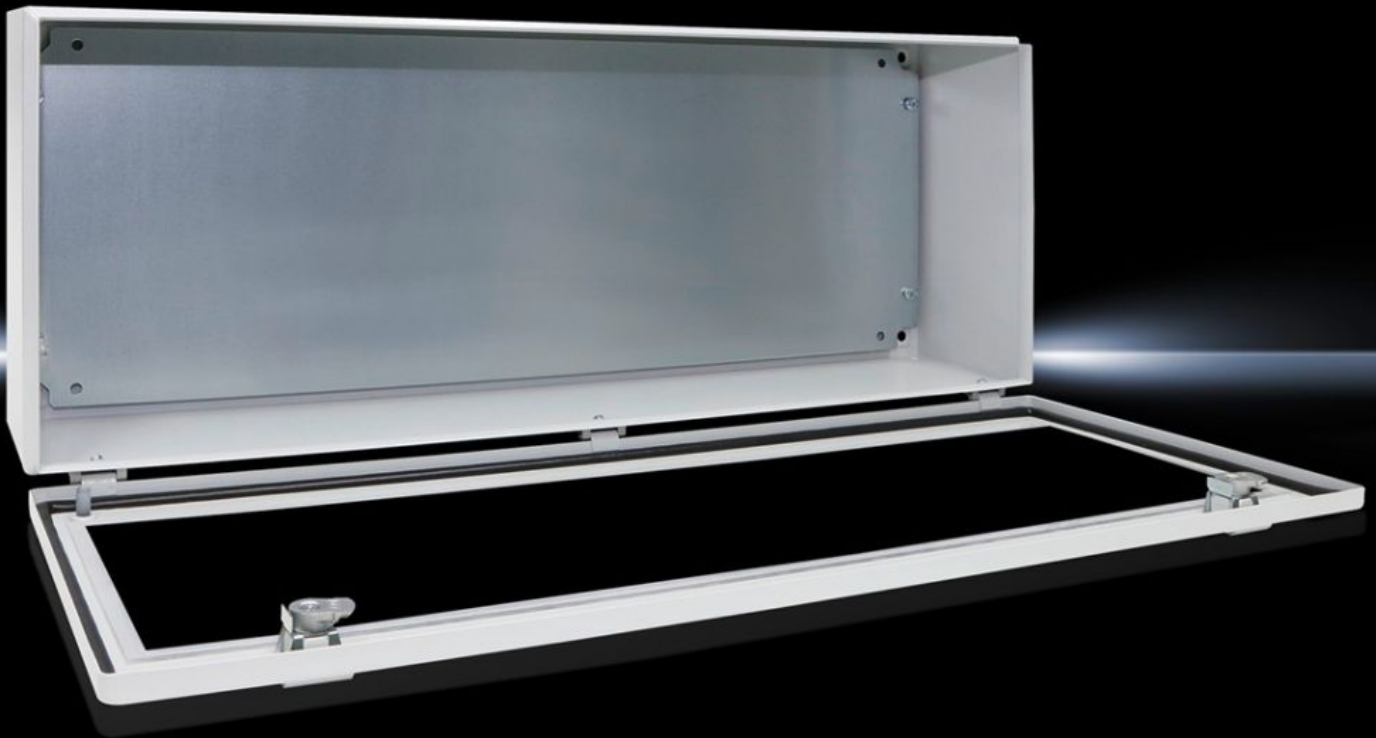


Rittal – The System.

Faster – better – everywhere.



BG 1579.530 Bus enclosures BG

State: 6/04/2026 (Source: rittal.com/nz-en)

ENCLOSURES

POWER DISTRIBUTION

CLIMATE CONTROL

IT INFRASTRUCTURE

SOFTWARE & SERVICES

FRIEDHELM LOH GROUP



BG 1579.530 - Bus enclosures BG

Wall-mounted enclosure with door of sheet steel, with polycarbonate viewing window. Protection category IP 65. Bus modules of virtually all makes may be attached.

Features

Model No.	BG 1579.530
Material	Enclosure: Sheet steel Door: Sheet steel Viewing window: Polycarbonate, 4 mm
Surface finish	Enclosure and door: Dipcoat primed, powder-coated on the outside, textured paint
Colour	RAL 7035
Supply includes	Enclosure with door Viewing window in the door Mounting plate
Protection category NEMA	NEMA 12
Protection category to IEC 60 529	IP 65
IK Code	IK08
Dimensions	Width: 800 mm Height: 300 mm Depth: 155 mm
Dimensions mounting plate (W x H)	785 mm x 275 mm
Visible area	Viewing window width: 740 mm Viewing window height: 190 mm Distance bottom edge of window - bottom edge of door: 42 mm
Material thickness - enclosure	1.38 mm
Material thickness - door	1.25 mm
Door hinge position	bottom

Features

Lock	Lock version: Cam Number of locks: 2 Lock insert: 3 mm double-bit
Basic material	Sheet steel
Packs of	1 pc(s).
Net weight	12.145 kg
Gross weight	12.784 kg
Customs tariff number	94032080
ECLASS 8.0	27180101
Product description	BG Bus enclosures, WHD: 800x300x155 mm, sheet steel, with solid base and mounting plate, Door with viewing window, hinged at bottom

Approvals

Approvals	UL + C-UL (listed)
Explanations	Declaration of conformity