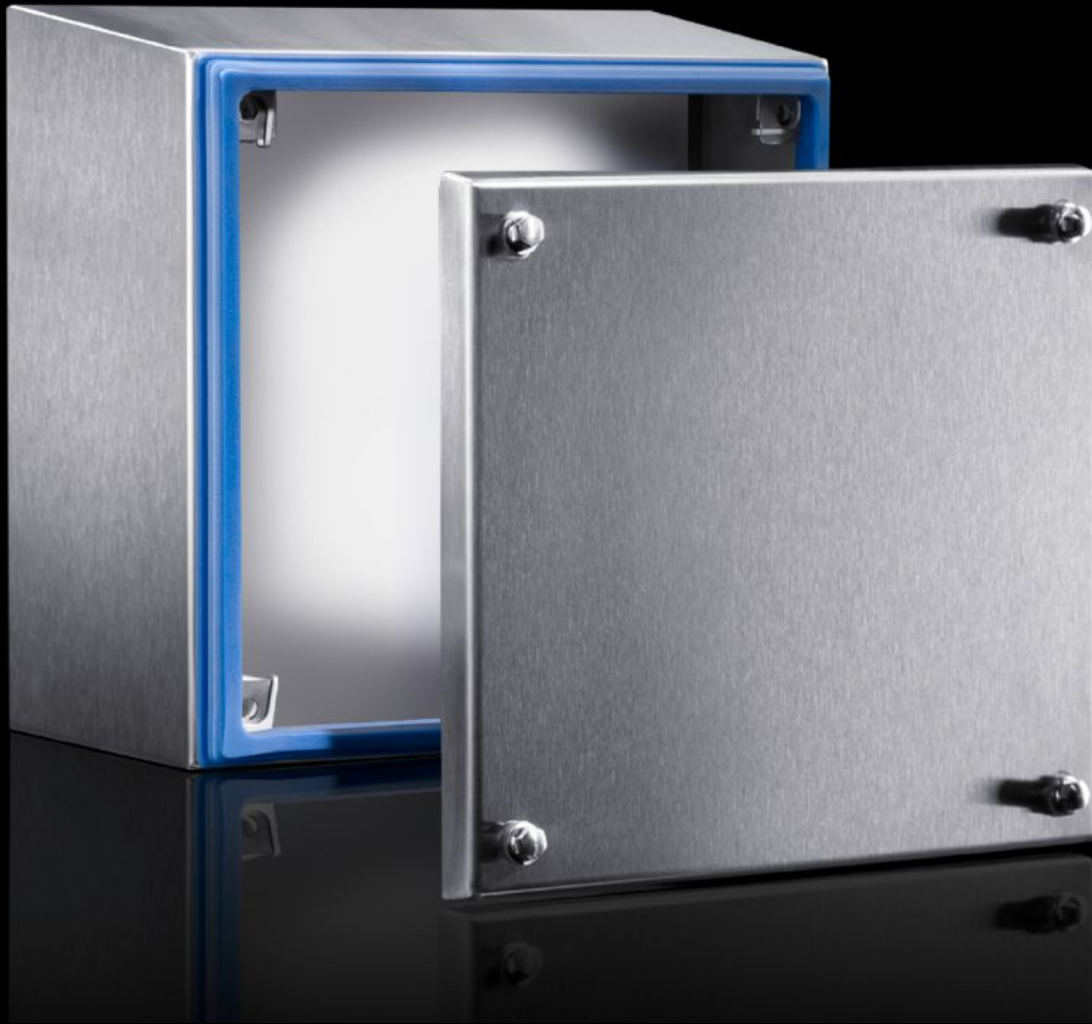


Rittal – The System.

Faster – better – everywhere.



HD 1672.600 Terminal box HD

State: 11/05/2026 (Source: rittal.com/nz-en)

ENCLOSURES

POWER DISTRIBUTION

CLIMATE CONTROL

IT INFRASTRUCTURE

SOFTWARE & SERVICES

FRIEDHELM LOH GROUP



HD 1672.600 - Terminal box HD

Enclosure solution tailored to the requirements of the food and beverage industry. All-round gap-free silicone seal between enclosure and cover. Hygiene-compliant quick-release hexagon fastener



Features

Model No.	HD 1672.600
Design	Hygienic Design enclosure
Material	Enclosure and cover: Stainless steel 1.4301 (AISI 304) 1.5 mm Mounting bracket: Sheet steel, zinc-plated, passivated, 2.0 mm Screw plug: Stainless steel Seal: Silicone, compliant with FDA Guideline 21 CFR 177.2600
Surface finish	Enclosure and cover: Brushed, grain 400, peak-to-valley height < 0.8 µm Seal: Blue, dyed (RAL 5010)
Supply includes	Enclosure of all-round solid construction Cover Mounting bracket (pre-assembled) Seal and screw plug (supplied loose)
Dimensions	Width front: 200 mm Width (rear): 227 mm Height, front: 200 mm Height rear: 227 mm Depth: 120 mm
IK Code	IK08

Features

Basic material	Stainless steel 1.4301 (AISI 304)
IP protection category to IEC 60529	IP 66 IP X9
Protection category NEMA	NEMA 1 NEMA 3 NEMA 3X NEMA 4 NEMA 4X NEMA 12 NEMA 13
Type rating to UL 50E	Type 1 Type 3 Type 3X Type 4 Type 4X Type 12 Type 13
Packs of	1 pc(s).
Net weight	2.837 kg
Gross weight	2.94 kg
Customs tariff number	84879090
ETIM 9	EC002713
ETIM 8	EC002713
ECLASS 8.0	27180101
Product description	HD Terminal box, WHD: 200x200x120 mm, Stainless steel 1.4301, with cover and silicone seal

Approvals

Approvals	UL + C-UL (listed)
-----------	--------------------

Approvals

Explanations

Declaration of conformity

Declaration of conformity UK

PCF-declaration