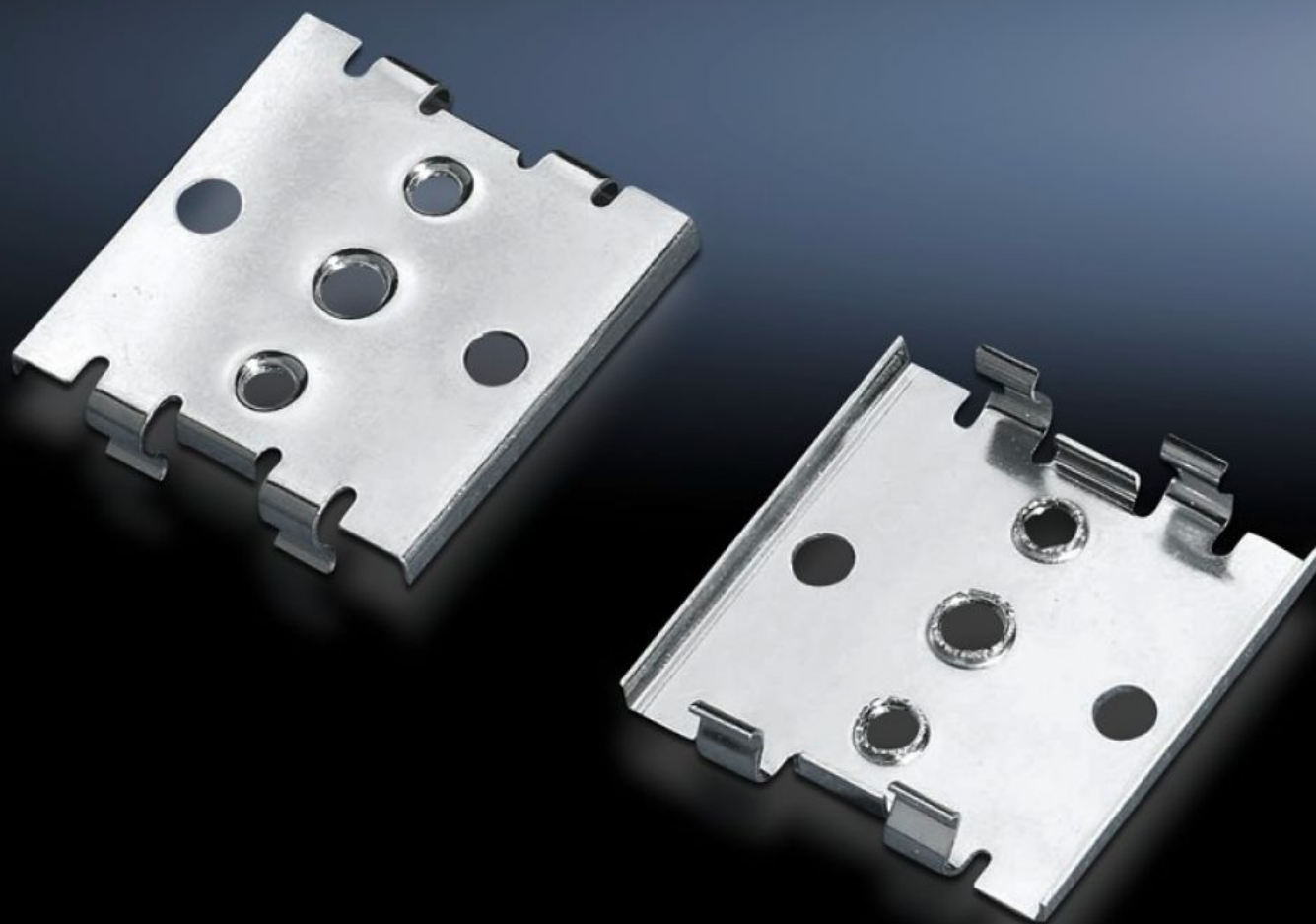


Rittal – The System.

Faster – better – everywhere.



SZ 2309.000 Mounting clip

State: 24/08/2025 (Source: [rittal.com/nz-en](https://www.rittal.com/nz-en))

ENCLOSURES

POWER DISTRIBUTION

CLIMATE CONTROL

IT INFRASTRUCTURE

SOFTWARE & SERVICES

FRIEDHELM LOH GROUP



SZ 2309.000 - Mounting clip for support rails

For fast, secure attachment of cable ducts, mounting plates, mounting angles on support rail 35/7.5 and 35/15 to EN 60 715.

Features

| | |
|-------------------------------|---|
| Model No. | SZ 2309.000 |
| Product description | For fast, secure attachment of cable ducts, mounting plates, mounting angles on support rail 35/7.5 and 35/15 to EN 60 715. |
| Benefits | Simply pre-assemble the mounting clip on the part to be installed, then snap into position on the support rail. |
| Material | Spring plate |
| Packs of | 30 pc(s). |
| Net weight | 0.18 |
| Gross weight | 0.196 |
| PCF per pack (cradle-to-gate) | 0.8 kg CO2 eq (Cat B) |
| Note on PCF category | Category B: PCF value (cradle-to-gate) based on the product weight, approximately calculated and self-declared |
| Customs tariff number | 39269097 |
| EAN | 4028177020887 |
| ETIM 9 | EC002625 |
| ETIM 8 | EC002625 |
| ECLASS 8.0 | 27189234 |