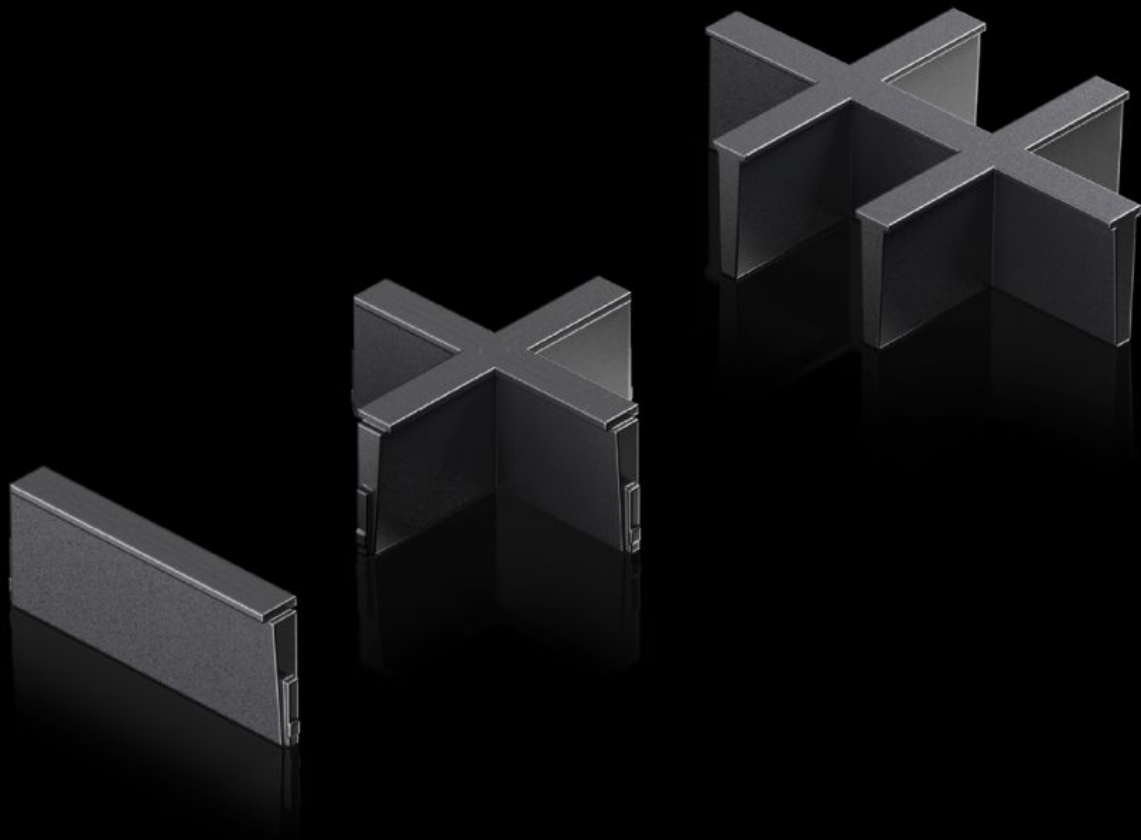


Rittal – The System.

Faster – better – everywhere.



AX 2582.200

Inlay

State: 2/04/2026 (Source: rittal.com/nz-en)

ENCLOSURES

POWER DISTRIBUTION

CLIMATE CONTROL

IT INFRASTRUCTURE

SOFTWARE & SERVICES

FRIEDHELM LOH GROUP



AX 2582.200 - Inlay For plastic gland plate, modular and sealing frame, modular

Individual inserts to subdivide the cut-outs in the modular plastic gland plate and the modular sealing frame.

Features

Model No.	AX 2582.200
Design	2 slots
Product description	Individual inserts to subdivide the cut-outs in the modular plastic gland plate and the modular sealing frame.
Material	Plastic
Colour	Black
Packs of	5 pc(s).
Net weight	0.015 kg
Gross weight	0.023 kg
Customs tariff number	40091200
ETIM 9	EC000211
ETIM 8	EC000211
ECLASS 8.0	27142421
Product description	SZ Inlay, for cable entry, modular, design: 2 slots

Approvals

Approvals	UR + C-UR (recognized)
-----------	------------------------