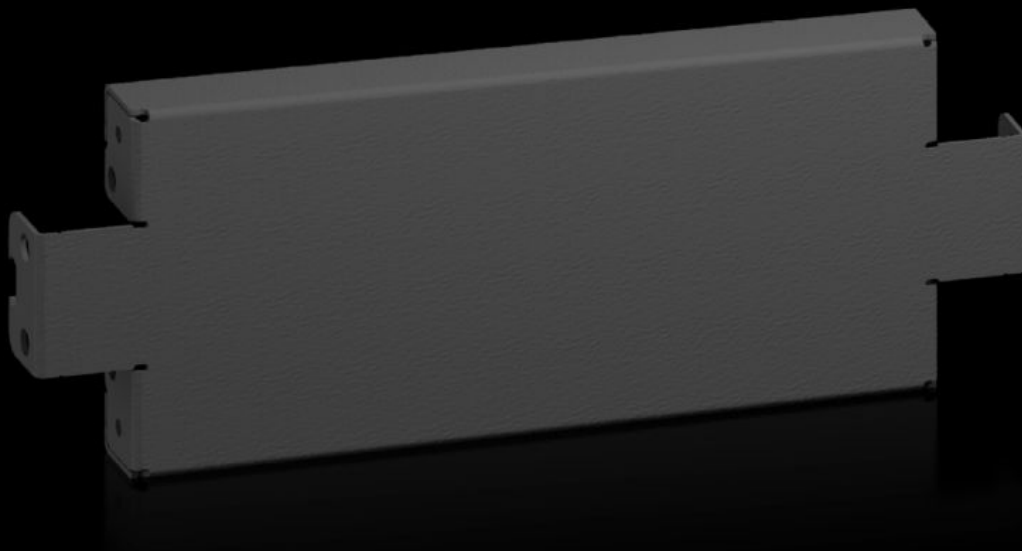


**Rittal – The System.**

Faster – better – everywhere.



**AX 2820.410**

**Base/plinth trim panels, side, 100 mm**

State: 5/04/2026 (Source: [rittal.com/nz-en](http://rittal.com/nz-en))

ENCLOSURES

POWER DISTRIBUTION

CLIMATE CONTROL

IT INFRASTRUCTURE

SOFTWARE & SERVICES

FRIEDHELM LOH GROUP



# AX 2820.410 - Base/plinth trim panels, side, 100 mm for AX

To finish off a base/plinth unit at the sides and for additional stabilisation or for the interior configuration of bayed base/plinths. One 200 mm high or two 100 mm high trim panels may optionally be fitted on 200 mm high base/plinths.

## Features

|                       |  |
|-----------------------|--|
| Model No.             | AX 2820.410  |
| Product description   | To finish off a base/plinth unit at the sides and for additional stabilisation or for the interior configuration of bayed base/plinths. One 200 mm high or two 100 mm high trim panels may optionally be fitted on 200 mm high base/plinths. |
| Material              | Sheet steel  |
| Colour                | RAL 9005   |
| Supply includes       | Assembly parts   |
| Note                  | Components from the 1st generation base/plinth system cannot be combined with components from the 2nd generation base/plinth system  |
| Dimensions            | Height: 100 mm   |
| To fit                | Enclosure type: AX<br>Depth: = 400 mm  |
| Type rating to UL 50E | Type 1<br>Type 3R<br>Type 4<br>Type 12   |
| Packs of              | 2 pc(s).   |
| Net weight            | 1.04 kg  |
| Gross weight          | 1.054 kg   |
| Customs tariff number | 94039910   |
| ETIM 9                | EC000721   |

# Features

---

|                     |   |
|---------------------|---|
| ETIM 8              | EC000721  |
| ECLASS 8.0          | 27182003  |
| Product description | AX Base/plinth trim panels, sides, H: 100 mm, for D: 400 mm |

---

# Approvals

---

|           |                  |
|-----------|------------------|
| Approvals | UL + C-UL - FTTA |
|-----------|------------------|

---