

# Rittal – The System.

Faster – better – everywhere.



## SK 3237.300 Blue e+ outlet filter

State: 14/08/2025 (Source: [rittal.com/nz-en](https://www.rittal.com/nz-en))

ENCLOSURES

POWER DISTRIBUTION

CLIMATE CONTROL

IT INFRASTRUCTURE

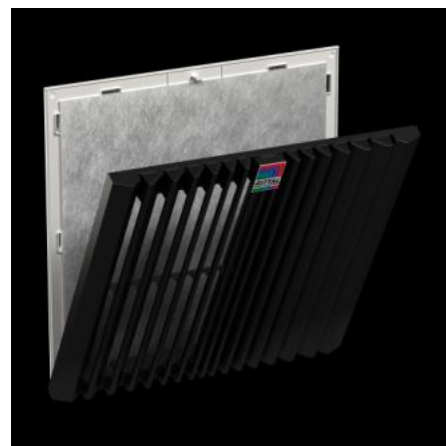
SOFTWARE & SERVICES

FRIEDHELM LOH GROUP



# SK 3237.300 - Blue e+ outlet filter

The outlet filter is used in conjunction with the corresponding fan-and-filter unit to dissipate heat loss from enclosures, ventilate the enclosure and protect temperature-sensitive components. This is achieved through the direct infeed of ambient air, the temperature of which must be lower than the permissible internal temperature of the enclosure.



## Features

Model No.	SK 3237.300
Design	wall-mounted
Benefits	Easy filter changes, thanks to a new opening mechanism on the louvred grille Faster installation on the enclosure with optimised detent hooks Tool-free assembly
Material	Plastic
Colour	RAL 7035
Supply includes	Outlet filter Chopped-fibre filter mat
Mounting cut-out	Cut-out width: 92 mm Cut-out height: 92 mm
To fit Model No.	SK 3237.7xx
Dimensions	Width: 116.5 mm Height: 116.5 mm Depth: 33.2 mm

# Features

Protection category NEMA	Type 12 with chopped-fibre filter Type 3, 3R with chopped-fibre filter and hose-proof hood
IP protection category to IEC 60529	IP 54 with chopped-fibre filter IP 56 with chopped-fibre filter and hose-proof hood
Packs of	1 pc(s).
Net weight	0.12
Gross weight	0.155
Customs tariff number	39269097
EAN	4028177998438
ETIM 9	EC002513
ETIM 8	EC002513
ECLASS 8.0	27180706

# Approvals

Approvals	UL + C-UL - FTTA UR + C-UR (recognized)
-----------	--