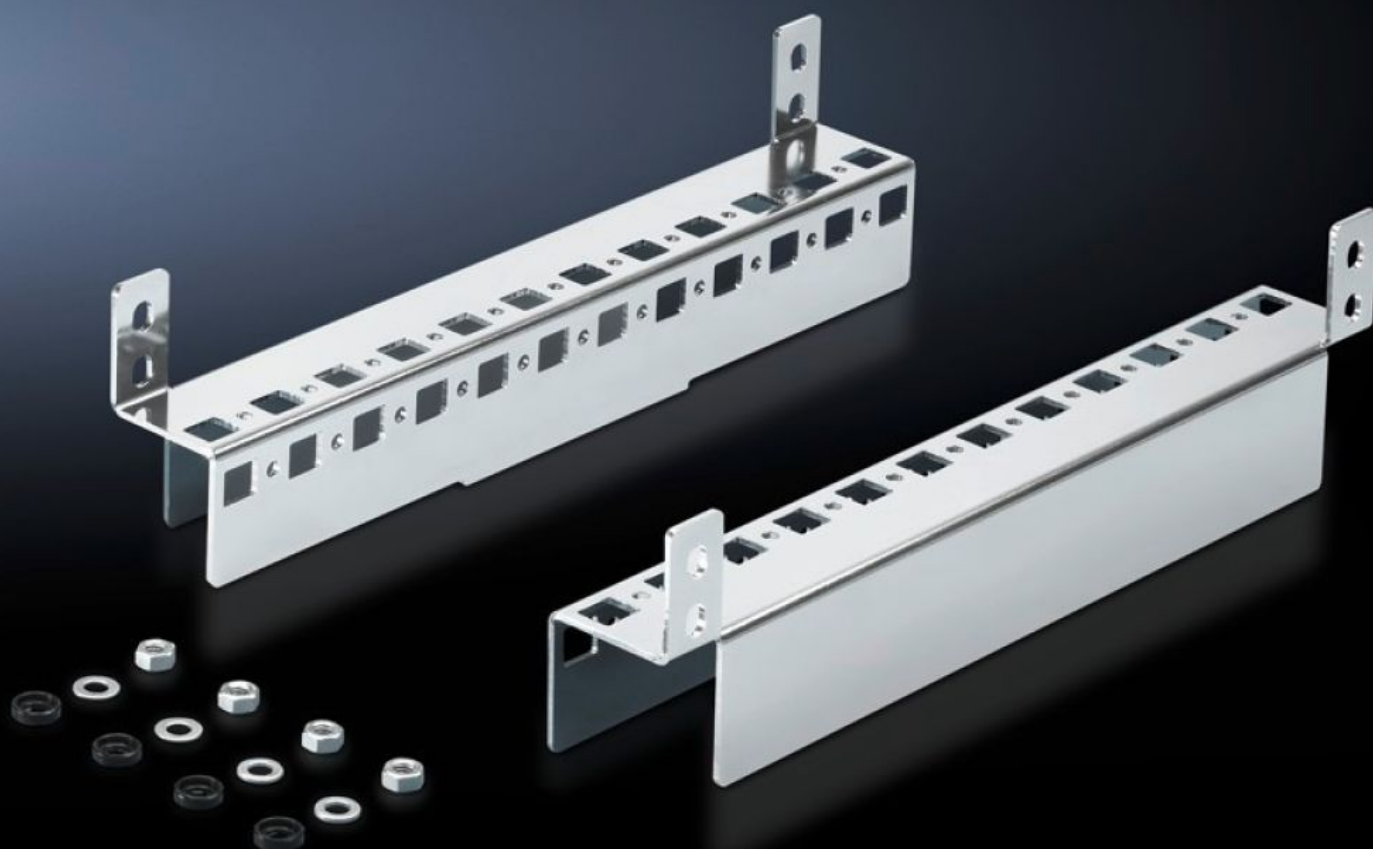


Rittal – The System.

Faster – better – everywhere.



CM 5001.370

Base configuration rail

State: 16/07/2025 (Source: rittal.com/nz-en)

ENCLOSURES

POWER DISTRIBUTION

CLIMATE CONTROL

IT INFRASTRUCTURE

SOFTWARE & SERVICES

FRIEDHELM LOH GROUP



CM 5001.370 - Base configuration rail for TP

For mounting in the enclosure depth, on the existing threaded bolts, no machining required. System punchings on 2 sides. Creates additional installation options.



Features

Model No.	CM 5001.370
Product description	For mounting in the enclosure depth, on the existing threaded bolts, no machining required. System punchings on 2 sides. Creates additional installation options.
Material	Sheet steel
Surface finish	Zinc-plated
Supply includes	Assembly parts
To fit	Enclosure type: TP Depth: = 400 mm
Packs of	2 pc(s).
Net weight	1
Gross weight	1.075
PCF per pack (cradle-to-gate)	4.1 kg CO2 eq (Cat B)
Note on PCF category	Category B: PCF value (cradle-to-gate) based on the product weight, approximately calculated and self-declared
Customs tariff number	73269098
EAN	4028177620599
ETIM 9	EC002625

Features

ETIM 8	EC002625
ECLASS 8.0	27189234