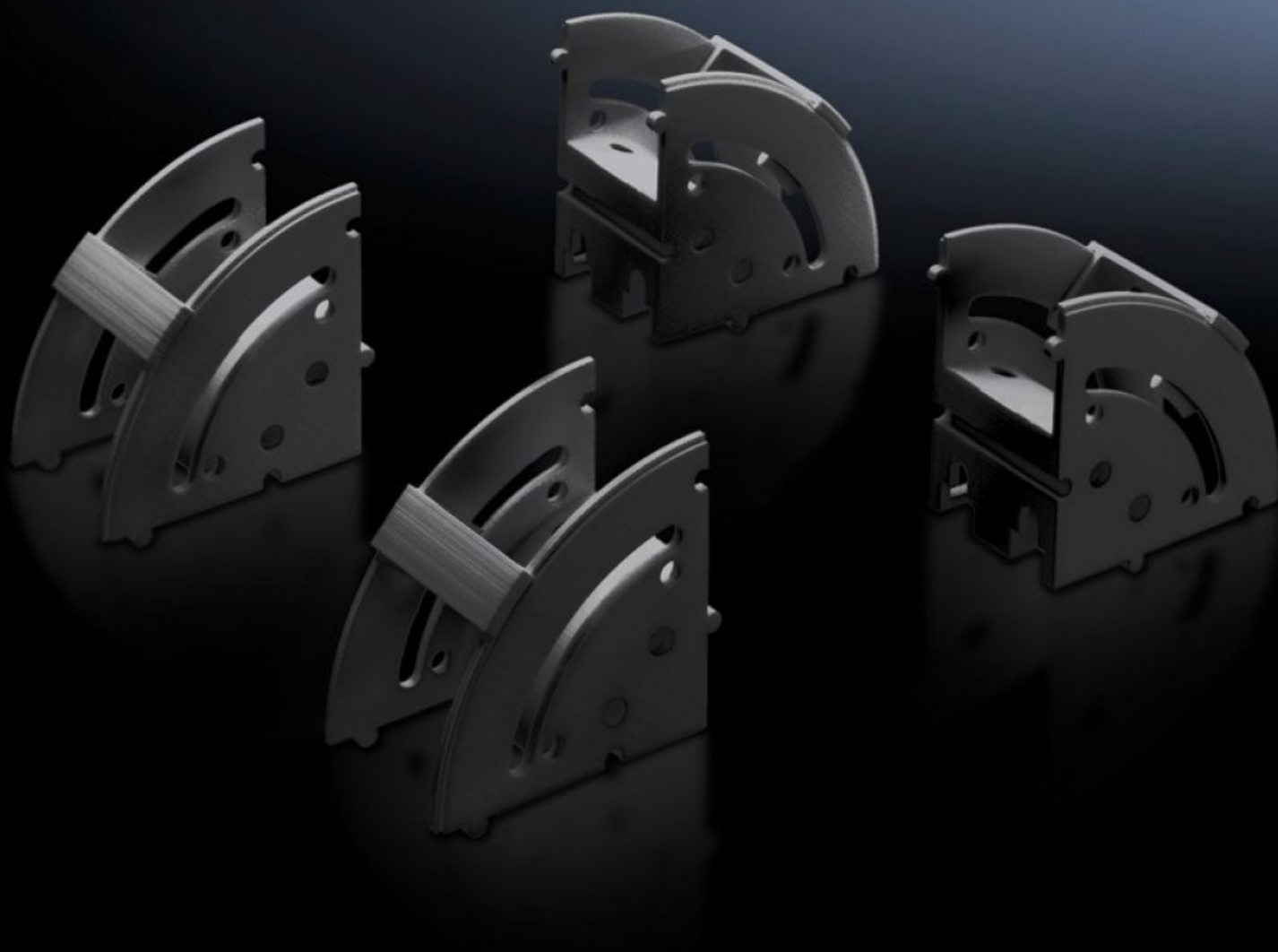


Rittal – The System.

Faster – better – everywhere.



DK 5502.405 Cable manager

State: 26/08/2025 (Source: rittal.com/nz-en)

ENCLOSURES

POWER DISTRIBUTION

CLIMATE CONTROL

IT INFRASTRUCTURE

SOFTWARE & SERVICES

FRIEDHELM LOH GROUP



DK 5502.405 - Cable manager

For system-compatible cable deflection and to accommodate surplus cables and excess length, the elements may optionally be used individually or in combination for cable routing.



Features

Model No.	DK 5502.405
Design	Tool-free assembly
Product description	For system-compatible cable deflection while complying with minimal bending radii and to accommodate surplus cables and excess length. The elements may optionally be used individually or in combination for cable routing. They may be combined into semi-circular or circular elements.
Benefits	Simple assembly with tool-free quick-release fastening Alternatively suitable for screw-fastening Integral multifunctional punching for attaching cable routing components Integral mounting holes for fixing the PDUs in a 7 U pitch pattern via a keyhole recess
Applications	For vertical cable routing and strain relief with network and server applications
Material	Plastic to UL 94-V0
Colour	RAL 9005
Supply includes	Mounting clips and assembly parts
Packs of	20 pc(s).

Features

Net weight	1
Gross weight	1.187
Customs tariff number	39269097
EAN	4028177679405
E-Number Sweden	E7239794
ETIM 9	EC002624
ECLASS 8.0	27189265