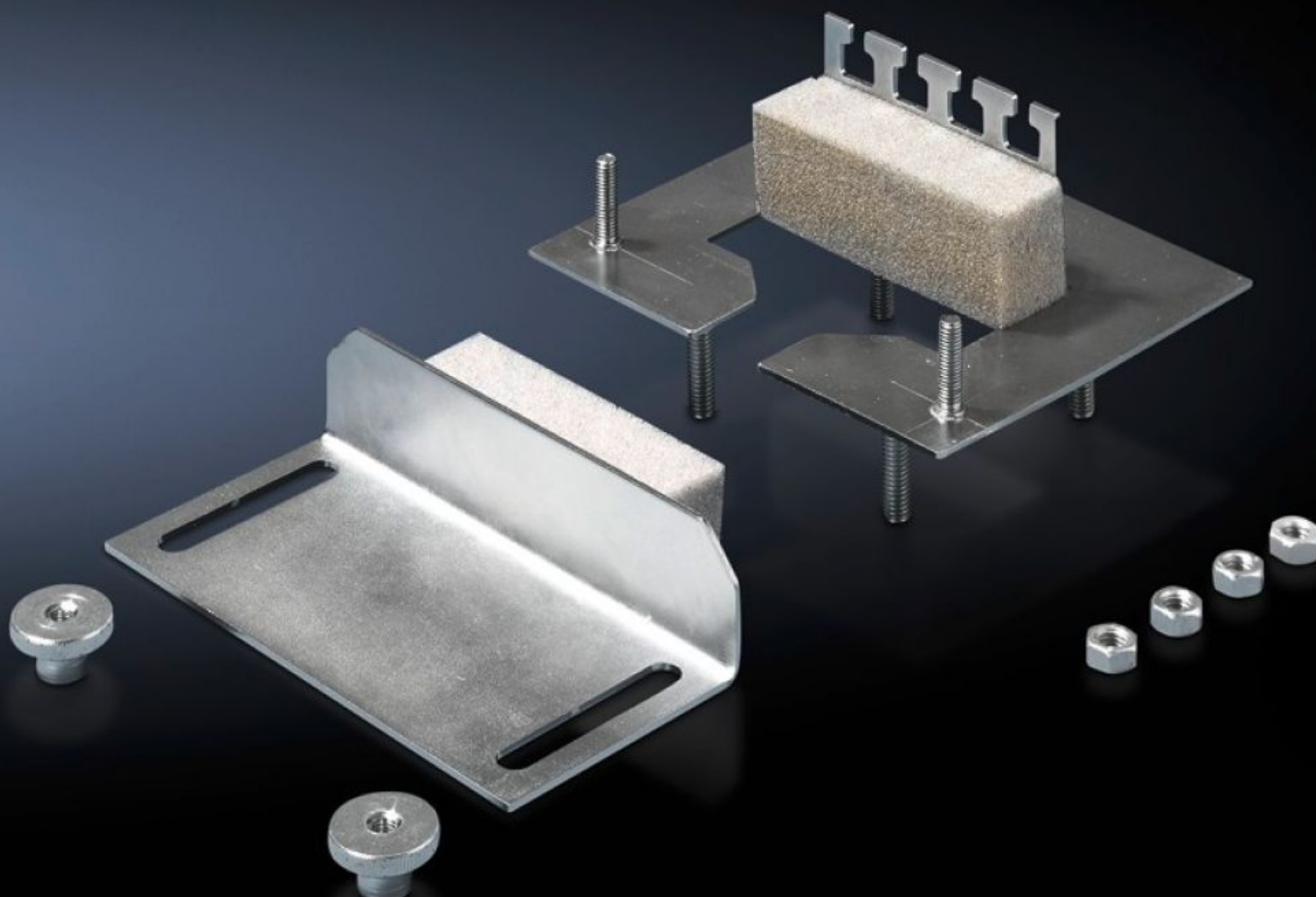


Rittal – The System.

Faster – better – everywhere.



CP 6052.500 Cable gland module

State: 10/09/2025 (Source: [rittal.com/nz-en](https://www.rittal.com/nz-en))

ENCLOSURES

POWER DISTRIBUTION

CLIMATE CONTROL

IT INFRASTRUCTURE

SOFTWARE & SERVICES

FRIEDHELM LOH GROUP



CP 6052.500 - Cable gland module for support arm connection Ø 130 mm

Use of the mounting cut-out for support arm connection Ø 130 mm, round, with enclosures mounted on the wall, for sealed cable entry. May also be mounted retrospectively with the cables already inserted. Fitted with T-heads for cable clamping. Particularly well-suited to cables with identical crosssections.



Features

| | |
|-------------------------------------|---|
| Model No. | CP 6052.500 |
| Product description | Use of the mounting cut-out for support arm connection Ø 130 mm, round, with enclosures mounted on the wall, for sealed cable entry. May also be mounted retrospectively with the cables already inserted. Fitted with T-heads for cable clamping. Particularly well-suited to cables with identical crosssections. |
| Benefits | May also be mounted retrospectively with the cables already inserted. Particularly well-suited to cables with identical cross-sections with T-heads for cable clamping |
| Material | Sheet steel |
| Surface finish | Zinc-plated |
| Supply includes | Assembly parts |
| IP protection category to IEC 60529 | IP 55 with correct installation and cable entry |
| Packs of | 1 pc(s). |
| Net weight | 0.32 |

Features

| | |
|-------------------------------|--|
| Gross weight | 0.341 |
| PCF per pack (cradle-to-gate) | 1.3 kg CO2 eq (Cat B) |
| Note on PCF category | Category B: PCF value (cradle-to-gate) based on the product weight, approximately calculated and self-declared |
| Customs tariff number | 73269098 |
| EAN | 4028177305786 |
| ETIM 9 | EC000879 |
| ECLASS 8.0 | 27069216 |