

Rittal – The System.

Faster – better – everywhere.



CP 6372.542 Comfort Panel

State: 30/08/2025 (Source: rittal.com/nz-en)

ENCLOSURES

POWER DISTRIBUTION

CLIMATE CONTROL

IT INFRASTRUCTURE

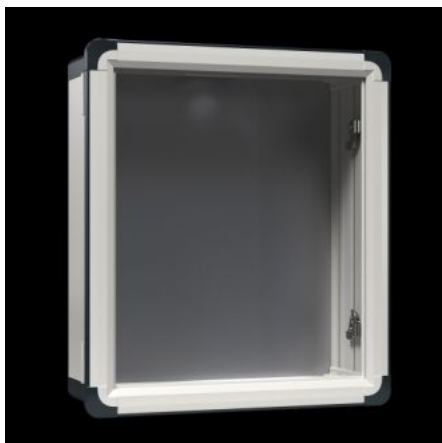
SOFTWARE & SERVICES

FRIEDHELM LOH GROUP



CP 6372.542 - Comfort Panel

Aluminium enclosure, high thermal conductivity for optimum passive heat dissipation. Low weight coupled with high stability. Protection category IP 65 to IEC 60 529.



Features

Model No.	CP 6372.542
Design	Support arm connection Ø 130 mm
Benefits	Aluminium enclosure, high thermal conductivity for optimum passive heat dissipation. Low weight coupled with high stability Compatible with all Rittal stand and support arm systems
Material	Enclosure: Extruded aluminium section Corner pieces: Die-cast zinc Corner protectors: Plastic
General colour	Natural anodised
Colour	Enclosure: Natural anodised Corner pieces: RAL 7035 Corner protectors: similar to RAL 7024
Supply includes	Enclosure with cut-out for support arm connection 3 mm double-bit lock insert may be exchanged for 41 mm lock inserts, plastic handles and T handles, type C Seals and assembly parts for front panels Hinged rear panel, hinging on the longest side

Features

Dimensions	Width: 628.5 mm Height: 508.5 mm Depth: 170 mm
Installation depth	152 mm
IP protection category to IEC 60529	IP 65
Protection category NEMA	NEMA 12
To fit front panel width	520 mm
To fit front panel height	400 mm
Design	Servicing access from the rear
Note	The support arm connection may be swapped over by rotating the enclosure
Basic material	Aluminium
Lock	Lock version: Cam Number of locks: 2 Lock insert: 3 mm double-bit
Packs of	1 pc(s).
Net weight	12.678
Gross weight	13.345
EAN	4028177663077
ETIM 9	EC002504
ECLASS 8.0	27180505

Approvals

Approvals	UL + C-UL (listed)
Explanations	Declaration of conformity Declaration of conformity UK