

# Rittal – The System.

Faster – better – everywhere.



## CP 6372.552 Comfort Panel

State: 23/05/2026 (Source: [rittal.com/nz-en](http://rittal.com/nz-en))

ENCLOSURES

POWER DISTRIBUTION

CLIMATE CONTROL

IT INFRASTRUCTURE

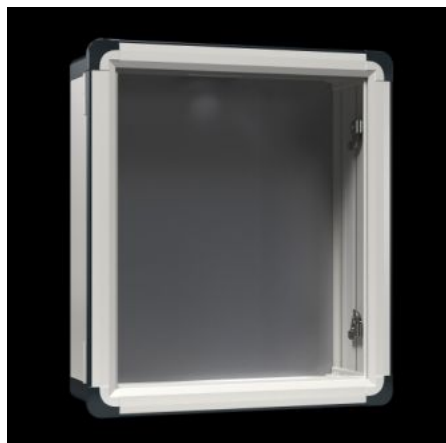
SOFTWARE & SERVICES

FRIEDHELM LOH GROUP



# CP 6372.552 - Comfort Panel

Aluminium enclosure, high thermal conductivity for optimum passive heat dissipation. Low weight coupled with high stability. Protection category IP 65 to IEC 60 529.



## Features

|                 |  |
|-----------------|--|
| Model No.       | CP 6372.552  |
| Design          | Support arm connection Ø 130 mm  |
| Benefits        | Aluminium enclosure, high thermal conductivity for optimum passive heat dissipation.<br>Low weight coupled with high stability<br>Compatible with all Rittal stand and support arm systems   |
| Material        | Enclosure: Extruded aluminium section<br>Corner pieces: Die-cast zinc<br>Corner protectors: Plastic  |
| General colour  | Natural anodised   |
| Colour          | Enclosure: Natural anodised<br>Corner pieces: RAL 7035<br>Corner protectors: similar to RAL 7024   |
| Supply includes | Enclosure with cut-out for support arm connection<br>3 mm double-bit lock insert may be exchanged for 41 mm lock inserts, plastic handles and T handles, type C<br>Seals and assembly parts for front panels<br>Hinged rear panel, hinging on the longest side |

# Features

|                                     |  |
|-------------------------------------|--|
| Dimensions                          | Width: 628.5 mm<br>Height: 608.5 mm<br>Depth: 170 mm   |
| Installation depth                  | 152 mm   |
| IP protection category to IEC 60529 | IP 65  |
| Protection category NEMA            | NEMA 12  |
| To fit front panel width            | 520 mm   |
| To fit front panel height           | 500 mm   |
| Design                              | Servicing access from the rear   |
| Note                                | The support arm connection may be swapped over by rotating the enclosure   |
| Basic material                      | Aluminium  |
| Lock                                | Lock version: Cam<br>Number of locks: 2<br>Lock insert: 3 mm double-bit  |
| Packs of                            | 1 pc(s).   |
| Net weight                          | 14.375 kg  |
| Gross weight                        | 17.375 kg  |
| Customs tariff number               | 94032080   |
| ETIM 9                              | EC002504   |
| ECLASS 8.0                          | 27180505   |
| Product description                 | CP Compact Panel, for front panel BH 520x500 mm, installation depth 152 mm, Extruded aluminum section, Support arm connection Ø 130 mm, Hinged rear panel with cam |

# Approvals

|           |                    |
|-----------|--------------------|
| Approvals | UL + C-UL (listed) |
|-----------|--------------------|

# Approvals

---

Explanations

Declaration of conformity

Declaration of conformity UK