

**Rittal – The System.**

Faster – better – everywhere.



**IW 6902.640**

**Enclosure attachment, tilting, base mounting**

State: 29/05/2026 (Source: [rittal.com/nz-en](http://rittal.com/nz-en))



ENCLOSURES

POWER DISTRIBUTION

CLIMATE CONTROL

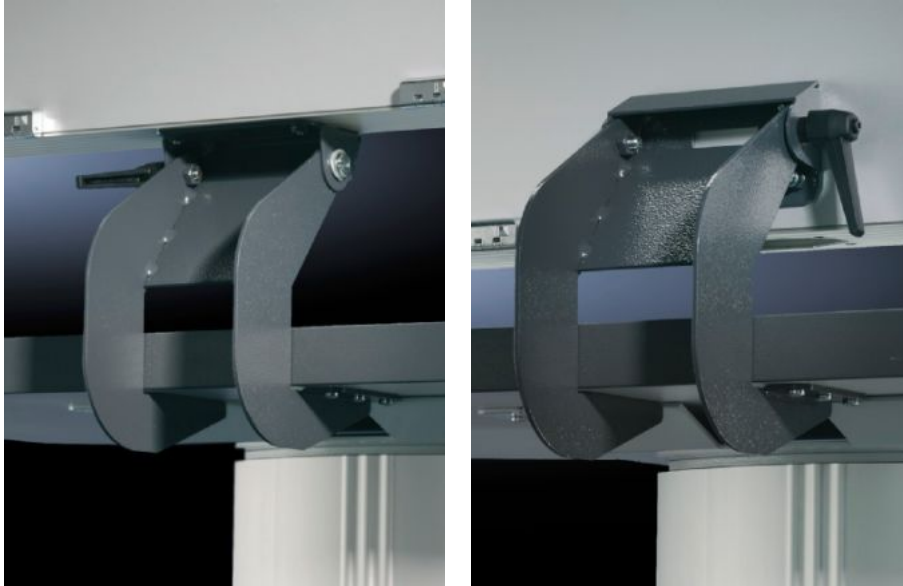
IT INFRASTRUCTURE

SOFTWARE & SERVICES

FRIEDHELM LOH GROUP

# IW 6902.640 - Enclosure attachment, tilting, base mounting CP-L, square 120 x 65 mm

The enclosure attachment can be mounted either on the support arm connection of the Optipanel enclosure or on the underside or rear of any enclosure.



## Features

|                     |   |
|---------------------|---|
| Model No.           | IW 6902.640   |
| Product description | With mounting cut-out for connector grommet for sealed cable entry.   |
| Material            | Sheet steel   |
| Surface finish      | Spray-finished  |
| Colour              | RAL 7024  |
| Supply includes     | Assembly parts  |
| Note                | The enclosure attachment can be mounted either on the support arm connection of the Optipanel enclosure or on the underside or rear of any enclosure. |
| OUT_TILT_ANGLE      | -40 - 40 °  |
| Packs of            | 1 pc(s).  |
| Net weight          | 1.654 kg  |

# Features

---

|                       |          |
|-----------------------|----------|
| Gross weight          | 1.854 kg |
| Customs tariff number | 73269098 |
| ECLASS 8.0            | 27400557 |

---