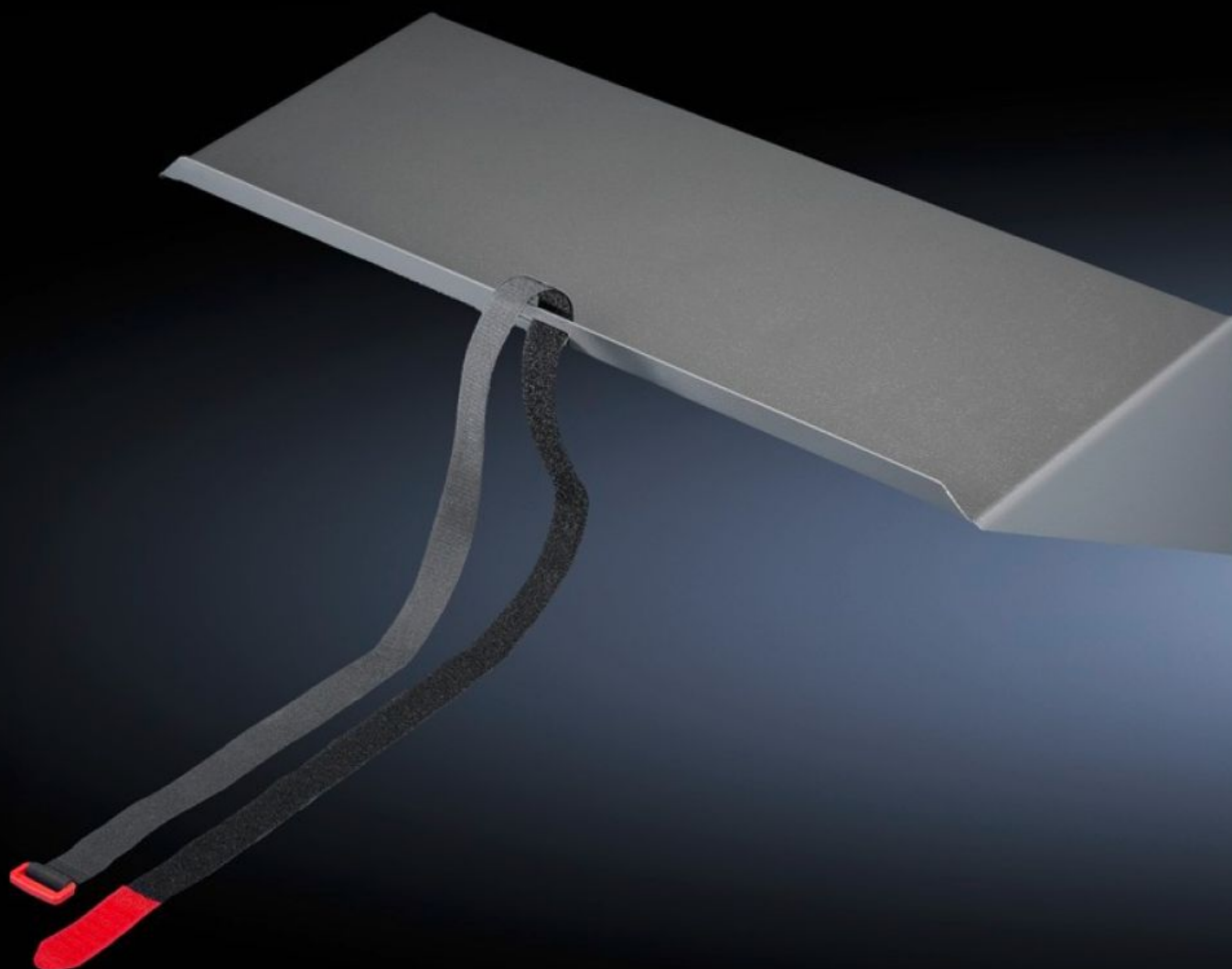


# Rittal – The System.

Faster – better – everywhere.



## IW 6902.950 Base

State: 22/05/2024 (Source: [rittal.com/nz-en](http://rittal.com/nz-en))

ENCLOSURES

POWER DISTRIBUTION

CLIMATE CONTROL

IT INFRASTRUCTURE

SOFTWARE & SERVICES

FRIEDHELM LOH GROUP



# IW 6902.950 - Base for tubular door frame

The space-saving alternative to component shelves for accommodating tower PCs (maximum 20 kg). For screw-fastening to the tubular door frame of 600 mm wide enclosures.

## Features

Model No.	IW 6902.950
Product description	The space-saving alternative to component shelves for accommodating tower PCs (maximum 20 kg). For screw-fastening to the tubular door frame of 600 mm wide enclosures.
Material	Sheet steel
Surface finish	Spray-finished
Colour	RAL 7015
Supply includes	Retaining strap Assembly parts
Dimensions	Width: 445 mm Height: 159 mm Depth: 230 mm
Load capacity	20 kg
Packs of	1 pc(s).
Weight/pack	4.3 kg
Customs tariff number	94039910
EAN	4028177438729
ETIM 7.0	EC002620
ECLASS 8.0	27189261