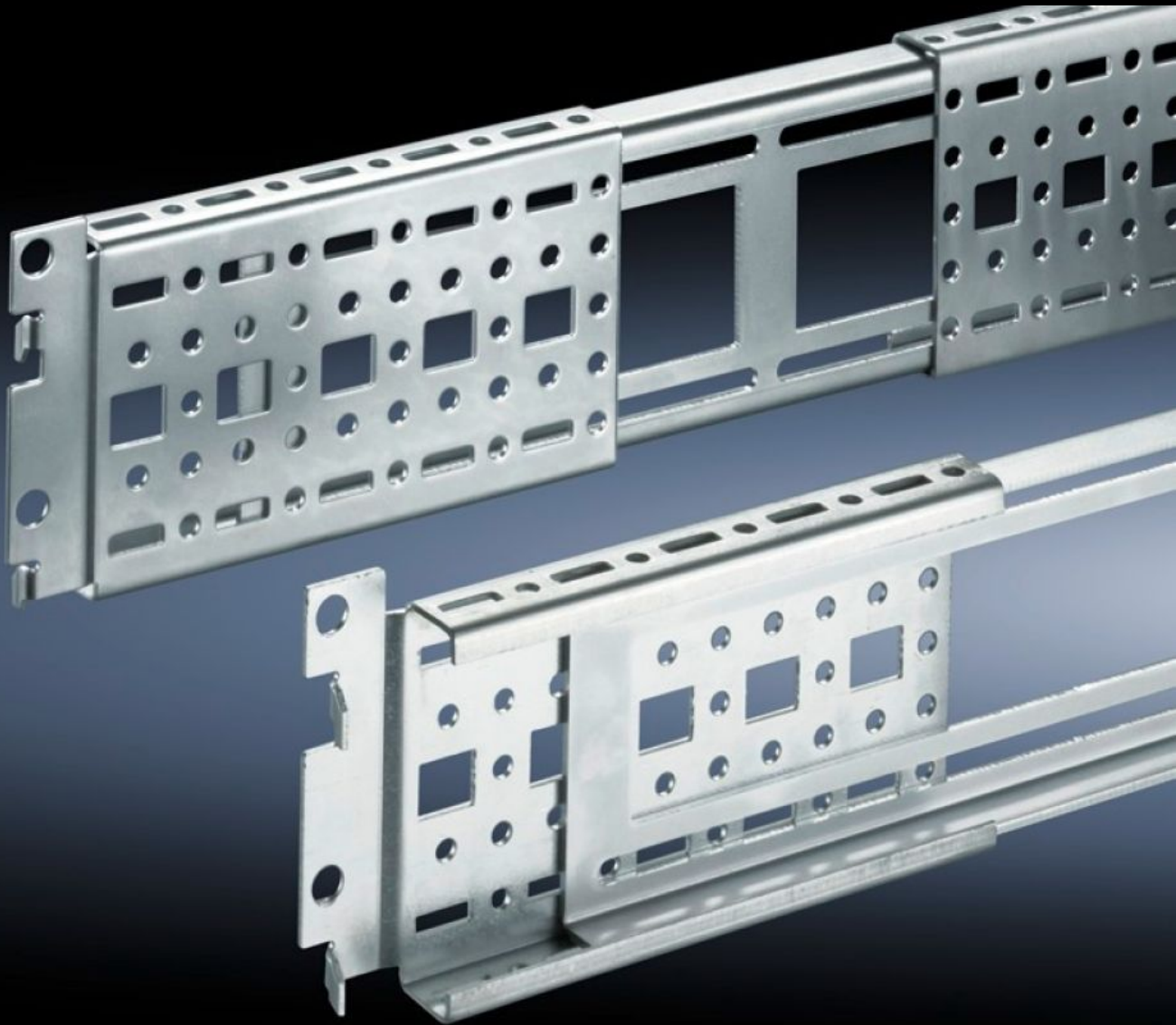


Rittal – The System.

Faster – better – everywhere.



DK 7000.678

**Punched section with mounting
flange, 17 x 73 mm, depth-variable
for mounting frame**

State: 20/05/2025 (Source: rittal.com/nz-en)

ENCLOSURES

POWER DISTRIBUTION

CLIMATE CONTROL

IT INFRASTRUCTURE

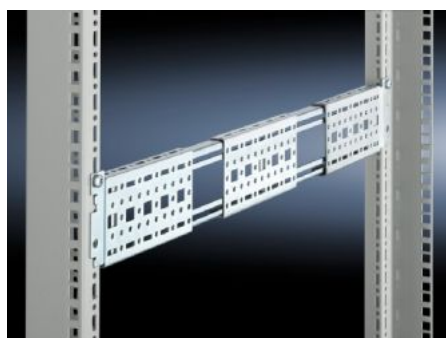
SOFTWARE & SERVICES

FRIEDHELM LOH GROUP



DK 7000.678 - Punched section with mounting flange, 17 x 73 mm, depth-variable for mounting frame for TS, TE, TX CableNet

For flexible interior installation, and/or to accommodate additional built-in components. The punched sections with mounting flanges may be located in the enclosure depth between two mounting frames.



Features

Model No.	DK 7000.678
Product description	Punched sections with mounting flanges may be suspended between two mounting frames with a 482.6 mm (19") distance between levels of 650-820 mm. An additional screw fastening secures the unit.
Material	Sheet steel
Surface finish	Zinc-plated
Supply includes	Assembly screws
To fit	for TS, TE, TX CableNet
Length	530: 700 mm
Packs of	2 pc(s).
Net weight	1.64
Gross weight	1.84
Customs tariff number	73269098
EAN	4028177435551

Features

ETIM 9	EC002625
ECLASS 8.0	27189234

Tender text

Flexible punched section, 530 - 700 mm

2 x variable punched section, each fitted with a
movable centre piece, includes assembly parts.
Distance between 19" levels (mm): 650 - 820 mm

Material: Sheet steel, zinc-plated, passivated